

Anti-Cullin 1/Cul1 Antibody

Catalog Number: PA1557

About CUL1

Cullin 1, also known as CUL1, is a human protein and gene from cullin family. This protein plays an important role in protein degradation and protein ubiquitination. This is an essential component of the SCF (SKP1-CUL1-F-box protein) E3 ubiquitin ligase complex, which mediates the ubiquitination of proteins involved in cell cycle progression, signal transduction and transcription. Human cullin 1, but not the other closely related cullins 2, 3, 4A, and 5, selectively interacts with human SKP1.

Overview

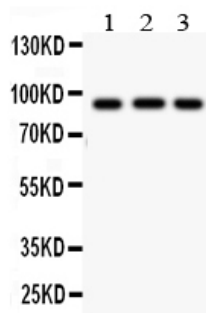
Product Name	Anti-Cullin 1/Cul1 Antibody
Reactive Species	Human, Mouse, Rat
Description	Boster Bio Anti-Cullin 1/Cul1 Antibody catalog # PA1557. Tested in IHC, WB applications. This antibody reacts with Human, Mouse, Rat.
Application	IHC, WB
Clonality	Polyclonal
Formulation	Each vial contains 5mg BSA, 0.9mg NaCl, 0.2mg Na2HPO4, 0.05mg Thimerosal, 0.05mg NaN3.
Storage Instructions	Store at -20°C for one year from date of receipt. After reconstitution, at 4°C for one month. It can also be aliquotted and stored frozen at -20°C for six months. Avoid repeated freeze-thaw cycles.
Host	Rabbit
Uniprot ID	Q13616

Technical Details

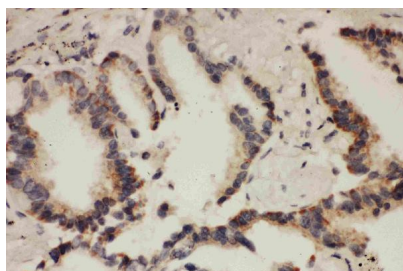
Immunogen	A synthetic peptide corresponding to a sequence at the N-terminus of human Cullin 1, identical to the related mouse and rat sequences.
Predicted Reactive Species	Hamster
Recommended Detection Systems	Boster recommends Enhanced Chemiluminescent Kit with anti-Rabbit IgG (EK1002) for Western blot, and HRP Conjugated anti-Rabbit IgG Super Vision Assay Kit (SV0002-1) for IHC(P).
Cross Reactivity	No cross-reactivity with other proteins
Isotype	Rabbit IgG
Form	Lyophilized
Concentration	Adding 0.2 ml of distilled water will yield a concentration of 500 ug/ml.

Purification	Immunogen affinity purified.
Suggested Dilutions	<p>Dilute the sample so that the expected range of concentrations fall within the detection range of this kit.</p> <p>If the expected range of concentration is unknown, a pilot test should be conducted to decide the optimal dilution ratio for your samples.</p> <p>Some PubMed article(s) citing the expression level of this target are as follows:</p> <p>Boster Bio's internal QC testing used:</p> <p>Immunohistochemistry (Paraffin-embedded Section), 0.5-1ug/ml, Human, Mouse, Rat, By Heat</p> <p>Western blot, 0.1-0.5ug/ml, Human, Mouse, Rat</p>

Anti-Cullin 1/Cul1 Antibody (PA1557) Images



Anti-Cullin 1 antibody, PA1557, Western blotting
All lanes: Anti Cullin 1 (PA1557) at 0.5ug/ml
Lane 1: MM453 Whole Cell Lysate at 40ug
Lane 2: HT1080 Whole Cell Lysate at 40ug
Lane 3: SMMC Whole Cell Lysate at 40ug
Predicted bind size: 90 KD
Observed bind size: 90 KD



Anti-Cullin 1 antibody, PA1557, IHC(P)
IHC(P): Human Lung Cancer Tissue

Submit a product review to Biocompare.com

Submit a review of this product to Biocompare.com to receive a \$20 Amazon.com giftcard! Your reviews help your fellow scientists make the right decisions. Thank you for your contribution.



Anti-Cullin 1/Cul1 Antibody