

Anti-Transcription factor E2F1 E2F1 Antibody

Catalog Number: PA1560

About E2F1

Transcription factor E2F1 is a protein that in humans is encoded by the E2F1 gene. The protein encoded by this gene is a member of the E2F family of transcription factors. The E2F family of transcription factors appears to play a critical role in the transcription of certain genes required for cell cycle progression. E2F1, the first cloned member of this family, is regulated during the cell cycle at the mRNA level by changes in transcription of the E2F1 gene and at the protein level by complex formation with proteins such as the retinoblastoma gene product (pRB), cyclin A and DP1. E2F1 can override a pRB-induced G1/S block and can behave as an oncogene in certain cells. E2F1 was cloned and was found to contain seven exons. Fluorescence in situ hybridization localized E2F1 to chromosome 20q11. The E2F1 transcription factor can promote proliferation or apoptosis when activated, and is a key downstream target of the retinoblastoma tumour suppressor protein (pRB).

Overview

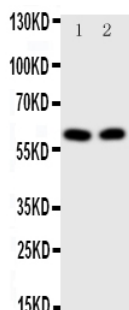
Product Name	Anti-Transcription factor E2F1 E2F1 Antibody
Reactive Species	Human, Mouse, Rat
Description	Boster Bio Anti-Transcription factor E2F1 E2F1 Antibody catalog # PA1560. Tested in WB applications. This antibody reacts with Human, Mouse, Rat.
Application	WB
Clonality	Polyclonal
Formulation	Each vial contains 4 mg Trehalose, 0.9 mg NaCl and 0.2mg Na ₂ HPO ₄ .
Storage Instructions	Store at -20°C for one year from date of receipt. After reconstitution, at 4°C for one month. It can also be aliquotted and stored frozen at -20°C for six months. Avoid repeated freeze-thaw cycles.
Host	Rabbit
Uniprot ID	Q01094

Technical Details

Immunogen	A synthetic peptide corresponding to a sequence in the middle region of human E2F1, identical to the related mouse and rat sequences.
Predicted Reactive Species	Hamster
Recommended Detection Systems	Boster recommends Enhanced Chemiluminescent Kit with anti-Rabbit IgG (EK1002) for Western blot.
Cross Reactivity	No cross-reactivity with other proteins
Isotype	Rabbit IgG

Form	Lyophilized
Concentration	Adding 0.2 ml of distilled water will yield a concentration of 500 ug/ml.
Purification	Immunogen affinity purified.
Suggested Dilutions	<p>Dilute the sample so that the expected range of concentrations fall within the detection range of this kit.</p> <p>If the expected range of concentration is unknown, a pilot test should be conducted to decide the optimal dilution ratio for your samples.</p> <p>Some PubMed article(s) citing the expression level of this target are as follows:</p> <p>Boster Bio's internal QC testing used:</p> <p>Western blot, 0.1-0.5ug/ml, Human , Mouse, Rat</p>

Anti-Transcription factor E2F1 E2F1 Antibody (PA1560) Images



Anti-E2F1 antibody, PA1560, Western blotting
All lanes: Anti E2F1 (PA1560) at 0.5ug/ml
Lane 1: HELA Whole Cell Lysate at 40ug
Lane 2: MCF-7 Whole Cell Lysate at 40ug
Predicted bind size: 47KD
Observed bind size: 60KD

4 Publications Citing This Product

1. PubMed ID: 20049626, Wang Py, Li Yj, Zhang S, Li Zl, Yue Z, Xie N, Xie Sy. Mol Cell Biochem. 2010 Jun;339(1-2):163-71. Doi: 10.1007/S11010-009-0380-2. Epub 2010 Jan 5. Regulating A549 Cells Growth By Aso Inhibiting Mirna Expression.
2. PubMed ID: 26378521, GCN5 Potentiates Glioma Proliferation and Invasion via STAT3 and AKT Signaling Pathways
3. PubMed ID: 25431082, Zhou R, Lu Z, Liu K, Guo J, Liu J, Zhou Y, Yang J, Mi M, Xu H. Curr Cancer Drug Targets. 2015;14(9):860-71. Platycodin D Induces Tumor Growth Arrest By Activating Foxo3A Expression In Prostate Cancer In Vitro And In Vivo.

Visit bosterbio.com/anti-e2f1-antibody-pa1560-boster.html to see all 4 publications.

Submit a product review to Biocompare.com

Submit a review of this product to Biocompare.com to receive a \$20 Amazon.com giftcard! Your reviews help your fellow scientists make the right decisions. Thank you for your contribution.



Anti-Transcription factor E2F1 E2F1 Antibody