

Anti-Leukemia inhibitory factor LIF Antibody

Catalog Number: PA1562

About Lif

LIF is a pleiotropic cytokine produced at the maternal-fetal interface which has been shown to play an essential role in implantation in mice. LIF is produced in high amounts by the human endometrium and the trophoblast itself, and LIF receptors are present on cytotrophoblast cells. LIF could, thus, play a role in modulating HLA-G production and immune tolerance at the maternal-fetal interface. The gene maps to 22q11-q12.2, between the Philadelphia translocation BCR gene and the breakpoint of the translocation in cell line GM2324 at 22q12.2.

Overview

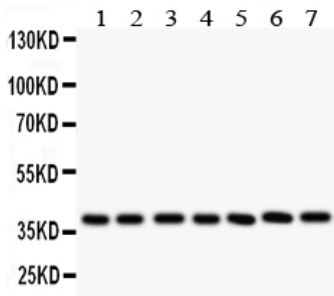
Product Name	Anti-Leukemia inhibitory factor LIF Antibody
Reactive Species	Mouse, Rat
Description	Boster Bio Anti-Leukemia inhibitory factor LIF Antibody catalog # PA1562. Tested in WB applications. This antibody reacts with Mouse, Rat.
Application	WB
Clonality	Polyclonal
Formulation	Each vial contains 5mg BSA, 0.9mg NaCl, 0.2mg Na2HPO4, 0.05mg Thimerosal, 0.05mg NaN3.
Storage Instructions	Store at -20°C for one year from date of receipt. After reconstitution, at 4°C for one month. It can also be aliquotted and stored frozen at -20°C for six months. Avoid repeated freeze-thaw cycles.
Host	Rabbit
Uniprot ID	P09056

Technical Details

Immunogen	A synthetic peptide corresponding to a sequence at the C-terminus of mouse LIF, identical to the related rat sequence.
Predicted Reactive Species	Hamster
Recommended Detection Systems	Boster recommends Enhanced Chemiluminescent Kit with anti-Rabbit IgG (EK1002) for Western blot.
Cross Reactivity	No cross-reactivity with other proteins
Isotype	Rabbit IgG
Form	Lyophilized
Concentration	Adding 0.2 ml of distilled water will yield a concentration of 500 ug/ml.

Purification	Immunogen affinity purified.
Suggested Dilutions	<p>Dilute the sample so that the expected range of concentrations fall within the detection range of this kit.</p> <p>If the expected range of concentration is unknown, a pilot test should be conducted to decide the optimal dilution ratio for your samples.</p> <p>Some PubMed article(s) citing the expression level of this target are as follows:</p> <p>Boster Bio's internal QC testing used:</p> <p>Western blot, 0.1-0.5ug/ml, Mouse, Rat</p>

Anti-Leukemia inhibitory factor LIF Antibody (PA1562) Images



Anti-LIF antibody, PA1562, Western blotting
All lanes: Anti LIF (PA1562) at 0.5ug/ml
Lane 1: Rat Intestine Tissue Lysate at 50ug
Lane 2: Rat Brain Tissue Lysate at 50ug
Lane 3: Rat Spleen Tissue Lysate at 50ug
Lane 4: Rat Thymus Tissue Lysate at 50ug
Lane 5: Mouse Brain Tissue Lysate at 50ug
Lane 6: Mouse Kidney Tissue Lysate at 50ug
Lane 7: Mouse Liver Tissue Lysate at 50ug
Predicted bind size: 22KD
Observed bind size: 40KD

7 Publications Citing This Product

1. PubMed ID: 17392578, Hu Cp, Feng Jt, Tang Yl, Zhu Jq, Lin Mj, Yu Me. Mediators Inflamm. 2006;2006(5):84829. Lif Upregulates Expression Of Nk-1R In Nhbe Cells.
2. PubMed ID: 28678802, miR-182 aids in receptive endometrium development in dairy goats by down-regulating PTN expression
3. PubMed ID: 27158401, MicroRNA-223-3p suppresses leukemia inhibitory factor expression and pinopodes formation during embryo implantation in mice

Visit bosterbio.com/anti-lif-antibody-pa1562-boster.html to see all 7 publications.

Submit a product review to Biocompare.com

Submit a review of this product to Biocompare.com to receive a \$20 Amazon.com giftcard! Your reviews help your fellow scientists make the right decisions. Thank you for your contribution.



Anti-Leukemia inhibitory factor LIF Antibody