

Anti-PAK1 Antibody

Catalog Number: PA1563

About PAK1

Serine/threonine-protein kinase PAK 1 is an enzyme that in humans is encoded by the PAK1 gene. PAK proteins are critical effectors that link RhoGTPases to cytoskeleton reorganization and nuclear signaling. PAK proteins, a family of serine/threonine p21-activated kinases, include PAK1, PAK2, PAK3 and PAK4. These proteins serve as targets for the small GTP binding proteins Cdc42 and Rac and have been implicated in a wide range of biological activities. PAK1 regulates cell motility and morphology. Alternative transcripts of this gene have been found, but their full-length natures have not yet been determined. The PAK1 gene is mapped to 11q13-q14 by inclusion within a mapped clone.

Overview

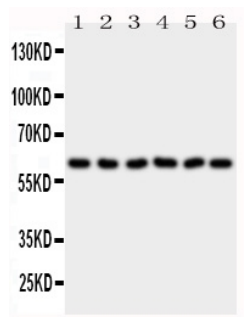
Product Name	Anti-PAK1 Antibody
Reactive Species	Human, Mouse, Rat
Description	Boster Bio Anti-PAK1 Antibody catalog # PA1563. Tested in WB applications. This antibody reacts with Human, Mouse, Rat.
Application	WB
Clonality	Polyclonal
Formulation	Each vial contains 5mg BSA, 0.9mg NaCl, 0.2mg Na ₂ HPO ₄ , 0.05mg Thimerosal, 0.05mg NaN ₃ .
Storage Instructions	Store at -20°C for one year from date of receipt. After reconstitution, at 4°C for one month. It can also be aliquotted and stored frozen at -20°C for six months. Avoid repeated freeze-thaw cycles.
Host	Rabbit
Uniprot ID	Q13153

Technical Details

Immunogen	A synthetic peptide corresponding to a sequence at the N-terminus of human PAK1, different from the related mouse and rat sequences by one amino acid.
Predicted Reactive Species	Hamster
Recommended Detection Systems	Boster recommends Enhanced Chemiluminescent Kit with anti-Rabbit IgG (EK1002) for Western blot.
Cross Reactivity	No cross-reactivity with other proteins
Isotype	Rabbit IgG
Form	Lyophilized
Concentration	Adding 0.2 ml of distilled water will yield a concentration of 500 ug/ml.

Purification	Immunogen affinity purified.
Suggested Dilutions	<p>Dilute the sample so that the expected range of concentrations fall within the detection range of this kit.</p> <p>If the expected range of concentration is unknown, a pilot test should be conducted to decide the optimal dilution ratio for your samples.</p> <p>Some PubMed article(s) citing the expression level of this target are as follows:</p> <p>Boster Bio's internal QC testing used:</p> <p>Western blot, 0.1-0.5ug/ml, Human, Rat, Mouse</p>

Anti-PAK1 Antibody (PA1563) Images



Anti-PAK1 antibody, PA1563, Western blotting

Lane 1: Rat Testis Tissue Lysate

Lane 2: Rat Spleen Tissue Lysate

Lane 3: SW620 Cell Lysate

Lane 4: MCF-7 Cell Lysate

Lane 5: CEM Cell Lysate

Lane 6: HT1080 Cell Lysate

Submit a product review to Biocompare.com

Submit a review of this product to Biocompare.com to receive a \$20 Amazon.com giftcard! Your reviews help your fellow scientists make the right decisions. Thank you for your contribution.



Anti-PAK1 Antibody