

Anti-Dopamine Receptor D1/DRD1 Antibody

Catalog Number: PA1571

About DRD1

Dopamine receptor D1, also known as DRD1, is a human gene. It is the most highly expressed DA receptor subtype among the DA receptor family. Receptors for dopamine have been classified into two functional types, D1 and D2. They belong to the family of receptors acting through G (or guanine nucleotide-binding) proteins. D2 receptors inhibit adenylyl cyclase, but D1 receptors stimulate adenylyl cyclase and activate cyclic AMP-dependent protein kinases. Dopamine D1 and D2 receptors are targets of drug therapy in many psychomotor disorders, including Parkinson's disease and schizophrenia, and may also have a role in drug addiction and alcoholism. D1 receptors regulate neuron growth and differentiation, influence behaviour and modify dopamine D2 receptor-mediated events. And the presence of a D1 receptor gene restriction fragment length polymorphism will be helpful for future disease linkage studies. DRD1 also regulates the neurochemical architecture of the striatum and is critical for the normal expression of motor activity.

Overview

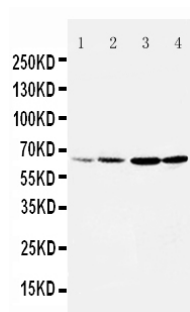
Product Name	Anti-Dopamine Receptor D1/DRD1 Antibody
Reactive Species	Human, Mouse, Rat
Description	Boster Bio Anti-Dopamine Receptor D1/DRD1 Antibody catalog # PA1571. Tested in IHC, WB applications. This antibody reacts with Human, Mouse, Rat.
Application	IHC, WB
Clonality	Polyclonal
Formulation	Each vial contains 5mg BSA, 0.9mg NaCl, 0.2mg Na2HPO4, 0.05mg Thimerosal, 0.05mg NaN3.
Storage Instructions	Store at -20°C for one year from date of receipt. After reconstitution, at 4°C for one month. It can also be aliquotted and stored frozen at -20°C for six months. Avoid repeated freeze-thaw cycles.
Host	Rabbit
Uniprot ID	P21728

Technical Details

Immunogen	A synthetic peptide corresponding to a sequence in the middle region of human DRD1, different from the related rat and mouse sequences by one amino acid.
Predicted Reactive Species	Hamster
Recommended Detection Systems	Boster recommends Enhanced Chemiluminescent Kit with anti-Rabbit IgG (EK1002) for Western blot, and HRP Conjugated anti-Rabbit IgG Super Vision Assay Kit (SV0002-1) for IHC(P).
Cross Reactivity	No cross-reactivity with other proteins
Isotype	Rabbit IgG

Form	Lyophilized
Concentration	Adding 0.2 ml of distilled water will yield a concentration of 500 ug/ml.
Purification	Immunogen affinity purified.
Suggested Dilutions	<p>Dilute the sample so that the expected range of concentrations fall within the detection range of this kit.</p> <p>If the expected range of concentration is unknown, a pilot test should be conducted to decide the optimal dilution ratio for your samples.</p> <p>Some PubMed article(s) citing the expression level of this target are as follows:</p> <p>Boster Bio's internal QC testing used:</p> <p>Immunohistochemistry (Paraffin-embedded Section), 0.5-1ug/ml, Human, Rat, Mouse, By Heat</p> <p>Western blot, 0.1-0.5ug/ml, Human, Rat, Mouse</p>

Anti-Dopamine Receptor D1/DRD1 Antibody (PA1571) Images



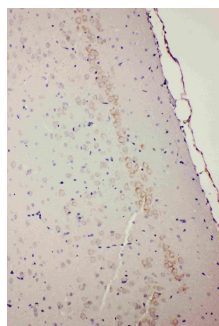
Anti-DRD1 antibody, PA1571, Western blotting

Lane 1: Rat Testis Tissue Lysate

Lane 2: Rat Brain Tissue Lysate

Lane 3: U87 Cell Lysate

Lane 4: HELA Cell Lysate



Anti-DRD1 antibody, PA1571, IHC(P)

IHC(P): Rat Brain Tissue

Submit a product review to Biocompare.com

Submit a review of this product to Biocompare.com to receive a \$20 Amazon.com giftcard! Your reviews help your fellow scientists make the right decisions. Thank you for your contribution.



Anti-Dopamine Receptor D1/DRD1 Antibody