

Anti-Dopamine Receptor D3/DRD3 Antibody

Catalog Number: PA1584

About DRD3

DRD3 is a dopamine receptor that differs in its pharmacology and signaling system from the D1 and D2 receptors and represents both an autoreceptor and a postsynaptic receptor. DRD3 is localized to limbic areas of the brain, which are associated with cognitive, emotional, and endocrine functions. The DRD3 gene, which is mapped to chromosome 3, is like the DRD2 gene but unlike most other members of this superfamily and it contains introns, 5 in number. The position of 2 of the introns corresponds to that of introns in DRD2. The D3 receptor appeared to mediate some of the effects of antipsychotic drugs and drugs used in the treatment of Parkinson disease, which were previously thought to interact only with D2 receptors.

Overview

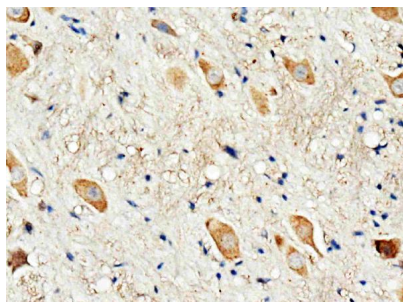
Product Name	Anti-Dopamine Receptor D3/DRD3 Antibody
Reactive Species	Human, Mouse, Rat
Description	Boster Bio Anti-Dopamine Receptor D3/DRD3 Antibody catalog # PA1584. Tested in IHC, WB applications. This antibody reacts with Human, Mouse, Rat.
Application	IHC, WB
Clonality	Polyclonal
Formulation	Each vial contains 5mg BSA, 0.9mg NaCl, 0.2mg Na ₂ HPO ₄ , 0.05mg Thimerosal, 0.05mg NaN ₃ .
Storage Instructions	Store at -20°C for one year from date of receipt. After reconstitution, at 4°C for one month. It can also be aliquotted and stored frozen at -20°C for six months. Avoid repeated freeze-thaw cycles.
Host	Rabbit
Uniprot ID	P35462

Technical Details

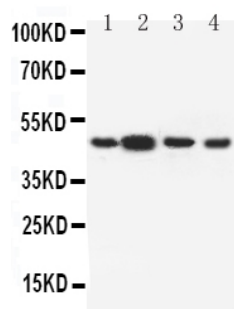
Immunogen	A synthetic peptide corresponding to a sequence at the C-terminus of human Dopamine Receptor D3, different from the related rat and mouse sequences by two amino acids.
Predicted Reactive Species	Chicken
Recommended Detection Systems	Boster recommends Enhanced Chemiluminescent Kit with anti-Rabbit IgG (EK1002) for Western blot, and HRP Conjugated anti-Rabbit IgG Super Vision Assay Kit (SV0002-1) for IHC(P).
Cross Reactivity	No cross-reactivity with other proteins
Isotype	Rabbit IgG
Form	Lyophilized

Concentration	Adding 0.2 ml of distilled water will yield a concentration of 500 ug/ml.
Purification	Immunogen affinity purified.
Suggested Dilutions	<p>Dilute the sample so that the expected range of concentrations fall within the detection range of this kit.</p> <p>If the expected range of concentration is unknown, a pilot test should be conducted to decide the optimal dilution ratio for your samples.</p> <p>Some PubMed article(s) citing the expression level of this target are as follows:</p> <p>Boster Bio's internal QC testing used:</p> <p>Immunohistochemistry (Paraffin-embedded Section), 0.5-1ug/ml, Rat, Human, Mouse, By Heat</p> <p>Western blot, 0.1-0.5ug/ml, Human, Rat, Mouse</p>

Anti-Dopamine Receptor D3/DRD3 Antibody (PA1584) Images



Anti-Dopamine Receptor D3 antibody, PA1584, IHC(P)
IHC(P): Rat Brain Tissue



Anti-Dopamine Receptor D3 antibody, PA1584, Western blotting
Lane 1: Rat Testis Tissue Lysate
Lane 2: Rat Brain Tissue Lysate
Lane 3: U87 Cell Lysate
Lane 4: HELA Cell Lysate

Submit a product review to Biocompare.com

Submit a review of this product to Biocompare.com to receive a \$20 Amazon.com giftcard! Your reviews help your fellow scientists make the right decisions. Thank you for your contribution.



Anti-Dopamine Receptor D3/DRD3 Antibody