

Anti-IL2 Receptor beta/IL2RB Antibody

Catalog Number: PA1615

About IL2RB

IL2RB (INTERLEUKIN 2 RECEPTOR, BETA), also called CD122, is a protein that in humans is encoded by the IL2RB gene. The gene represents the beta subunit and is a type I membrane protein. IL2RB is mapped to 22q12.3. The IL2RB gene contains 10 exons spanning about 24.3 kb and that the gene product is encoded by exons 2-10. The IL2 receptor is present in 3 forms with respect to binding ability to IL2: high, intermediate, and low affinity forms. Analysis of mutants of the beta chain of the IL2 receptor reveals that the granulocyte and monocyte differentiation signals are triggered by different cytoplasmic domains, showing that the signaling pathways responsible for these unique developmental outcomes are separable.

Overview

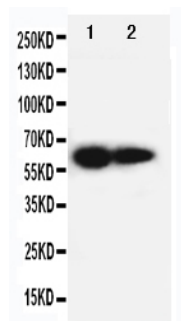
Product Name	Anti-IL2 Receptor beta/IL2RB Antibody
Reactive Species	Human
Description	Boster Bio Anti-IL2 Receptor beta/IL2RB Antibody catalog # PA1615. Tested in WB applications. This antibody reacts with Human.
Application	WB
Clonality	Polyclonal
Formulation	Each vial contains 5mg BSA, 0.9mg NaCl, 0.2mg Na2HPO4, 0.05mg Thimerosal, 0.05mg NaN3.
Storage Instructions	Store at -20°C for one year from date of receipt. After reconstitution, at 4°C for one month. It can also be aliquotted and stored frozen at -20°C for six months. Avoid repeated freeze-thaw cycles.
Host	Rabbit
Uniprot ID	P14784

Technical Details

Immunogen	A synthetic peptide corresponding to a sequence in the middle region of human IL2RB.
Predicted Reactive Species	Hamster
Recommended Detection Systems	Boster recommends Enhanced Chemiluminescent Kit with anti-Rabbit IgG (EK1002) for Western blot.
Cross Reactivity	No cross-reactivity with other proteins
Isotype	Rabbit IgG
Form	Lyophilized

Concentration	Adding 0.2 ml of distilled water will yield a concentration of 500 ug/ml.
Purification	Immunogen affinity purified.
Suggested Dilutions	<p>Dilute the sample so that the expected range of concentrations fall within the detection range of this kit.</p> <p>If the expected range of concentration is unknown, a pilot test should be conducted to decide the optimal dilution ratio for your samples.</p> <p>Some PubMed article(s) citing the expression level of this target are as follows:</p> <p>Boster Bio's internal QC testing used:</p> <p>Western blot, 0.1-0.5ug/ml, Human</p>

Anti-IL2 Receptor beta/IL2RB Antibody (PA1615) Images



Anti-IL2RB antibody, PA1615, Western blotting
Lane 1: PANC Cell Lysate
Lane 2: HELA Cell Lysate

Submit a product review to Biocompare.com

Submit a review of this product to Biocompare.com to receive a \$20 Amazon.com giftcard! Your reviews help your fellow scientists make the right decisions. Thank you for your contribution.



Anti-IL2 Receptor beta/IL2RB Antibody