

Anti-IL5RA Antibody

Catalog Number: PA1619

About IL5RA

IL5RA (INTERLEUKIN 5 RECEPTOR, ALPHA), also known as CD125, is a subunit of the Interleukin-5 receptor. IL5RA also denotes its human gene. The protein encoded by this gene is an interleukin 5 specific subunit of a heterodimeric cytokine receptor which is composed of a ligand specific alpha subunit and a signal transducing beta subunit shared by the receptors for interleukin 3 (IL3), colony stimulating factor 2 (CSF2/GM-CSF), and interleukin 5 (IL5). The IL5RA gene is mapped to 3p26-p24 by Southern blot analysis of DNA from a panel of mouse-human hybrid somatic cell lines complemented by in situ hybridization. And its Cytogenetic location is 3p26.2. Within this 15-residue stretch of IL5RA, the C-terminal phenylalanine is critical. The binding of this protein to IL5 depends on the beta subunit which is activated by the ligand binding and is required for the biological activities of IL5.

Overview

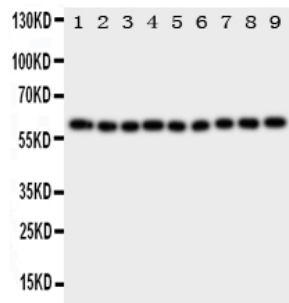
Product Name	Anti-IL5RA Antibody
Reactive Species	Human
Description	Boster Bio Anti-IL5RA Antibody catalog # PA1619. Tested in WB applications. This antibody reacts with Human.
Application	WB
Clonality	Polyclonal
Formulation	Each vial contains 5mg BSA, 0.9mg NaCl, 0.2mg Na2HPO4, 0.05mg Thimerosal, 0.05mg NaN3.
Storage Instructions	Store at -20°C for one year from date of receipt. After reconstitution, at 4°C for one month. It can also be aliquotted and stored frozen at -20°C for six months. Avoid repeated freeze-thaw cycles.
Host	Rabbit
Uniprot ID	Q01344

Technical Details

Immunogen	A synthetic peptide corresponding to a sequence at the N-terminus of human IL5RA.
Predicted Reactive Species	Hamster
Recommended Detection Systems	Boster recommends Enhanced Chemiluminescent Kit with anti-Rabbit IgG (EK1002) for Western blot.
Cross Reactivity	No cross-reactivity with other proteins
Isotype	Rabbit IgG
Form	Lyophilized

Concentration	Adding 0.2 ml of distilled water will yield a concentration of 500 ug/ml.
Purification	Immunogen affinity purified.
Suggested Dilutions	<p>Dilute the sample so that the expected range of concentrations fall within the detection range of this kit.</p> <p>If the expected range of concentration is unknown, a pilot test should be conducted to decide the optimal dilution ratio for your samples.</p> <p>Some PubMed article(s) citing the expression level of this target are as follows:</p> <p>Boster Bio's internal QC testing used:</p> <p>Western blot, 0.1-0.5ug/ml, Human</p>

Anti-IL5RA Antibody (PA1619) Images



Anti-IL5RA antibody, PA1619, Western blotting

All lanes: Anti IL5RA (PA1619) at 0.5ug/ml

Lane 1: A549 Whole Cell Lysate at 40ug

Lane 2: SMMC Whole Cell Lysate at 40ug

Lane 3: U87 Whole Cell Lysate at 40ug

Lane 4: 293T Whole Cell Lysate at 40ug

Lane 5: PANC Whole Cell Lysate at 40ug

Lane 6: HELA Whole Cell Lysate at 40ug

Lane 7: JURKAT Whole Cell Lysate at 40ug

Lane 8: RAJI Whole Cell Lysate at 40ug

Lane 9: CEM Whole Cell Lysate at 40ug

Predicted bind size: 48KD

Observed bind size: 60KD

Submit a product review to Biocompare.com

Submit a review of this product to Biocompare.com to receive a \$20 Amazon.com giftcard! Your reviews help your fellow scientists make the right decisions. Thank you for your contribution.



Anti-IL5RA Antibody