

Anti-Insulin Receptor/INSR Antibody

Catalog Number: PA1620

About INSR

INSR (INSULIN RECEPTOR) is a tetramer of 2 alpha and 2 beta subunits that are coded by a single gene and are joined by disulfide bonds, a mechanism parallel to that of its ligand, insulin. It belongs to the large class of tyrosine kinase receptors. The insulin receptor gene is mapped to 19p13.2. The insulin receptor mediates their activity by causing the addition of a phosphate group to particular tyrosines on certain proteins within a cell. The INSR gene spans more than 120 kb and has 22 exons. Functional studies of the INSR SNPs show no effect on mRNA levels or splicing in peripheral blood leukocytes or on binding of insulin to mononuclear cells.

Overview

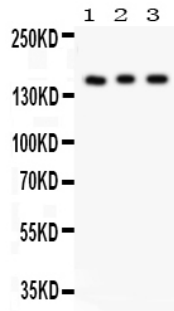
| | |
|----------------------|---|
| Product Name | Anti-Insulin Receptor/INSR Antibody |
| Reactive Species | Human, Mouse, Rat |
| Description | Boster Bio Anti-Insulin Receptor/INSR Antibody catalog # PA1620. Tested in WB applications. This antibody reacts with Human, Mouse, Rat. |
| Application | WB |
| Clonality | Polyclonal |
| Formulation | Each vial contains 5mg BSA, 0.9mg NaCl, 0.2mg Na ₂ HPO ₄ , 0.05mg Thimerosal, 0.05mg NaN ₃ . |
| Storage Instructions | Store at -20°C for one year from date of receipt. After reconstitution, at 4°C for one month. It can also be aliquotted and stored frozen at -20°C for six months. Avoid repeated freeze-thaw cycles. |
| Host | Rabbit |
| Uniprot ID | P06213 |

Technical Details

| | |
|-------------------------------|---|
| Immunogen | A synthetic peptide corresponding to a sequence at the C-terminus of human Insulin Receptor, different from the related rat and mouse sequences by two amino acids. |
| Predicted Reactive Species | Canine, Horse, Zebrafish |
| Recommended Detection Systems | Boster recommends Enhanced Chemiluminescent Kit with anti-Rabbit IgG (EK1002) for Western blot. |
| Cross Reactivity | No cross-reactivity with other proteins |
| Isotype | Rabbit IgG |
| Form | Lyophilized |
| Concentration | Adding 0.2 ml of distilled water will yield a concentration of 500 ug/ml. |

| | |
|---------------------|--|
| Purification | Immunogen affinity purified. |
| Suggested Dilutions | <p>Dilute the sample so that the expected range of concentrations fall within the detection range of this kit.</p> <p>If the expected range of concentration is unknown, a pilot test should be conducted to decide the optimal dilution ratio for your samples.</p> <p>Some PubMed article(s) citing the expression level of this target are as follows:</p> <p>Boster Bio's internal QC testing used:</p> <p>Western blot, 0.1-0.5ug/ml, Human, Rat, Mouse</p> |

Anti-Insulin Receptor/INSR Antibody (PA1620) Images



Anti-Insulin Receptor antibody, PA1620, Western blotting
All lanes: Anti Insulin Receptor(PA1620) at 0.5ug/ml
Lane 1: Rat Kidney Tissue Lysate at 50ug
Lane 2: PANC Whole Cell Lysate at 40ug
Lane 3: HELA Whole Cell Lysate at 40ug
Predicted bind size: 155KD
Observed bind size: 155KD

3 Publications Citing This Product

1. PubMed ID: 10.1016/j.anireprosci.2019.05.006, Effect of maternal feed restriction in dairy goats at different stages of gestation on skeletal muscle development and energy metabolism of kids at the time of births
2. PubMed ID: 10.1002/jbt.22488, Indomethacin decreases insulin secretion by reducing KCa3.1 as a biomarker of pancreatic tumor and causes apoptotic cell death
3. PubMed ID: 25352008, Wang Q, Sun X, Li X, Dong X, Li P, Zhao L. Mol Med Rep. 2015 Jan;11(1):151-8. Doi: 10.3892/Mmr.2014.2762. Epub 2014 Oct 23. Resveratrol Attenuates Intermittent Hypoxia-Induced Insulin Resistance In Rats: Involvement Of Sirtuin 1 And The Phosphatid...

Visit bosterbio.com/anti-insulin-receptor-antibody-pa1620-boster.html to see all 3 publications.

Submit a product review to Biocompare.com

Submit a review of this product to Biocompare.com to receive a \$20 Amazon.com giftcard! Your reviews help your fellow scientists make the right decisions. Thank you for your contribution.



Anti-Insulin Receptor/INSR Antibody