

Anti-NRG2 Antibody

Catalog Number: PA1637

About NRG2

Neuregulin 2, also known as NRG2, DON1 or NTAK, is a protein that in humans is encoded by the NRG2 gene. Neuregulin 2 (NRG2) is a novel member of the neuregulin family of growth and differentiation factors. The NRG2 gene is mapped to 5q31.2. Through interaction with the ErbB family of receptors, NRG2 induces the growth and differentiation of epithelial, neuronal, glial, and other types of cells. The human NRG2 gene contains 12 exons and the mouse Nrg2 gene contains 12 exons and spans about 180 kb. The NRG2 genomic structure is similar to that of neuregulin 1 (NRG1), another member of the neuregulin family of ligands. NRG1 and NRG2 mediate distinct biological processes by acting at different sites in tissues and eliciting different biological responses in cells. In particular, the neuregulin-ERBB signaling pathways play crucial roles in regulating the proliferation and differentiation of Schwann cells, the myelin-forming cells in the peripheral nervous system.

Overview

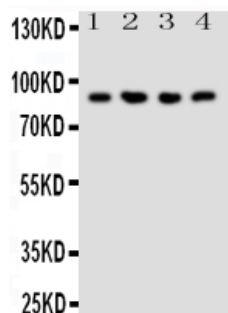
Product Name	Anti-NRG2 Antibody
Reactive Species	Human, Mouse, Rat
Description	Boster Bio Anti-NRG2 Antibody catalog # PA1637. Tested in WB applications. This antibody reacts with Human, Mouse, Rat.
Application	WB
Clonality	Polyclonal
Formulation	Each vial contains 5mg BSA, 0.9mg NaCl, 0.2mg Na2HPO4, 0.05mg Thimerosal, 0.05mg NaN3.
Storage Instructions	Store at -20°C for one year from date of receipt. After reconstitution, at 4°C for one month. It can also be aliquotted and stored frozen at -20°C for six months. Avoid repeated freeze-thaw cycles.
Host	Rabbit
Uniprot ID	O14511

Technical Details

Immunogen	A synthetic peptide corresponding to a sequence in the middle region of human NRG2, identical to the related rat sequence, and different from the related mouse sequence by one amino acid.
Predicted Reactive Species	Hamster
Recommended Detection Systems	Boster recommends Enhanced Chemiluminescent Kit with anti-Rabbit IgG (EK1002) for Western blot.
Cross Reactivity	No cross-reactivity with other proteins
Isotype	Rabbit IgG

Form	Lyophilized
Concentration	Adding 0.2 ml of distilled water will yield a concentration of 500 ug/ml.
Purification	Immunogen affinity purified.
Suggested Dilutions	<p>Dilute the sample so that the expected range of concentrations fall within the detection range of this kit.</p> <p>If the expected range of concentration is unknown, a pilot test should be conducted to decide the optimal dilution ratio for your samples.</p> <p>Some PubMed article(s) citing the expression level of this target are as follows:</p> <p>Boster Bio's internal QC testing used:</p> <p>Western blot, 0.1-0.5ug/ml, Human, Rat, Mouse</p>

Anti-NRG2 Antibody (PA1637) Images



Anti-NRG2 antibody, PA1637, Western blotting

All lanes: Anti NRG2 (PA1637) at 0.5ug/ml

Lane 1: Rat Liver Tissue Lysate at 50ug

Lane 2: COLO320 Whole Cell Lysate at 40ug

Lane 3: SMMC Whole Cell Lysate at 40ug

Lane 4: SW620 Whole Cell Lysate at 40ug

Predicted bind size: 91KD

Observed bind size: 91KD

Submit a product review to Biocompare.com

Submit a review of this product to Biocompare.com to receive a \$20 Amazon.com giftcard! Your reviews help your fellow scientists make the right decisions. Thank you for your contribution.



Anti-NRG2 Antibody