

Anti-Kallistatin/SERPINA4 Antibody

Catalog Number: PA1638

About SERPINA4

Serpina 4, also called Kallistatin, PI4 or TISSUE KALLIKREIN INHIBITOR, is a protein that in humans is encoded by the SERPINA4 gene. The serpina4 is a member of the serpin superfamily and represents a major inhibitor of human tissue kallikrein in the circulation. The SERPINA4 gene is localized to 14q32.13. The translated amino acid sequence of serpina4 matches the protein sequence and shares 44 to 46% sequence identity with other serpin family members. Kallistatin is a serine proteinase inhibitor (serpin) and a heparin-binding protein. It is localized in vascular smooth muscle cells and endothelial cells of blood vessels, suggesting that it may be involved in the regulation of vascular function. And serpina4 also plays a role in neointima hyperplasia.

Overview

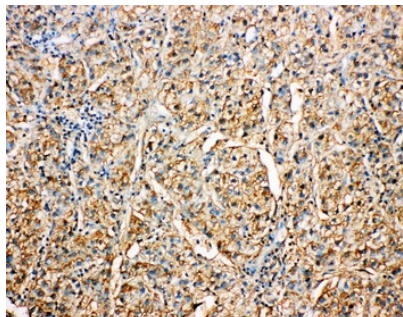
Product Name	Anti-Kallistatin/SERPINA4 Antibody
Reactive Species	Human
Description	Boster Bio Anti-Kallistatin/SERPINA4 Antibody catalog # PA1638. Tested in IHC, WB applications. This antibody reacts with Human.
Application	IHC, WB
Clonality	Polyclonal
Formulation	Each vial contains 5mg BSA, 0.9mg NaCl, 0.2mg Na2HPO4, 0.05mg Thimerosal, 0.05mg NaN3.
Storage Instructions	Store at -20°C for one year from date of receipt. After reconstitution, at 4°C for one month. It can also be aliquotted and stored frozen at -20°C for six months. Avoid repeated freeze-thaw cycles.
Host	Rabbit
Uniprot ID	P29622

Technical Details

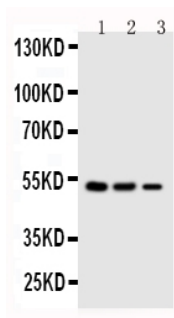
Immunogen	A synthetic peptide corresponding to a sequence at the C-terminus of human Kallistatin.
Predicted Reactive Species	Hamster
Recommended Detection Systems	Boster recommends Enhanced Chemiluminescent Kit with anti-Rabbit IgG (EK1002) for Western blot, and HRP Conjugated anti-Rabbit IgG Super Vision Assay Kit (SV0002-1) for IHC(P).
Cross Reactivity	No cross-reactivity with other proteins
Isotype	Rabbit IgG
Form	Lyophilized

Concentration	Adding 0.2 ml of distilled water will yield a concentration of 500 ug/ml.
Purification	Immunogen affinity purified.
Suggested Dilutions	<p>Dilute the sample so that the expected range of concentrations fall within the detection range of this kit.</p> <p>If the expected range of concentration is unknown, a pilot test should be conducted to decide the optimal dilution ratio for your samples.</p> <p>Some PubMed article(s) citing the expression level of this target are as follows:</p> <p>Boster Bio's internal QC testing used:</p> <p>Immunohistochemistry (Paraffin-embedded Section), 0.5-1ug/ml, Human, By Heat</p> <p>Western blot, 0.1-0.5ug/ml, Human</p>

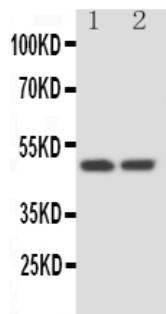
Anti-Kallistatin/SERPINA4 Antibody (PA1638) Images



Anti-Kallistatin antibody, PA1638, IHC(P)
IHC(P): Human Liver Cancer Tissue



Anti-Kallistatin antibody, PA1638, Western blotting
Lane 1: SMMC Cell Lysate
Lane 2: COLO320 Cell Lysate
Lane 3: JURKAT Cell Lysate



Anti-Kallistatin antibody, PA1638, Western blotting
Lane 1: HELA Cell Lysate
Lane 2: SKOV Cell Lysate

Submit a product review to Biocompare.com

Submit a review of this product to Biocompare.com to receive a \$20 Amazon.com giftcard! Your reviews help your fellow scientists make the right decisions. Thank you for your contribution.



Anti-Kallistatin/SERPINA4 Antibody