

## Anti-5 Lipoxygenase/ALOX5 Antibody

Catalog Number: PA1644

### About ALOX5

ALOX5 (ARACHIDONATE 5-LIPOXYGENASE), also known as LOG5 or 5-LO (5-LIPOXYGENASE), is an enzyme that in humans is encoded by the ALOX5 gene. ALOX5 is a member of the lipoxygenase family of enzymes which also transforms EFAs into leukotrienes and is a current target for pharmaceutical intervention in a number of diseases. The enzyme 5-lipoxygenase catalyzes 2 reactions in the formation of leukotrienes. The ALOX5 gene is mapped to chromosome 10q11.21 based on an alignment of the ALOX5 sequence with the genomic sequence. Human 5-LO contains 3 nuclear localization sequences (NLSs) and a phosphorylation site involved in nuclear localization. Compared with age-matched 5-LO competent mice, the 5-LO knockout mice developed less right heart hypertrophy. Pharmacologic inhibition or ALOX5 gene disruption resulted in a significant decrease of beta-amyloid production and gamma-secretase levels. ALOX5 activity is short-lived, apparently in part because of an intrinsic instability of the enzyme.

### Overview

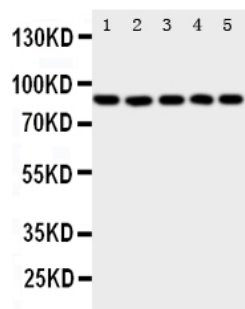
Product Name	Anti-5 Lipoxygenase/ALOX5 Antibody
Reactive Species	Human
Description	Boster Bio Anti-5 Lipoxygenase/ALOX5 Antibody catalog # PA1644. Tested in IHC, WB applications. This antibody reacts with Human.
Application	IHC, WB
Clonality	Polyclonal
Formulation	Each vial contains 5mg BSA, 0.9mg NaCl, 0.2mg Na2HPO4, 0.05mg Thimerosal, 0.05mg NaN3.
Storage Instructions	Store at -20°C for one year from date of receipt. After reconstitution, at 4°C for one month. It can also be aliquotted and stored frozen at -20°C for six months. Avoid repeated freeze-thaw cycles.
Host	Rabbit
Uniprot ID	P09917

### Technical Details

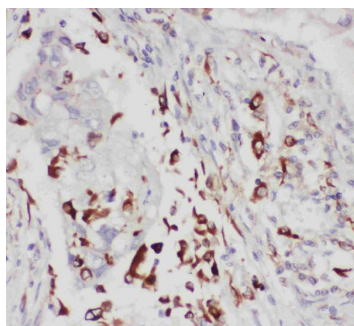
Immunogen	A synthetic peptide corresponding to a sequence at the C-terminus of human ALOX5, different from the related rat and mouse sequences by two amino acids.
Predicted Reactive Species	Bovine
Recommended Detection Systems	Boster recommends Enhanced Chemiluminescent Kit with anti-Rabbit IgG (EK1002) for Western blot, and HRP Conjugated anti-Rabbit IgG Super Vision Assay Kit (SV0002-1) for IHC(P).
Cross Reactivity	No cross-reactivity with other proteins
Isotype	Rabbit IgG

Form	Lyophilized
Concentration	Adding 0.2 ml of distilled water will yield a concentration of 500 ug/ml.
Purification	Immunogen affinity purified.
Suggested Dilutions	<p>Dilute the sample so that the expected range of concentrations fall within the detection range of this kit.</p> <p>If the expected range of concentration is unknown, a pilot test should be conducted to decide the optimal dilution ratio for your samples.</p> <p>Some PubMed article(s) citing the expression level of this target are as follows:</p> <p>Boster Bio's internal QC testing used:</p> <p>Immunohistochemistry (Paraffin-embedded Section), 0.5-1ug/ml, Human, By Heat</p> <p>Western blot, 0.1-0.5ug/ml, Human</p>

## Anti-5 Lipxygenase/ALOX5 Antibody (PA1644) Images



Anti-ALOX5 antibody, PA1644, Western blotting  
All lanes: Anti ALOX5 (PA1644) at 0.5ug/ml  
Lane 1: SW620 Whole Cell Lysate at 40ug  
Lane 2: JURKAT Whole Cell Lysate at 40ug  
Lane 3: COLO320 Whole Cell Lysate at 40ug  
Lane 4: A549 Whole Cell Lysate at 40ug  
Lane 5: MCF-7 Whole Cell Lysate at 40ug  
Predicted bind size: 78KD  
Observed bind size: 78KD



Anti-ALOX5 antibody, PA1644, IHC(P)  
IHC(P): Human Lung Cancer Tissue

## Submit a product review to Biocompare.com

Submit a review of this product to Biocompare.com to receive a \$20 Amazon.com giftcard! Your reviews help your fellow scientists make the right decisions. Thank you for your contribution.



Anti-5 Lipxygenase/ALOX5 Antibody