

Anti-MCM3 Antibody

Catalog Number: PA1651

About MCM3

MCM3 (MINICHROMOSOME MAINTENANCE, S. CEREVISIAE, HOMOLOG OF, 3), also called RLFB or P1 PROTEIN, is a protein that in humans is encoded by the MCM3 gene. MCM3 is one of the highly conserved mini-chromosome maintenance proteins (MCM) that are involved in the initiation of eukaryotic genome replication. The MCM3 gene is mapped to 6p12.2. This protein is a subunit of the protein complex that consists of MCM2-7. It has been shown to interact directly with MCM5/CDC46. This protein also interacts with, and thus is acetylated by MCM3AP, a chromatin-associated acetyltransferase. The acetylation of this protein inhibits the initiation of DNA replication and cell cycle progression.

Overview

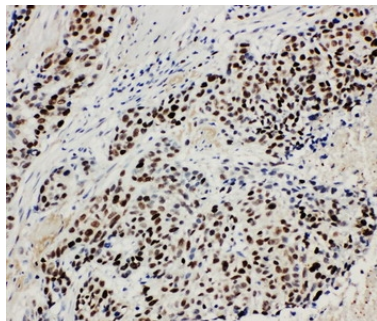
Product Name	Anti-MCM3 Antibody
Reactive Species	Human, Mouse, Rat
Description	Boster Bio Anti-MCM3 Antibody catalog # PA1651. Tested in Flow Cytometry, IF, IHC, ICC, WB applications. This antibody reacts with Human, Mouse, Rat.
Application	Flow Cytometry, IF, IHC, ICC, WB
Clonality	Polyclonal
Formulation	Each vial contains 5mg BSA, 0.9mg NaCl, 0.2mg Na2HPO4, 0.05mg Thimerosal, 0.05mg NaN3.
Storage Instructions	Store at -20°C for one year from date of receipt. After reconstitution, at 4°C for one month. It can also be aliquotted and stored frozen at -20°C for six months. Avoid repeated freeze-thaw cycles.
Host	Rabbit
Uniprot ID	P25205

Technical Details

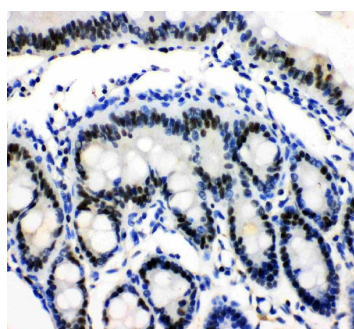
Immunogen	A synthetic peptide corresponding to a sequence at the N-terminus of human MCM3, identical to the related rat and mouse sequences.
Predicted Reactive Species	Hamster
Recommended Detection Systems	Boster recommends Enhanced Chemiluminescent Kit with anti-Rabbit IgG (EK1002) for Western blot, and HRP Conjugated anti-Rabbit IgG Super Vision Assay Kit (SV0002-1) for IHC(P) and ICC.
Cross Reactivity	No cross-reactivity with other proteins
Isotype	Rabbit IgG
Form	Lyophilized
Concentration	Adding 0.2 ml of distilled water will yield a concentration of 500 ug/ml.

Purification	Immunogen affinity purified.
Suggested Dilutions	<p>Dilute the sample so that the expected range of concentrations fall within the detection range of this kit.</p> <p>If the expected range of concentration is unknown, a pilot test should be conducted to decide the optimal dilution ratio for your samples.</p> <p>Some PubMed article(s) citing the expression level of this target are as follows:</p> <p>Boster Bio's internal QC testing used:</p> <p>Western blot, 0.1-0.5ug/ml, Human, Mouse, Rat</p> <p>Immunohistochemistry (Paraffin-embedded Section), 0.5-1ug/ml, Human, Mouse, Rat, By Heat</p> <p>Immunocytochemistry , 0.5-1ug/ml, Human, -</p> <p>Immunocytochemistry/Immunofluorescence, 2ug/ml, Human</p> <p>Flow Cytometry, 1-3ug/1x10⁶ cells, Human</p>

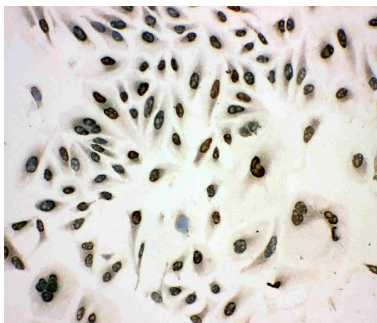
Anti-MCM3 Antibody (PA1651) Images



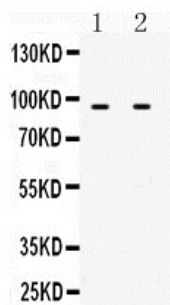
Anti-MCM3 antibody, PA1651, IHC(P)
IHC(P): Human Lung Cancer Tissue



Anti-MCM3 antibody, PA1651, IHC(P)
IHC(P): Rat Intestine Tissue

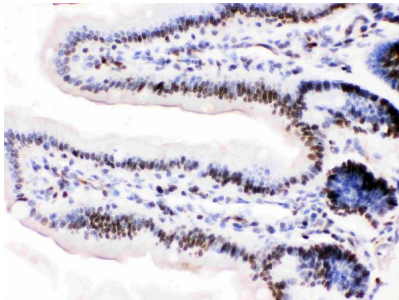
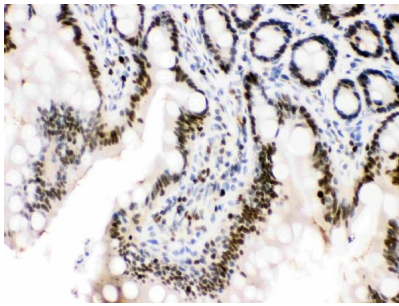


Anti-MCM3 antibody, PA1651, ICC
ICC: HELA Cell



Anti-MCM3 antibody, PA1651, Western blotting
All lanes: Anti MCM3 (PA1651) at 0.5ug/ml
Lane 1: NIH3T3 Whole Cell Lysate at 40ug
Lane 2: HEPA Whole Cell Lysate at 40ug
Predicted bind size: 91KD
Observed bind size: 91KD

Anti-MCM3 antibody, PA1651, IHC(P)
IHC(P): Rat Intestine Tissue



Anti-MCM3 antibody, PA1651, IHC(P)
IHC(P): Mouse Intestine Tissue

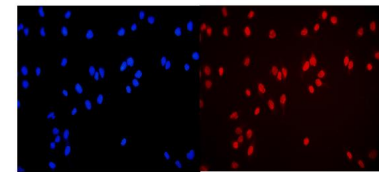


Figure 7. IF analysis of MCM3 using anti-MCM3 antibody (PA1651).
MCM3 was detected in immunocytochemical section of U20S cells. Enzyme antigen retrieval was performed using IHC enzyme antigen retrieval reagent (AR0022) for 15 mins. The cells were blocked with 10% goat serum. And then incubated with 2ug/mL rabbit anti-MCM3 Antibody (PA1651) overnight at 4°C. DyLight®594 Conjugated Goat Anti-Rabbit IgG (BA1142) was used as secondary antibody at 1:100 dilution and incubated for 30 minutes at 37°C. The section was counterstained with DAPI. Visualize using a fluorescence microscope and filter sets appropriate for the label used.

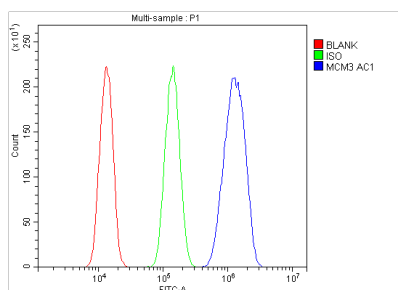


Figure 8. Flow Cytometry analysis of SiHa cells using anti-MCM3 antibody (PA1651).
Overlay histogram showing SiHa cells stained with PA1651 (Blue line). The cells were blocked with 10% normal goat serum. And then incubated with rabbit anti-MCM3 Antibody (PA1651, 1ug/1x10⁶ cells) for 30 min at 20°C. DyLight®488 conjugated goat anti-rabbit IgG (BA1127, 5-10ug/1x10⁶ cells) was used as secondary antibody for 30 minutes at 20°C. Isotype control antibody (Green line) was rabbit IgG (1ug/1x10⁶) used under the same conditions. Unlabelled sample (Red line) was also used as a control.

Submit a product review to Biocompare.com

Submit a review of this product to Biocompare.com to receive a \$20 Amazon.com giftcard! Your reviews help your fellow scientists make the right decisions. Thank you for your contribution.



Anti-MCM3 Antibody