

Anti-Amyloid-like protein 2 APLP2 Antibody

Catalog Number: PA1654

About APLP2

APLP2 (Amyloid beta (A4) precursor-like protein 2), also known as CDEBP or SPERM MEMBRANE PROTEIN, is a protein that in humans is encoded by the APLP2 gene. The APLP2 gene is mapped on 11q24.3. The human amyloid precursor-like protein APLP2 is a highly conserved homolog of a sequence-specific DNA-binding mouse protein with an important function in the cell cycle. APLP2 along with APLP1 are important modulators of glucose and insulin homeostasis. APLP2 associates with antigen presentation molecules like MHC class I molecules and regulates their surface expression by enhancing endocytosis.

Overview

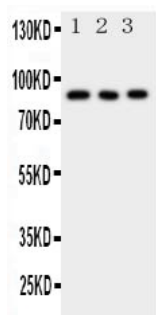
Product Name	Anti-Amyloid-like protein 2 APLP2 Antibody
Reactive Species	Human, Mouse, Rat
Description	Boster Bio Anti-Amyloid-like protein 2 APLP2 Antibody catalog # PA1654. Tested in IHC, WB applications. This antibody reacts with Human, Mouse, Rat.
Conjugate	FITC
Application	IHC, WB
Clonality	Monoclonal BAM-10
Formulation	Each vial contains 5mg BSA, 0.9mg NaCl, 0.2mg Na2HPO4, 0.05mg Thimerosal, 0.05mg NaN3.
Storage Instructions	Store at -20°C for one year from date of receipt. After reconstitution, at 4°C for one month. It can also be aliquotted and stored frozen at -20°C for six months. Avoid repeated freeze-thaw cycles.
Host	Hamster
Uniprot ID	Q06481

Technical Details

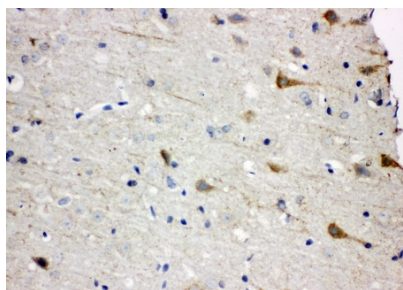
Immunogen	A synthetic peptide corresponding to a sequence at the C-terminal of human APLP2, identical to the related rat and mouse sequences.
Predicted Reactive Species	Hamster
Recommended Detection Systems	Boster recommends Enhanced Chemiluminescent Kit with anti-Mouse IgG (EK1001) for Western blot, and HRP Conjugated anti-Mouse IgG Super Vision Assay Kit (SV0001-1) for IHC(P).
Cross Reactivity	No cross reactivity with other proteins
Form	Lyophilized
Concentration	Add 0.2ml of distilled water will yield a concentration of 500ug/ml.

Purification	Immunogen Affinity Purified
Suggested Dilutions	<p>Dilute the sample so that the expected range of concentrations fall within the detection range of this kit.</p> <p>If the expected range of concentration is unknown, a pilot test should be conducted to decide the optimal dilution ratio for your samples.</p> <p>Some PubMed article(s) citing the expression level of this target are as follows:</p> <p>Boster Bio's internal QC testing used:</p> <p>Immunohistochemistry (Paraffin-embedded Section), 0.5-1ug/ml, Human, Rat, Mouse, By Heat</p> <p>Western blot, 0.1-0.5ug/ml, Human, Rat, Mouse</p>

Anti-Amyloid-like protein 2 APLP2 Antibody (PA1654) Images



Anti-APLP2 antibody, PA1654, Western blotting
All lanes: Anti APLP2 (PA1654) at 0.5ug/ml
Lane 1: Rat Brain Tissue Lysate at 50ug
Lane 2: Rat Cardiac Muscle Tissue Lysate at 50ug
Lane 3: SMMC Whole Cell Lysate at 40ug
Predicted bind size: 87KD
Observed bind size: 87KD



Anti-APLP2 antibody, PA1654, IHC(P)
IHC(P): Rat Brain Tissue

Submit a product review to Biocompare.com

Submit a review of this product to Biocompare.com to receive a \$20 Amazon.com giftcard! Your reviews help your fellow scientists make the right decisions. Thank you for your contribution.



Anti-Amyloid-like protein 2 APLP2 Antibody