

## Anti-Lipocalin-1 LCN1 Antibody

Catalog Number: PA1659

### About LCN1

Lipocalin-1 (LCN1), also known as PREALBUMIN, TEAR or VEGP, is a protein that in humans is encoded by the LCN1 gene. Lipocalin-1 is a member of the lipocalin family of small secretory proteins, which is mapped on 9q34.3. Lipocalin-1 is the primary lipid binding protein in tears and is overproduced in response to multiple stimuli including infection and stress. It may be a marker for chromosome aneuploidy as well as an autoantigen in Sjogren's syndrome. LCN1 inhibits the cysteine-protease papain in vitro, similar to cystatins. And LCN1 plays a role in the nonimmunologic defense and in the control of inflammatory processes in oral and ocular tissues. The investigations presented the first clear evidence that LCN1 is induced in infection or inflammation and supported the idea that this lipocalin functions as a physiologic protection factor of epithelia in vivo.

### Overview

Product Name	Anti-Lipocalin-1 LCN1 Antibody
Reactive Species	Human
Description	Boster Bio Anti-Lipocalin-1 LCN1 Antibody catalog # PA1659. Tested in IHC, WB applications. This antibody reacts with Human.
Application	IHC, WB
Clonality	Polyclonal
Formulation	Each vial contains 5mg BSA, 0.9mg NaCl, 0.2mg Na2HPO4, 0.05mg Thimerosal, 0.05mg NaN3.
Storage Instructions	Store at -20°C for one year from date of receipt. After reconstitution, at 4°C for one month. It can also be aliquotted and stored frozen at -20°C for six months. Avoid repeated freeze-thaw cycles.
Host	Rabbit
Uniprot ID	P31025

### Technical Details

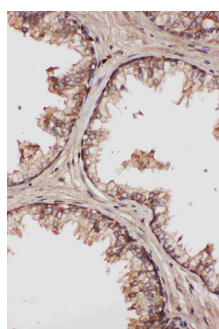
Immunogen	A synthetic peptide corresponding to a sequence in the middle region of human LCN1.
Predicted Reactive Species	Chicken
Recommended Detection Systems	Boster recommends Enhanced Chemiluminescent Kit with anti-Rabbit IgG (EK1002) for Western blot, and HRP Conjugated anti-Rabbit IgG Super Vision Assay Kit (SV0002-1) for IHC(P).
Cross Reactivity	No cross-reactivity with other proteins
Isotype	Rabbit IgG
Form	Lyophilized

Concentration	Adding 0.2 ml of distilled water will yield a concentration of 500 ug/ml.
Purification	Immunogen affinity purified.
Suggested Dilutions	<p>Dilute the sample so that the expected range of concentrations fall within the detection range of this kit.</p> <p>If the expected range of concentration is unknown, a pilot test should be conducted to decide the optimal dilution ratio for your samples.</p> <p>Some PubMed article(s) citing the expression level of this target are as follows:</p> <p>Boster Bio's internal QC testing used:</p> <p>Immunohistochemistry (Paraffin-embedded Section), 0.5-1ug/ml, Human, By Heat</p> <p>Western blot, 0.1-0.5ug/ml, Human</p>

## Anti-Lipocalin-1 LCN1 Antibody (PA1659) Images



Anti-LCN1 antibody, PA1659, Western blotting  
All lanes: Anti LCN1 (PA1659) at 0.5ug/ml  
Lane 1: JURKAT Whole Cell Lysate at 40ug  
Lane 2: COLO320 Whole Cell Lysate at 40ug  
Lane 3: SCG Whole Cell Lysate at 40ug  
Lane 4: HELA Whole Cell Lysate at 40ug  
Predicted bind size: 19KD  
Observed bind size: 19KD



Anti-LCN1 antibody, PA1659, IHC(P)  
IHC(P): Human Prostatic Cancer Tissue

## Submit a product review to Biocompare.com

Submit a review of this product to Biocompare.com to receive a \$20 Amazon.com giftcard! Your reviews help your fellow scientists make the right decisions. Thank you for your contribution.



Anti-Lipocalin-1 LCN1 Antibody