

Anti-Netrin 1/NTN1 Antibody

Catalog Number: PA1662

About NTN1

Netrin-1 (NTN1), also known as NTN1L, is a diffusible protein made by floor plate cells. Netrin-1 is found in the floor plate and neuroepithelial cells of the ventral region of the spinal cord, as well as other locations in the nervous system including the somatic mesoderm, pancreas and cardiac muscle. The human NTN1 gene is mapped to chromosome 17p13-p12 by FISH. Netrin-1 can attract spinal commissural axons and repel trochlear axons in vitro. And netrin-1 expression confers a selective advantage for tumor cell survival. The binding of netrin-1 to DCC appears to depend on the presence of a coreceptor or accessory proteins. Adenosine A2b receptor is actually a netrin-1 receptor and induces cAMP accumulation on binding netrin-1, and that netrin-1-dependent outgrowth of dorsal spinal cord axons directly involves A2b. Netrin-1 can promote intestinal tumor development, probably by regulating cell survival. Thus, a netrin-1 receptor or receptors function as conditional tumor suppressors. Expression of Unc5b triggered endothelial cell repulsion in response to netrin-1 in vitro, whereas a truncated Unc5b lacking the intracellular signaling domain failed to induce repulsion.

Overview

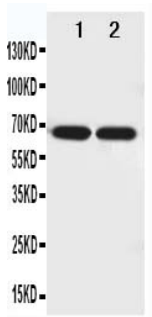
| | |
|----------------------|---|
| Product Name | Anti-Netrin 1/NTN1 Antibody |
| Reactive Species | Human, Mouse, Rat |
| Description | Boster Bio Anti-Netrin 1/NTN1 Antibody catalog # PA1662. Tested in WB applications. This antibody reacts with Human, Mouse, Rat. |
| Application | WB |
| Clonality | Polyclonal |
| Formulation | Each vial contains 5mg BSA, 0.9mg NaCl, 0.2mg Na2HPO4, 0.05mg Thimerosal, 0.05mg NaN3. |
| Storage Instructions | Store at -20°C for one year from date of receipt. After reconstitution, at 4°C for one month. It can also be aliquotted and stored frozen at -20°C for six months. Avoid repeated freeze-thaw cycles. |
| Host | Rabbit |
| Uniprot ID | O95631 |

Technical Details

| | |
|-------------------------------|--|
| Immunogen | A synthetic peptide corresponding to a sequence at the N-terminus of human Netrin 1, identical to the related rat and mouse sequences. |
| Predicted Reactive Species | Bovine |
| Recommended Detection Systems | Boster recommends Enhanced Chemiluminescent Kit with anti-Rabbit IgG (EK1002) for Western blot. |
| Cross Reactivity | No cross-reactivity with other proteins |

| | |
|---------------------|--|
| Isotype | Rabbit IgG |
| Form | Lyophilized |
| Concentration | Adding 0.2 ml of distilled water will yield a concentration of 500 ug/ml. |
| Purification | Immunogen affinity purified. |
| Suggested Dilutions | <p>Dilute the sample so that the expected range of concentrations fall within the detection range of this kit.</p> <p>If the expected range of concentration is unknown, a pilot test should be conducted to decide the optimal dilution ratio for your samples.</p> <p>Some PubMed article(s) citing the expression level of this target are as follows:</p> <p>Boster Bio's internal QC testing used:</p> <p>Western blot, 0.1-0.5ug/ml, Human, Rat, Mouse</p> |

Anti-Netrin 1/NTN1 Antibody (PA1662) Images



Anti-Netrin 1 antibody, PA1662, Western blotting
Lane 1: U87 Cell Lysate
Lane 2: COLO320 Cell Lysate

2 Publications Citing This Product

1. PubMed ID: 21193949, Qian-Hua W, Shao-Ping Z, Jian-Wen Z, Yun Y, Li Z. Mol Cell Biochem. 2011 Apr;350(1-2):81-7. Doi: 10.1007/S11010-010-0684-2. Epub 2010 Dec 31. Reduced Expression Of Netrin-1 Is Associated With Fetal Growth Restriction.
2. PubMed ID: 20714878, Zhong S, Zou L, Zhao Y, Hu B, Xie H. J Huazhong Univ Sci Technolog Med Sci. 2010 Aug;30(4):500-4. Doi: 10.1007/S11596-010-0457-X. Epub 2010 Aug 17. Effect Of Different Concentrations Of Neogenin On Proliferation, Apoptosis And Related Proliferativ...

Visit bosterbio.com/anti-netrin-1-antibody-pa1662-boster.html to see all 2 publications.

Submit a product review to Biocompare.com

Submit a review of this product to Biocompare.com to receive a \$20 Amazon.com giftcard! Your reviews help your fellow scientists make the right decisions. Thank you for your contribution.



Anti-Netrin 1/NTN1 Antibody