

Anti-Retinal dehydrogenase 1 ALDH1A1 Antibody

Catalog Number: PA1671

About ALDH1A1

ALDH1A1 (Aldehyde dehydrogenase 1 family, member A1), also called ALDH1, RALDH1 or ALDH, LIVER CYTOSOLIC, is an enzyme that in humans is encoded by the ALDH1A1 gene. And this protein belongs to the aldehyde dehydrogenases family of proteins. The ALDH1A1 gene is mapped on 9q21.13. ALDH1A1 also belongs to the group of corneal crystallins that help maintain the transparency of the cornea. ALDH1A1 is associated with a low Km for NAD, a high Km for acetaldehyde, and is strongly inactivated by disulfiram. The ALDH1 gene is about 53 kb long and is divided into 13 exons. Retinaldehyde is generated by ALDH1 from retinol, and its concentration is determined in large part by its subsequent catabolism by RALDH1 to retinoic acid.

Overview

Product Name	Anti-Retinal dehydrogenase 1 ALDH1A1 Antibody
Reactive Species	Human, Mouse, Rat
Description	Boster Bio Anti-Retinal dehydrogenase 1 ALDH1A1 Antibody catalog # PA1671. Tested in IHC, WB applications. This antibody reacts with Human, Mouse, Rat.
Application	IHC, WB
Clonality	Polyclonal
Formulation	Each vial contains 5mg BSA, 0.9mg NaCl, 0.2mg Na2HPO4, 0.05mg Thimerosal, 0.05mg NaN3.
Storage Instructions	Store at -20°C for one year from date of receipt. After reconstitution, at 4°C for one month. It can also be aliquotted and stored frozen at -20°C for six months. Avoid repeated freeze-thaw cycles.
Host	Rabbit
Uniprot ID	P00352

Technical Details

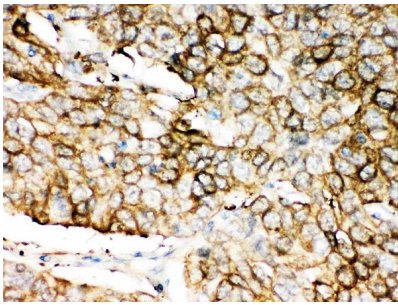
Immunogen	A synthetic peptide corresponding to a sequence in the middle region of human ALDH1A1, different from the related rat and mouse sequences by one amino acid.
Predicted Reactive Species	Bovine
Recommended Detection Systems	Boster recommends Enhanced Chemiluminescent Kit with anti-Rabbit IgG (EK1002) for Western blot, and HRP Conjugated anti-Rabbit IgG Super Vision Assay Kit (SV0002-1) for IHC(P).
Cross Reactivity	No cross-reactivity with other proteins
Isotype	Rabbit IgG
Form	Lyophilized

Concentration	Adding 0.2 ml of distilled water will yield a concentration of 500 ug/ml.
Purification	Immunogen affinity purified.
Suggested Dilutions	<p>Dilute the sample so that the expected range of concentrations fall within the detection range of this kit.</p> <p>If the expected range of concentration is unknown, a pilot test should be conducted to decide the optimal dilution ratio for your samples.</p> <p>Some PubMed article(s) citing the expression level of this target are as follows:</p> <p>Boster Bio's internal QC testing used:</p> <p>Immunohistochemistry (Paraffin-embedded Section), 0.5-1ug/ml, Human, By Heat</p> <p>Western blot, 0.1-0.5ug/ml, Human, Rat, Mouse</p>

Anti-Retinal dehydrogenase 1 ALDH1A1 Antibody (PA1671) Images



Anti-ALDH1A1 antibody, PA1671, Western blotting
Lane 1: Rat Lung Tissue Lysate
Lane 2: COLO320 Cell Lysate



Anti-ALDH1A1 antibody, PA1671, IHC(P)
IHC(P): Human Lung Cancer Tissue

2 Publications Citing This Product

1. PubMed ID: 31935835, Li Y,Chen F,Chen J,Chan S,He Y,Liu W,Zhang G.Disulfiram/Copper Induces Antitumor Activity against Both Nasopharyngeal Cancer Cells and Cancer-Associated Fibroblasts through ROS/MAPK and Ferroptosis Pathways.Cancers (Basel).2020 Jan 6;12(1):138.doi:10.3390

2. PubMed ID: 27840965, Breast cancer stem cells expressing different stem cell markers exhibit distinct biological characteristics

Visit bosterbio.com/anti-aldh1a1-antibody-pa1671-boster.html to see all 2 publications.

Submit a product review to Biocompare.com

Submit a review of this product to Biocompare.com to receive a \$20 Amazon.com giftcard! Your reviews help your fellow scientists make the right decisions. Thank you for your contribution.



Anti-Retinal dehydrogenase 1 ALDH1A1 Antibody