

Anti-Podoplanin/gp36/PDPN Antibody

Catalog Number: PA1674

About PDPN

PDPN (Podoplanin), also called T1A, T1A2, GP36, OTS8 or AGGRUS, is a protein that in humans is encoded by the PDPN gene. This gene encodes a type-I integral membrane glycoprotein with diverse distribution in human tissues. The PDPN gene is mapped to chromosome 1 by the International radiation Hybrid mapping consortium. The physiological function of PDPN may be related to its mucin-type character. The specific function of this protein has not been determined but it has been proposed as a marker of lung injury. Immunohistochemical analysis of PDPN in placenta, kidney, lung, and nasal polyps showed expression at the apical plasma membrane of vascular endothelial cells and in alveolar epithelial cells. Overexpression of rat PDPN in human and rodent endothelial cells promoted formation of elongated cell extensions and significantly increased endothelial cell adhesion, migration, and tube formation. Inhibition of PDPN expression by small interfering RNAs decreased cell adhesion in cultured human dermal lymphatic endothelial cells.

Overview

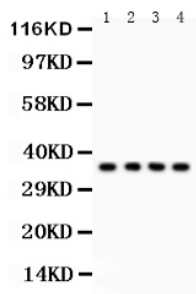
Product Name	Anti-Podoplanin/gp36/PDPN Antibody
Reactive Species	Human
Description	Boster Bio Anti-Podoplanin/gp36/PDPN Antibody catalog # PA1674. Tested in WB applications. This antibody reacts with Human.
Application	WB
Clonality	Polyclonal JLT-12
Formulation	Each vial contains 5mg BSA, 0.9mg NaCl, 0.2mg Na2HPO4, 0.05mg Thimerosal, 0.05mg NaN3.
Storage Instructions	Store at -20°C for one year from date of receipt. After reconstitution, at 4°C for one month. It can also be aliquotted and stored frozen at -20°C for six months. Avoid repeated freeze-thaw cycles.
Host	Rabbit
Uniprot ID	Q86YL7

Technical Details

Immunogen	A synthetic peptide corresponding to a sequence at the C-terminus of human Podoplanin/gp36.
Predicted Reactive Species	Canine, Rabbit
Recommended Detection Systems	Boster recommends Enhanced Chemiluminescent Kit with anti-Rabbit IgG (EK1002) for Western blot.
Cross Reactivity	No cross reactivity with other proteins
Form	Lyophilized

Concentration	Adding 0.2 ml of distilled water will yield a concentration of 500 ug/ml.
Purification	Immunogen affinity purified.
Suggested Dilutions	<p>Dilute the sample so that the expected range of concentrations fall within the detection range of this kit.</p> <p>If the expected range of concentration is unknown, a pilot test should be conducted to decide the optimal dilution ratio for your samples.</p> <p>Some PubMed article(s) citing the expression level of this target are as follows:</p> <p>Boster Bio's internal QC testing used:</p> <p>Western blot, 0.1-0.5ug/ml, Human</p>

Anti-Podoplanin/gp36/PDPN Antibody (PA1674) Images



Anti-Podoplanin/gp36 antibody, PA1674, Western blotting

All lanes: Anti PDPN (PA1674) at 0.5ug/ml

Lane 1: A549 Whole Cell Lysate at 40ug

Lane 2: SMMC Whole Cell Lysate at 40ug

Lane 3: 293T Whole Cell Lysate at 40ug

Lane 4: HELA Whole Cell Lysate at 40ug

Predicted bind size: 36KD

Observed bind size: 36KD

Submit a product review to Biocompare.com

Submit a review of this product to Biocompare.com to receive a \$20 Amazon.com giftcard! Your reviews help your fellow scientists make the right decisions. Thank you for your contribution.



Anti-Podoplanin/gp36/PDPN Antibody