

Anti-Podoplanin/gp36/PDPN Antibody

Catalog Number: PA1675

About Pdpn

PDPN (Podoplanin), also called T1A, T1A2, GP36, OTS8 or AGGRUS, is a protein that in humans is encoded by the PDPN gene. This gene encodes a type-I integral membrane glycoprotein with diverse distribution in human tissues. The PDPN gene is mapped to chromosome 1 by the International radiation Hybrid mapping consortium. The physiological function of PDPN may be related to its mucin-type character. The specific function of this protein has not been determined but it has been proposed as a marker of lung injury. Immunohistochemical analysis of PDPN in placenta, kidney, lung, and nasal polyps showed expression at the apical plasma membrane of vascular endothelial cells and in alveolar epithelial cells. Overexpression of rat PDPN in human and rodent endothelial cells promoted formation of elongated cell extensions and significantly increased endothelial cell adhesion, migration, and tube formation. Inhibition of PDPN expression by small interfering RNAs decreased cell adhesion in cultured human dermal lymphatic endothelial cells.

Overview

Product Name	Anti-Podoplanin/gp36/PDPN Antibody
Reactive Species	Mouse, Rat
Description	Boster Bio Anti-Podoplanin/gp36/PDPN Antibody catalog # PA1675. Tested in WB applications. This antibody reacts with Mouse, Rat.
Application	WB
Clonality	Polyclonal
Formulation	Each vial contains 4 mg Trehalose, 0.9 mg NaCl, 0.2mg Na ₂ HPO ₄ , 0.05 mg NaN ₃ .
Storage Instructions	Store at -20°C for one year from date of receipt. After reconstitution, at 4°C for one month. It can also be aliquotted and stored frozen at -20°C for six months. Avoid repeated freeze-thaw cycles.
Host	Rabbit
Uniprot ID	Q64294

Technical Details

Immunogen	A synthetic peptide corresponding to a sequence at the C-terminus of rat Podoplanin/gp36, different from the related mouse sequence by one amino acid.
Predicted Reactive Species	Bovine
Recommended Detection Systems	Boster recommends Enhanced Chemiluminescent Kit with anti-Rabbit IgG (EK1002) for Western blot.
Cross Reactivity	No cross-reactivity with other proteins
Isotype	Rabbit IgG

Form	Lyophilized
Concentration	Adding 0.2 ml of distilled water will yield a concentration of 500 ug/ml.
Purification	Immunogen affinity purified.
Suggested Dilutions	<p>Dilute the sample so that the expected range of concentrations fall within the detection range of this kit.</p> <p>If the expected range of concentration is unknown, a pilot test should be conducted to decide the optimal dilution ratio for your samples.</p> <p>Some PubMed article(s) citing the expression level of this target are as follows:</p> <p>Boster Bio's internal QC testing used:</p> <p>Western blot, 0.1-0.5ug/ml, Mouse, Rat</p>

Anti-Podoplanin/gp36/PDPN Antibody (PA1675) Images

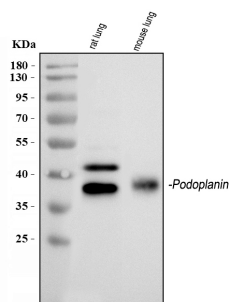


Figure 1. Western blot analysis of Podoplanin/gp36 using anti-Podoplanin/gp36 antibody (PA1675). Electrophoresis was performed on a 5-20% SDS-PAGE gel at 70V (Stacking gel) / 90V (Resolving gel) for 2-3 hours. The sample well of each lane was loaded with 30 ug of sample under reducing conditions.

Lane 1: rat lung tissue lysates,

Lane 2: mouse lung tissue lysates.

After electrophoresis, proteins were transferred to a nitrocellulose membrane at 150 mA for 50-90 minutes. Blocked the membrane with 5% non-fat milk/TBS for 1.5 hour at RT. The membrane was incubated with rabbit anti-Podoplanin/gp36 antigen affinity purified polyclonal antibody (Catalog # PA1675) at 0.5 ug/mL overnight at 4°C, then washed with TBS-0.1%Tween 3 times with 5 minutes each and probed with a goat anti-rabbit IgG-HRP secondary antibody at a dilution of 1:5000 for 1.5 hour at RT. The signal is developed using an Enhanced Chemiluminescent detection (ECL) kit (Catalog # EK1002) with Tanon 5200 system. A specific band was detected for Podoplanin/gp36 at approximately 38 kDa. The expected band size for Podoplanin/gp36 is at 38 kDa.

Submit a product review to Biocompare.com

Submit a review of this product to Biocompare.com to receive a \$20 Amazon.com giftcard! Your reviews help your fellow scientists make the right decisions. Thank you for your contribution.



Anti-Podoplanin/gp36/PDPN Antibody