

Anti-STAT6 Antibody

Catalog Number: PA1691

About STAT6

STAT6 is a human gene. The protein encoded by this gene is a member of the STAT family of transcription factors. The gene spans 19 kb and contains 23 exons. In response to cytokines and growth factors, STAT family members are phosphorylated by the receptor associated kinases, and then form homo- or heterodimers that translocate to the cell nucleus where they act as transcription activators. This protein plays a central role in exerting IL4 mediated biological responses. It is found to induce the expression of BCL2L1/BCL-X (L), which is responsible for the anti-apoptotic activity of IL4. Knockout studies in mice suggested the roles of this gene in differentiation of T helper 2 (Th2), expression of cell surface markers, and class switch of immunoglobulins.

Overview

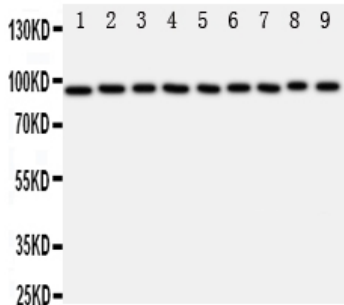
Product Name	Anti-STAT6 Antibody
Reactive Species	Human, Mouse, Rat
Description	Boster Bio Anti-STAT6 Antibody catalog # PA1691. Tested in IHC, WB applications. This antibody reacts with Human, Mouse, Rat.
Conjugate	FITC
Application	IHC, WB
Clonality	Monoclonal BAM-10
Formulation	Each vial contains 5mg BSA, 0.9mg NaCl, 0.2mg Na2HPO4, 0.05mg Thimerosal, 0.05mg NaN3.
Storage Instructions	Store at -20°C for one year from date of receipt. After reconstitution, at 4°C for one month. It can also be aliquotted and stored frozen at -20°C for six months. Avoid repeated freeze-thaw cycles.
Host	Hamster
Uniprot ID	P42226

Technical Details

Immunogen	A synthetic peptide corresponding to a sequence at the N-terminus of human STAT6, different from the related rat sequence by one amino acid, and from the mouse sequence by two amino acids.
Predicted Reactive Species	Hamster
Recommended Detection Systems	Boster recommends Enhanced Chemiluminescent Kit with anti-Rabbit IgG (EK1002) for Western blot, and HRP Conjugated anti-Rabbit IgG Super Vision Assay Kit (SV0002-1) for IHC(P).
Cross Reactivity	No cross reactivity with other proteins
Form	Lyophilized

Concentration	Add 0.2ml of distilled water will yield a concentration of 500ug/ml.
Purification	Immunogen Affinity Purified
Suggested Dilutions	<p>Dilute the sample so that the expected range of concentrations fall within the detection range of this kit.</p> <p>If the expected range of concentration is unknown, a pilot test should be conducted to decide the optimal dilution ratio for your samples.</p> <p>Some PubMed article(s) citing the expression level of this target are as follows:</p> <p>Boster Bio's internal QC testing used:</p> <p>Immunohistochemistry (Paraffin-embedded Section), 0.5-1ug/ml, Human, Rat, Mouse, By Heat</p> <p>Western blot, 0.1-0.5ug/ml, Human, Mouse, Rat</p>

Anti-STAT6 Antibody (PA1691) Images



Anti-STAT6 antibody, PA1691, Western blotting

All lanes: Anti STAT6 (PA1691) at 0.5ug/ml

Lane 1: Rat Testis Tissue Lysate at 50ug

Lane 2: Rat Ovary Tissue Lysate at 50ug

Lane 3: Mouse Testis Tissue Lysate at 50ug

Lane 4: Mouse Ovary Tissue Lysate at 50ug

Lane 5: HELA Whole Cell Lysate at 40ug

Lane 6: SKOV Whole Cell Lysate at 40ug

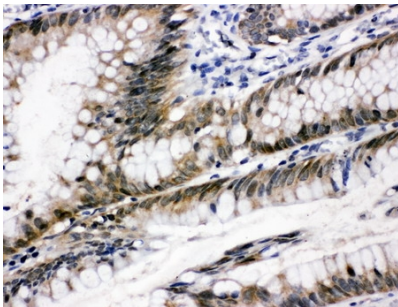
Lane 7: MM231 Whole Cell Lysate at 40ug

Lane 8: MM453 Whole Cell Lysate at 40ug

Lane 9: HT080 Whole Cell Lysate at 40ug

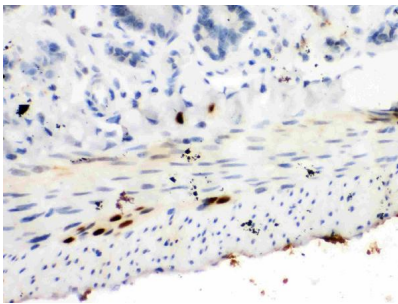
Predicted bind size: 94KD

Observed bind size: 94KD



Anti-STAT6 antibody, PA1691, IHC(P)

IHC(P): Human Intestinal Cancer Tissue



Anti-STAT6 antibody, PA1691, IHC(P)

IHC(P): Rat Intestine Tissue

1 Publications Citing This Product

1. PubMed ID: 24674464, Li Z, Guan Yq, Liu Jm. Biomaterials. 2014 Jun;35(18):5016-27. Doi: 10.1016/J.Biomaterials.2014.03.004. Epub 2014 Mar 25. The Role Of Stat-6 As A Key Transcription Regulator In Hela Cell Death Induced By Ifn- γ /Tnf- α Co-Immobilized On Nanoparticles.

Visit bosterbio.com/anti-stat6-antibody-pa1691-boster.html to see all 1 publications.

Submit a product review to Biocompare.com

Submit a review of this product to Biocompare.com to receive a \$20 Amazon.com giftcard! Your reviews help your fellow scientists make the right decisions. Thank you for your contribution.

