

Anti-Interleukin-6 IL6 Antibody

Catalog Number: PA1700

About IL6

Interleukin-6 (IL-6) is a protein that in humans is encoded by the IL6 gene. IL-6 is an interleukin that acts as both a pro-inflammatory and anti-inflammatory cytokine. It is secreted by T cells and macrophages to stimulate immune response to trauma, especially burns or other tissue damage leading to inflammation. IL-6 is one of the most important mediators of fever and of the acute phase response. IL-6 is also essential for hybridoma growth and is found in many supplemental cloning media such as briclone. Bowcock et al. (1988) assigned the IL6 gene to chromosome 7p21. By in situ hybridization and Southern blot analysis of mouse-human hybrid cell lines, Sutherland et al. (1988) mapped the IL6 gene to chromosome 7p15.

Overview

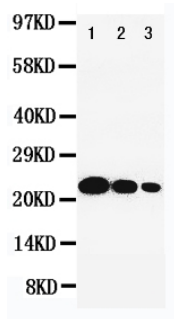
Product Name	Anti-Interleukin-6 IL6 Antibody
Reactive Species	Human
Description	Boster Bio Anti-Interleukin-6 IL6 Antibody catalog # PA1700. Tested in WB applications. This antibody reacts with Human.
Application	WB
Clonality	Polyclonal
Formulation	Each vial contains 5mg BSA, 0.9mg NaCl, 0.2mg Na2HPO4, 0.05mg Thimerosal, 0.05mg NaN3.
Storage Instructions	Store at -20°C for one year from date of receipt. After reconstitution, at 4°C for one month. It can also be aliquotted and stored frozen at -20°C for six months. Avoid repeated freeze-thaw cycles.
Host	Rabbit
Uniprot ID	P05231

Technical Details

Immunogen	A synthetic peptide corresponding to a sequence at the C-terminus of human IL-6.
Predicted Reactive Species	Bovine
Recommended Detection Systems	Boster recommends Enhanced Chemiluminescent Kit with anti-Rabbit IgG (EK1002) for Western blot.
Cross Reactivity	No cross-reactivity with other proteins
Isotype	Rabbit IgG
Form	Lyophilized
Concentration	Adding 0.2 ml of distilled water will yield a concentration of 500 ug/ml.

Purification	Immunogen affinity purified.
Suggested Dilutions	<p>Dilute the sample so that the expected range of concentrations fall within the detection range of this kit.</p> <p>If the expected range of concentration is unknown, a pilot test should be conducted to decide the optimal dilution ratio for your samples.</p> <p>Some PubMed article(s) citing the expression level of this target are as follows:</p> <p>Boster Bio's internal QC testing used:</p> <p>Western blot, 0.1-0.5ug/ml, Human</p>

Anti-Interleukin-6 IL6 Antibody (PA1700) Images



Anti-IL-6 antibody, PA1700, Western blotting
Lane 1: Recombinant Human IL-6 Protein 10ng
Lane 2: Recombinant Human IL-6 Protein 5ng
Lane 3: Recombinant Human IL-6 Protein 2.5ng

36 Publications Citing This Product

1. PubMed ID: 24603891, Sun W, Liu Db, Li Ww, Zhang LI, Long Gx, Wang Jf, Mei Q, Hu Gq. Int J Oncol. 2014 May;44(5):1551-60. Doi: 10.3892/Ijo.2014.2323. Epub 2014 Mar 5. Interleukin-6 Promotes The Migration And Invasion Of Nasopharyngeal Carcinoma Cell Lines And Upregula...
2. PubMed ID: 26990441, Inhibition of Acute Lung Injury by TNFR-Fc through Regulation of an Inflammation-Oxidative Stress Pathway
3. PubMed ID: 26221080, Protective effects of thalidomide on pulmonary injuries in a rat model of paraquat intoxication

Visit bosterbio.com/anti-il-6-antibody-pa1700-boster.html to see all 36 publications.

Submit a product review to Biocompare.com

Submit a review of this product to Biocompare.com to receive a \$20 Amazon.com giftcard! Your reviews help your fellow scientists make the right decisions. Thank you for your contribution.



Anti-Interleukin-6 IL6 Antibody