

Anti-Interleukin-13 IL13 Antibody

Catalog Number: PA1701

About IL13

IL-13, Interleukin 13, is a protein that in humans is encoded by the IL-13 gene. IL-13 is cytokine secreted by many cell types, but especially T helper type 2 (Th2) cells, that is an important mediator of allergic inflammation and disease. The IL-13 gene is mapped to 5q23-q31. IL-13 induces its effects through a multi-subunit receptor that includes the alpha chain of the IL-4 receptor (IL-4Ralpha) and at least one of two known IL-13-specific binding chains. IL-13 acts more prominently as a molecular bridge linking allergic inflammatory cells to the non-immune cells in contact with them, thereby altering physiological function.

Overview

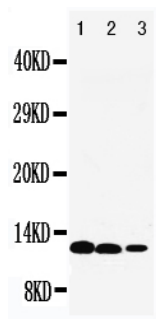
Product Name	Anti-Interleukin-13 IL13 Antibody
Reactive Species	Human
Description	Boster Bio Anti-Interleukin-13 IL13 Antibody catalog # PA1701. Tested in WB applications. This antibody reacts with Human.
Application	WB
Clonality	Polyclonal
Formulation	Each vial contains 5mg BSA, 0.9mg NaCl, 0.2mg Na2HPO4, 0.05mg Thimerosal, 0.05mg NaN3.
Storage Instructions	Store at -20°C for one year from date of receipt. After reconstitution, at 4°C for one month. It can also be aliquotted and stored frozen at -20°C for six months. Avoid repeated freeze-thaw cycles.
Host	Rabbit
Uniprot ID	P35225

Technical Details

Immunogen	A synthetic peptide corresponding to a sequence at the C-terminus of human IL-13.
Predicted Reactive Species	Bovine
Recommended Detection Systems	Boster recommends Enhanced Chemiluminescent Kit with anti-Rabbit IgG (EK1002) for Western blot.
Cross Reactivity	No cross-reactivity with other proteins
Isotype	Rabbit IgG
Form	Lyophilized
Concentration	Adding 0.2 ml of distilled water will yield a concentration of 500 ug/ml.

Purification	Immunogen affinity purified.
Suggested Dilutions	<p>Dilute the sample so that the expected range of concentrations fall within the detection range of this kit.</p> <p>If the expected range of concentration is unknown, a pilot test should be conducted to decide the optimal dilution ratio for your samples.</p> <p>Some PubMed article(s) citing the expression level of this target are as follows:</p> <p>Boster Bio's internal QC testing used:</p> <p>Western blot, 0.1-0.5ug/ml, Human</p>

Anti-Interleukin-13 IL13 Antibody (PA1701) Images



Anti-IL-13 antibody, PA1701, Western blotting
Lane 1: Recombinant Human IL-13 Protein 10ng
Lane 2: Recombinant Human IL-13 Protein 5ng
Lane 3: Recombinant Human IL-13 Protein 2.5ng

7 Publications Citing This Product

1. PubMed ID: 24498391, Li J, Li L, Zuo H, Ke C, Yan B, Wen H, Zhang Y, Yang X. Plos One. 2014 Feb 3;9(2):E87887. Doi: 10.1371/Journal.Pone.0087887. Ecollection 2014. T-Helper Type-2 Contact Hypersensitivity Of Balb/C Mice Aggravated By Dibutyl Phthalate Via Long-Term De...
2. PubMed ID: 26258681, An IL-13 Promoter Polymorphism Associated with Liver Fibrosis in Patients with Schistosoma japonicum
3. PubMed ID: 19739097, SUMF2 interacts with interleukin-13 and inhibits interleukin-13 secretion in bronchial smooth muscle cells

Visit bosterbio.com/anti-il-13-antibody-pa1701-boster.html to see all 7 publications.

Submit a product review to Biocompare.com

Submit a review of this product to Biocompare.com to receive a \$20 Amazon.com giftcard! Your reviews help your fellow scientists make the right decisions. Thank you for your contribution.



Anti-Interleukin-13 IL13 Antibody