

## Anti-Serotonin transporter/SLC6A4 Antibody

Catalog Number: PA1706

### About Slc6a4

SLC6A4 (Solute carrier family 6, member 4), also known as SERT (serotonin transporter), is a monoamine transporter protein. The SLC6A4 gene spans 31 kb and contains 14 exons. This protein integral membrane protein that transports the neurotransmitter serotonin from synaptic spaces into presynaptic neurons. This transport of serotonin by the SERT protein terminates the action of serotonin and recycles it in a sodium-dependent manner. This protein is the target of many antidepressant medications, including those of the SSRI class. It is a member of the sodium:neurotransmitter symporter family. A repeat length polymorphism in the promoter of this gene has been shown to affect the rate of serotonin uptake and may play a role in sudden infant death syndrome, aggressive behavior in Alzheimer disease patients, post-traumatic stress disorder and depression-susceptibility in people experiencing emotional trauma.

### Overview

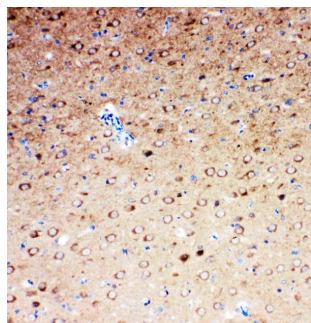
Product Name	Anti-Serotonin transporter/SLC6A4 Antibody
Reactive Species	Rat
Description	Boster Bio Anti-Serotonin transporter/SLC6A4 Antibody catalog # PA1706. Tested in IHC, WB applications. This antibody reacts with Rat.
Application	IHC, WB
Clonality	Polyclonal
Formulation	Each vial contains 5mg BSA, 0.9mg NaCl, 0.2mg Na <sub>2</sub> HPO <sub>4</sub> , 0.05mg Thimerosal, 0.05mg NaN <sub>3</sub> .
Storage Instructions	Store at -20°C for one year from date of receipt. After reconstitution, at 4°C for one month. It can also be aliquotted and stored frozen at -20°C for six months. Avoid repeated freeze-thaw cycles.
Host	Rabbit
Uniprot ID	P31652

### Technical Details

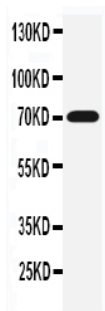
Immunogen	A synthetic peptide corresponding to a sequence at the N-terminus of rat SLC6A4, different from the related mouse sequence by one amino acid.
Predicted Reactive Species	Hamster
Recommended Detection Systems	Boster recommends Enhanced Chemiluminescent Kit with anti-Rabbit IgG (EK1002) for Western blot, and HRP Conjugated anti-Rabbit IgG Super Vision Assay Kit (SV0002-1) for IHC(P).
Cross Reactivity	No cross-reactivity with other proteins
Isotype	Rabbit IgG

Form	Lyophilized
Concentration	Adding 0.2 ml of distilled water will yield a concentration of 500 ug/ml.
Purification	Immunogen affinity purified.
Suggested Dilutions	<p>Dilute the sample so that the expected range of concentrations fall within the detection range of this kit.</p> <p>If the expected range of concentration is unknown, a pilot test should be conducted to decide the optimal dilution ratio for your samples.</p> <p>Some PubMed article(s) citing the expression level of this target are as follows:</p> <p>Boster Bio's internal QC testing used:</p> <p>Immunohistochemistry (Paraffin-embedded Section), 0.5-1ug/ml, Rat, By Heat</p> <p>Western blot, 0.1-0.5ug/ml, Rat</p>

## Anti-Serotonin transporter/SLC6A4 Antibody (PA1706) Images



Anti-SLC6A4 antibody, PA1706, IHC(P)  
IHC(P): Rat Brain Tissue



Anti-SLC6A4 antibody, PA1706, Western blotting  
WB: Rat Brain Tissue Lysate

## 1 Publications Citing This Product

1. PubMed ID: 10.1038/s41380-020-00978-y, Cocaine-induced locomotor stimulation involves autophagic degradation of the dopamine transporter

Visit [bosterbio.com/anti-slc6a4-antibody-pa1706-boster.html](https://bosterbio.com/anti-slc6a4-antibody-pa1706-boster.html) to see all 1 publications.

## Submit a product review to Biocompare.com

Submit a review of this product to Biocompare.com to receive a \$20 Amazon.com giftcard! Your reviews help your fellow scientists make the right decisions. Thank you for your contribution.



Anti-Serotonin transporter/SLC6A4 Antibody