

## Anti-alpha Lactalbumin/LALBA Antibody

Catalog Number: PA1708

### About LALBA

LALBA (lactalbumin, alpha or alpha-lactalbumin) is a protein that in humans is encoded by the LALBA gene. The LALBA gene is mapped on 12q13.11. alpha-Lactalbumin is an important whey protein in cow's milk (1 g/l), and is also present in the milk of many other mammalian species. In primates, alpha-lactalbumin expression is upregulated in response to the hormone prolactin and increases the production of lactose. alpha-Lactalbumin forms the regulatory subunit of the lactose synthase (LS) heterodimer and beta-1, 4-galactosyltransferase (beta4Gal-T1) forms the catalytic component. Together, these proteins enable LS to produce lactose by transferring galactose moieties to glucose. As a multimer, alpha-lactalbumin strongly binds calcium and zinc ions and may possess bactericidal or antitumor activity. A folding variant of human alpha-lactalbumin that may form in acidic environments such as the stomach, called HAMLET, probably induces apoptosis in tumor and immature cells.

### Overview

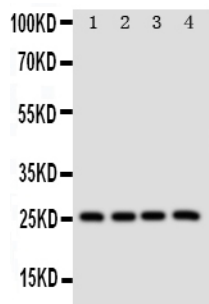
Product Name	Anti-alpha Lactalbumin/LALBA Antibody
Reactive Species	Human
Description	Boster Bio Anti-alpha Lactalbumin/LALBA Antibody catalog # PA1708. Tested in IHC, WB applications. This antibody reacts with Human.
Application	IHC, WB
Clonality	Polyclonal G9
Formulation	Each vial contains 5mg BSA, 0.9mg NaCl, 0.2mg Na2HPO4, 0.05mg Thimerosal, 0.05mg NaN3.
Storage Instructions	Store at -20°C for one year from date of receipt. After reconstitution, at 4°C for one month. It can also be aliquotted and stored frozen at -20°C for six months. Avoid repeated freeze-thaw cycles.
Host	Rabbit
Uniprot ID	P00709

### Technical Details

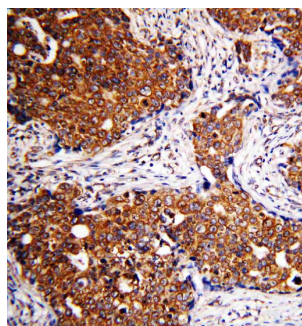
Immunogen	A synthetic peptide corresponding to a sequence at the N-terminus of human alpha Lactalbumin.
Predicted Reactive Species	Hamster
Recommended Detection Systems	Boster recommends Enhanced Chemiluminescent Kit with anti-Rabbit IgG (EK1002) for Western blot, and HRP Conjugated anti-Rabbit IgG Super Vision Assay Kit (SV0002-1) for IHC(P).
Cross Reactivity	No cross reactivity with other proteins
Form	Lyophilized
Concentration	Add 0.2ml of distilled water will yield a concentration of 500ug/ml.

Purification	Immunogen affinity purified.
Suggested Dilutions	<p>Dilute the sample so that the expected range of concentrations fall within the detection range of this kit.</p> <p>If the expected range of concentration is unknown, a pilot test should be conducted to decide the optimal dilution ratio for your samples.</p> <p>Some PubMed article(s) citing the expression level of this target are as follows:</p> <p>Boster Bio's internal QC testing used:</p> <p>Immunohistochemistry (Paraffin-embedded Section), 0.5-1ug/ml, Human, By Heat</p> <p>Western blot, 0.1-0.5ug/ml, Human</p>

## Anti-alpha Lactalbumin/LALBA Antibody (PA1708) Images



Anti-alpha Lactalbumin antibody, PA1708, Western blotting  
All lanes: Anti alpha Lactalbumin (PA1708) at 0.5ug/ml  
Lane 1: MCF-7 Whole Cell Lysate at 40ug  
Lane 2: MM231 Whole Cell Lysate at 40ug  
Lane 3: MM453 Whole Cell Lysate at 40ug  
Lane 4: HELA Whole Cell Lysate at 40ug  
Predicted bind size: 16KD  
Observed bind size: 25KD



Anti-alpha Lactalbumin antibody, PA1708, IHC(P)  
IHC(P): Human Mammary Cancer Tissue

## Submit a product review to Biocompare.com

Submit a review of this product to Biocompare.com to receive a \$20 Amazon.com giftcard! Your reviews help your fellow scientists make the right decisions. Thank you for your contribution.



Anti-alpha Lactalbumin/LALBA Antibody