

Anti-SERCA1 ATPase/ATP2A1 Antibody

Catalog Number: PA1719

About ATP2A1

SERCA1 (SARCOPLASMIC RETICULUM Ca (2+)-ATPase 1), also called ATP2A1, is an enzyme that in humans is encoded by the ATP2A1 gene. This gene encodes one of the SERCA Ca (2+)-ATPases, which are intracellular pumps located in the sarcoplasmic or endoplasmic reticula of muscle cells. The SERCA1 gene is mapped on 16p11.2. This enzyme catalyzes the hydrolysis of ATP coupled with the translocation of calcium from the cytosol to the sarcoplasmic reticulum lumen, and is involved in muscular excitation and contraction. Zhang et al. (1995) determined that the human ATP2A1 gene is 26 kb long and contains 23 exons, 1 of which can be alternatively spliced. Overexpression of S1T, but not full-length SERCA1, induced ER stress in HeLa cells and amplified ER stress through the PERK (EIF2AK3)-EIF2A -ATF4 -CHOP (DDIT3) pathway. Mutations in this gene cause some autosomal recessive forms of Brody disease, characterized by increasing impairment of muscular relaxation during exercise.

Overview

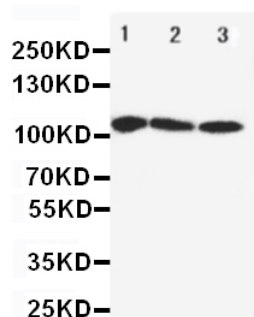
Product Name	Anti-SERCA1 ATPase/ATP2A1 Antibody
Reactive Species	Human, Mouse, Rat
Description	Boster Bio Anti-SERCA1 ATPase/ATP2A1 Antibody catalog # PA1719. Tested in IHC, WB applications. This antibody reacts with Human, Mouse, Rat.
Application	IHC, WB
Clonality	Polyclonal
Formulation	Each vial contains 5mg BSA, 0.9mg NaCl, 0.2mg Na2HPO4, 0.05mg Thimerosal, 0.05mg NaN3.
Storage Instructions	Store at -20°C for one year from date of receipt. After reconstitution, at 4°C for one month. It can also be aliquotted and stored frozen at -20°C for six months. Avoid repeated freeze-thaw cycles.
Host	Rabbit
Uniprot ID	O14983

Technical Details

Immunogen	A synthetic peptide corresponding to a sequence in the middle region of human SERCA1 ATPase, identical to the related rat and mouse sequences.
Predicted Reactive Species	Hamster
Recommended Detection Systems	Boster recommends Enhanced Chemiluminescent Kit with anti-Rabbit IgG (EK1002) for Western blot, and HRP Conjugated anti-Rabbit IgG Super Vision Assay Kit (SV0002-1) for IHC(P).
Cross Reactivity	No cross-reactivity with other proteins
Isotype	Rabbit IgG

Form	Lyophilized
Concentration	Adding 0.2 ml of distilled water will yield a concentration of 500 ug/ml.
Purification	Immunogen affinity purified.
Suggested Dilutions	<p>Dilute the sample so that the expected range of concentrations fall within the detection range of this kit.</p> <p>If the expected range of concentration is unknown, a pilot test should be conducted to decide the optimal dilution ratio for your samples.</p> <p>Some PubMed article(s) citing the expression level of this target are as follows:</p> <p>Boster Bio's internal QC testing used:</p> <p>Immunohistochemistry (Paraffin-embedded Section), 0.5-1ug/ml, Human, Rat, Mouse, By Heat</p> <p>Western blot, 0.1-0.5ug/ml, Human, Rat, Mouse</p>

Anti-SERCA1 ATPase/ATP2A1 Antibody (PA1719) Images

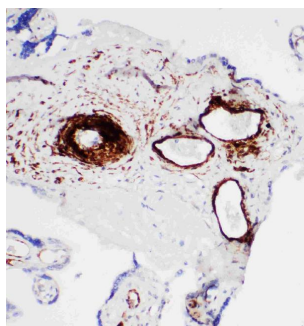


Anti-SERCA1 ATPase antibody, PA1719, Western blotting

Lane 1: Rat Skeletal Muscle Tissue Lysate

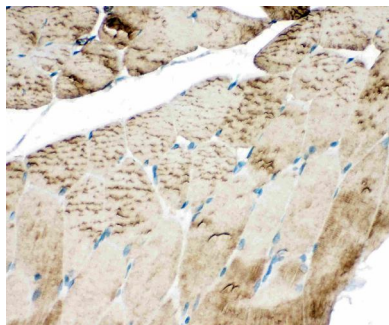
Lane 2: PANC Cell Lysate

Lane 3: U87 Cell Lysate



Anti-SERCA1 ATPase antibody, PA1719, IHC(P)

IHC(P): Human Placenta Tissue



Anti-SERCA1 ATPase antibody, PA1719, IHC(P)

IHC(P): Rat Skeletal Muscle Tissue

Submit a product review to Biocompare.com

Submit a review of this product to Biocompare.com to receive a \$20 Amazon.com giftcard! Your reviews help your fellow scientists make the right decisions. Thank you for your contribution.



Anti-SERCA1 ATPase/ATP2A1 Antibody