

Anti-SERCA2 ATPase/ATP2A2 Antibody

Catalog Number: PA1720

About ATP2A2

SERCA2 (SARCOPLASMIC RETICULUM Ca (2+)-ATPase 2), also called ATP2A2, ATP2B, encodes one of the SERCA Ca (2+)-ATPases, which are intracellular pumps located in the sarcoplasmic or endoplasmic reticula of muscle cells. They are closely related to the plasma membrane Ca (2+)-ATPases, or PMCA. SERCA2 belongs to the large family of P-type cation pumps that couple ATP hydrolysis with cation transport across membranes. The SERCA2 gene is mapped on 12q24.11. SERCA2 was expressed in all specimens, with pronounced expression in the subnuclear aspect of basal epidermal keratinocytes. There was variable suprabasal expression. SERCA2 expression was also observed in the infundibulum and outer root sheath of hair follicles; germinative and mature cells of sebaceous glands; secretory coil and duct of eccrine glands; apocrine gland cells; and arrector pili muscle. In Darier disease skin, strong SERCA2 positivity was detected in the basal, suprabasal, and acantholytic lesional cells. Perilesional Darier disease skin was comparable to normal skin.

Overview

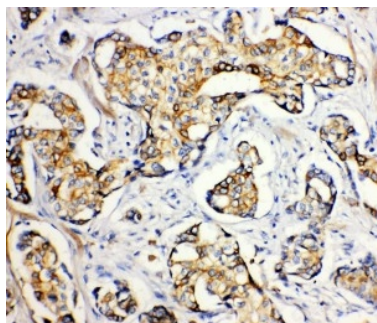
Product Name	Anti-SERCA2 ATPase/ATP2A2 Antibody
Reactive Species	Human, Mouse, Rat
Description	Boster Bio Anti-SERCA2 ATPase/ATP2A2 Antibody catalog # PA1720. Tested in IHC, WB applications. This antibody reacts with Human, Mouse, Rat.
Application	IHC, WB
Clonality	Polyclonal
Formulation	Each vial contains 5mg BSA, 0.9mg NaCl, 0.2mg Na2HPO4, 0.05mg Thimerosal, 0.05mg NaN3.
Storage Instructions	Store at -20°C for one year from date of receipt. After reconstitution, at 4°C for one month. It can also be aliquotted and stored frozen at -20°C for six months. Avoid repeated freeze-thaw cycles.
Host	Rabbit
Uniprot ID	P16615

Technical Details

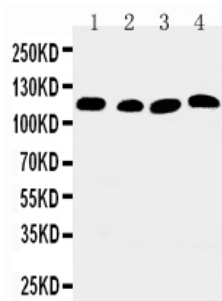
Immunogen	A synthetic peptide corresponding to a sequence in the middle region of human SERCA2 ATPase, identical to the related rat and mouse sequences.
Predicted Reactive Species	Hamster
Recommended Detection Systems	Boster recommends Enhanced Chemiluminescent Kit with anti-Rabbit IgG (EK1002) for Western blot, and HRP Conjugated anti-Rabbit IgG Super Vision Assay Kit (SV0002-1) for IHC(P).
Cross Reactivity	No cross-reactivity with other proteins
Isotype	Rabbit IgG

Form	Lyophilized
Concentration	Adding 0.2 ml of distilled water will yield a concentration of 500 ug/ml.
Purification	Immunogen affinity purified.
Suggested Dilutions	<p>Dilute the sample so that the expected range of concentrations fall within the detection range of this kit.</p> <p>If the expected range of concentration is unknown, a pilot test should be conducted to decide the optimal dilution ratio for your samples.</p> <p>Some PubMed article(s) citing the expression level of this target are as follows:</p> <p>Boster Bio's internal QC testing used:</p> <p>Immunohistochemistry (Paraffin-embedded Section), 0.5-1ug/ml, Human, Mouse, Rat, By Heat</p> <p>Western blot, 0.1-0.5ug/ml, Human, Rat, Mouse</p>

Anti-SERCA2 ATPase/ATP2A2 Antibody (PA1720) Images



Anti-SERCA2 ATPase antibody, PA1720, IHC(P)
IHC(P): Human Mammary Cancer Tissue



Anti-SERCA2 ATPase antibody, PA1720, Western blotting
Lane 1: Rat Skeletal Muscle Tissue Lysate
Lane 2: Rat Kidney Tissue Lysate
Lane 3: PANC Cell Lysate
Lane 4: SMMC Cell Lysate

1 Publications Citing This Product

1. PubMed ID: 24324360, Guo Y, Zeng Qc, Zhang Cq, Zhang Xz, Li Rx, Wu Jm, Guan J, Liu L, Zhang Xc, Li Jy, Wan Zm. Int J Med Sci. 2013 Nov 5;10(13):1837-45. Doi: 10.7150/Ijms.6786. Ecollection 2013. Extracellular Matrix Of Mechanically Stretched Cardiac Fibroblasts Improv...

Visit bosterbio.com/anti-serca2-atpase-antibody-pa1720-boster.html to see all 1 publications.

Submit a product review to Biocompare.com

Submit a review of this product to Biocompare.com to receive a \$20 Amazon.com giftcard! Your reviews help your fellow scientists make the right decisions. Thank you for your contribution.



Anti-SERCA2 ATPase/ATP2A2 Antibody