

Anti-GABA Transporter 1/GAT 1/SLC6A1 Antibody

Catalog Number: PA1721

About SLC6A1

GABA transporter 1 (GAT1), also known as sodium- and chloride-dependent GABA transporter 1, is a protein that in humans is encoded by the SLC6A1 gene. GABA Transporter 1 uses Na⁺ and Cl⁻ to create a gradient, which removes or adds GABA to extracellular spaces in the cerebrum and cerebellum. The stoichiometry for GABA Transporter 1 is 2 Na⁺: 1 Cl⁻: 1 GABA. The activity of GAT1 is largely dependent on the presence of Na⁺, while Cl⁻ assists by increasing the ability for GAT-1 to uptake GABA.

Overview

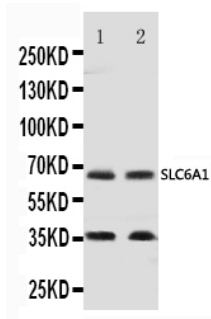
Product Name	Anti-GABA Transporter 1/GAT 1/SLC6A1 Antibody
Reactive Species	Human, Mouse, Rat
Description	Boster Bio Anti-GABA Transporter 1/GAT 1/SLC6A1 Antibody catalog # PA1721. Tested in IHC, WB applications. This antibody reacts with Human, Mouse, Rat.
Application	IHC, WB
Clonality	Polyclonal
Formulation	Each vial contains 5mg BSA, 0.9mg NaCl, 0.2mg Na ₂ HPO ₄ , 0.05mg Thimerosal, 0.05mg NaN ₃ .
Storage Instructions	Store at -20°C for one year from date of receipt. After reconstitution, at 4°C for one month. It can also be aliquotted and stored frozen at -20°C for six months. Avoid repeated freeze-thaw cycles.
Host	Rabbit
Uniprot ID	P30531

Technical Details

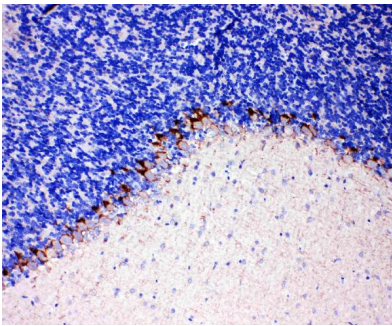
Immunogen	A synthetic peptide corresponding to a sequence at the C-terminus of human GABA Transporter 1, identical to the related rat and mouse sequences.
Predicted Reactive Species	Hamster
Recommended Detection Systems	Boster recommends Enhanced Chemiluminescent Kit with anti-Rabbit IgG (EK1002) for Western blot, and HRP Conjugated anti-Rabbit IgG Super Vision Assay Kit (SV0002-1) for IHC(P).
Cross Reactivity	No cross-reactivity with other proteins
Isotype	Rabbit IgG
Form	Lyophilized
Concentration	Adding 0.2 ml of distilled water will yield a concentration of 500 ug/ml.

Purification	Immunogen affinity purified.
Suggested Dilutions	<p>Dilute the sample so that the expected range of concentrations fall within the detection range of this kit.</p> <p>If the expected range of concentration is unknown, a pilot test should be conducted to decide the optimal dilution ratio for your samples.</p> <p>Some PubMed article(s) citing the expression level of this target are as follows:</p> <p>Boster Bio's internal QC testing used:</p> <p>Immunohistochemistry (Paraffin-embedded Section), 0.5-1ug/ml, Rat, Human, Mouse , By Heat</p> <p>Western blot, 0.1-0.5ug/ml, Mouse, Rat, Human</p>

Anti-GABA Transporter 1/GAT 1/SLC6A1 Antibody (PA1721) Images



Anti-GABA Transporter 1/GAT 1 antibody, PA1721, Western blotting
Lane 1: Rat Brain Tissue Lysate
Lane 2: Mouse Brain Tissue Lysate



Anti-GABA Transporter 1/GAT 1 antibody, PA1721, IHC(P)
IHC(P): Rat Brain Tissue

1 Publications Citing This Product

1. PubMed ID: 21956205, Lan F, Yue X, Han L, Shi Z, Yang Y, Pu P, Yao Z, Kang C. Int J Oncol. 2012 Feb;40(2):519-26. Doi: 10.3892/Ijo.2011.1215. Epub 2011 Sep 28. Genome-Wide Identification Of Tcf7L2/Tcf4 Target Mirnas Reveals A Role For Mir-21 In Wnt-Driven Epithelial C...

Visit bosterbio.com/anti-gaba-transporter-1-gat-1-antibody-pa1721-boster.html to see all 1 publications.

Submit a product review to Biocompare.com

Submit a review of this product to Biocompare.com to receive a \$20 Amazon.com giftcard! Your reviews help your fellow scientists make the right decisions. Thank you for your contribution.



Anti-GABA Transporter 1/GAT 1/SLC6A1 Antibody