

Anti-PAK6 Antibody

Catalog Number: PA1729

About PAK6

Serine/threonine-protein kinase PAK 6 (p21 Protein-activated Kinase 6) is an enzyme that in humans is encoded by the PAK6 gene. The PAK6 gene is mapped to chromosome 15q15. based on an alignment of the PAK6 sequence with the genomic sequence. This gene encodes a protein that shares a high degree of sequence similarity with p21-activated kinase (PAK) family members. The proteins of this family are Rac/Cdc42-associated Ste20-like Ser/Thr protein kinases, characterized by a highly conserved amino-terminal Cdc42/Rac interactive binding (CRIB) domain and a carboxyl-terminal kinase domain. PAK kinases are implicated in the regulation of a number of cellular processes, including cytoskeleton rearrangement, apoptosis and the MAP kinase signaling pathway. The protein encoded by this gene was found to interact with androgen receptor (AR), which is a steroid hormone-dependent transcription factor that is important for male sexual differentiation and development. The p21-activated protein kinase 6 gene was found to be highly expressed in testis and prostate tissues and the encoded protein was shown to cotranslocate into the nucleus with AR in response to androgen.

Overview

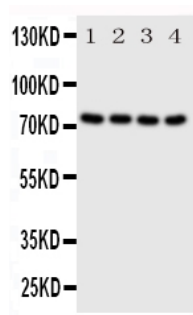
Product Name	Anti-PAK6 Antibody
Reactive Species	Human, Mouse, Rat
Description	Boster Bio Anti-PAK6 Antibody catalog # PA1729. Tested in IHC, WB applications. This antibody reacts with Human, Mouse, Rat.
Application	IHC, WB
Clonality	Polyclonal
Formulation	Each vial contains 5mg BSA, 0.9mg NaCl, 0.2mg Na2HPO4, 0.05mg Thimerosal, 0.05mg NaN3.
Storage Instructions	Store at -20°C for one year from date of receipt. After reconstitution, at 4°C for one month. It can also be aliquotted and stored frozen at -20°C for six months. Avoid repeated freeze-thaw cycles.
Host	Rabbit
Uniprot ID	Q9NQ5

Technical Details

Immunogen	A synthetic peptide corresponding to a sequence at the N-terminus of human PAK6, identical to the related rat and mouse sequences.
Predicted Reactive Species	Hamster
Recommended Detection Systems	Boster recommends Enhanced Chemiluminescent Kit with anti-Rabbit IgG (EK1002) for Western blot, and HRP Conjugated anti-Rabbit IgG Super Vision Assay Kit (SV0002-1) for IHC(P).
Cross Reactivity	No cross-reactivity with other proteins

Isotype	Rabbit IgG
Form	Lyophilized
Concentration	Adding 0.2 ml of distilled water will yield a concentration of 500 ug/ml.
Purification	Immunogen affinity purified.
Suggested Dilutions	<p>Dilute the sample so that the expected range of concentrations fall within the detection range of this kit.</p> <p>If the expected range of concentration is unknown, a pilot test should be conducted to decide the optimal dilution ratio for your samples.</p> <p>Some PubMed article(s) citing the expression level of this target are as follows:</p> <p>Boster Bio's internal QC testing used:</p> <p>Immunohistochemistry (Paraffin-embedded Section), 0.5-1ug/ml, Rat, Human, Mouse, By Heat</p> <p>Western blot, 0.1-0.5ug/ml, Human, Rat, Mouse</p>

Anti-PAK6 Antibody (PA1729) Images



Anti-PAK6 antibody, PA1729, Western blotting

All lanes: Anti PAK6 (PA1729) at 0.5ug/ml

Lane 1: HELA Whole Cell Lysate at 40ug

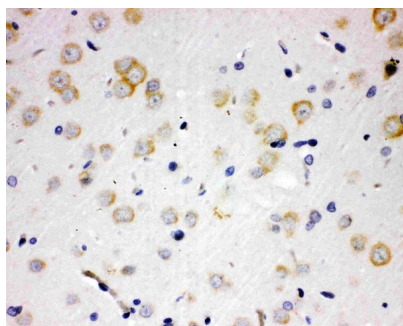
Lane 2: 293T Whole Cell Lysate at 40ug

Lane 3: RAJI Whole Cell Lysate at 40ug

Lane 4: COLO320 Whole Cell Lysate at 40ug

Predicted bind size: 75KD

Observed bind size: 75KD



Anti-PAK6 antibody, PA1729, IHC(P)

IHC(P): Rat Brain Tissue

Submit a product review to Biocompare.com

Submit a review of this product to Biocompare.com to receive a \$20 Amazon.com giftcard! Your reviews help your fellow scientists make the right decisions. Thank you for your contribution.



Anti-PAK6 Antibody