

Anti-Granzyme B/GZMB Antibody

Catalog Number: PA1738

About GZMB

Granzyme B is a serine protease that in humans is encoded by the GZMB gene. Granzyme B is expressed by cytotoxic T lymphocytes (CTL) and natural killer (NK) cells. CTL and NK cells share the remarkable ability to recognize specific infected target cells. They are thought to protect their host by inducing apoptosis of cells that bear on their surface "nonself" antigens, usually peptides or proteins resulting from infection by intracellular pathogens. The protein encoded by this gene is crucial for the rapid induction of target cell apoptosis by CTL in cell-mediated immune response.

Overview

Product Name	Anti-Granzyme B/GZMB Antibody
Reactive Species	Human
Description	Boster Bio Anti-Granzyme B/GZMB Antibody catalog # PA1738. Tested in WB applications. This antibody reacts with Human.
Application	WB
Clonality	Polyclonal
Formulation	Each vial contains 5mg BSA, 0.9mg NaCl, 0.2mg Na ₂ HPO ₄ , 0.05mg Thimerosal, 0.05mg NaN ₃ .
Storage Instructions	Store at -20°C for one year from date of receipt. After reconstitution, at 4°C for one month. It can also be aliquotted and stored frozen at -20°C for six months. Avoid repeated freeze-thaw cycles.
Host	Rabbit
Uniprot ID	P10144

Technical Details

Immunogen	A synthetic peptide corresponding to a sequence at the C-terminus of human Granzyme B.
Predicted Reactive Species	Hamster
Recommended Detection Systems	Boster recommends Enhanced Chemiluminescent Kit with anti-Rabbit IgG (EK1002) for Western blot.
Cross Reactivity	No cross-reactivity with other proteins
Isotype	Rabbit IgG
Form	Lyophilized
Concentration	Adding 0.2 ml of distilled water will yield a concentration of 500 ug/ml.
Purification	Immunogen affinity purified.

Suggested Dilutions

Dilute the sample so that the expected range of concentrations fall within the detection range of this kit.

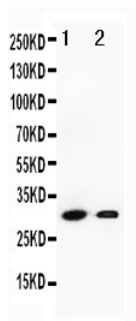
If the expected range of concentration is unknown, a pilot test should be conducted to decide the optimal dilution ratio for your samples.

Some PubMed article(s) citing the expression level of this target are as follows:

Boster Bio's internal QC testing used:

Western blot, 0.1-0.5ug/ml, Human

Anti-Granzyme B/GZMB Antibody (PA1738) Images



Anti-Granzyme B antibody, PA1738, Western blotting
Lane 1: SMMC Cell Lysate
Lane 2: HEPA Cell Lysate

Submit a product review to Biocompare.com

Submit a review of this product to Biocompare.com to receive a \$20 Amazon.com giftcard! Your reviews help your fellow scientists make the right decisions. Thank you for your contribution.



Anti-Granzyme B/GZMB Antibody