

Anti-ALK Antibody

Catalog Number: PA1741

About ALK

ALK (Anaplastic lymphoma kinase) also known as ALK tyrosine kinase receptor or CD246 (cluster of differentiation 246) is an enzyme that in humans is encoded by the ALK gene. The ALK gene is mapped on 2p23.2-p23.1. Expressed in the small intestine, testis, and brain but not in normal lymphoid cells, ALK shows greatest sequence similarity to the insulin receptor subfamily of kinases. ALK plays an important role in the development of the brain and exerts its effects on specific neurons in the nervous system. The deduced amino acid sequences reveal that ALK is a novel receptor tyrosine kinase having a putative transmembrane domain and an extracellular domain. In *Drosophila*, localized Jeb activates Alk and the downstream Ras/mitogen-activated protein kinase cascade to specify a select group of visceral muscle precursors as muscle-patterning pioneers. Functional RNA interference screening on a set of these transcriptional targets revealed that CEBPB and BCL2A1 were absolutely necessary to induce cell transformation and/or to sustain growth and survival of ALK-positive ALCL cells. One particularly informative case presented a high-level gene amplification that was strictly limited to ALK, indicating that this gene may contribute on its own to neuroblastoma development. Mutated ALK proteins were overexpressed, hyperphosphorylated, and showed constitutive kinase activity. The knockdown of ALK expression in ALK-mutated cells, but also in cell lines overexpressing a wildtype ALK, led to a marked decrease of cell proliferation.

Overview

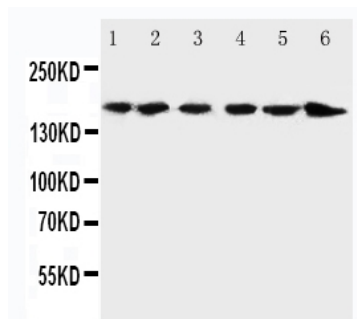
Product Name	Anti-ALK Antibody
Reactive Species	Human, Mouse, Rat
Description	Boster Bio Anti-ALK Antibody catalog # PA1741. Tested in IHC, WB applications. This antibody reacts with Human, Mouse, Rat.
Application	IHC, WB
Clonality	Polyclonal
Formulation	Each vial contains 5mg BSA, 0.9mg NaCl, 0.2mg Na ₂ HPO ₄ , 0.05mg Thimerosal, 0.05mg NaN ₃ .
Storage Instructions	Store at -20°C for one year from date of receipt. After reconstitution, at 4°C for one month. It can also be aliquotted and stored frozen at -20°C for six months. Avoid repeated freeze-thaw cycles.
Host	Rabbit
Uniprot ID	Q9UM73

Technical Details

Immunogen	A synthetic peptide corresponding to a sequence at the C-terminus of human ALK, identical to the related rat and mouse sequences.
Predicted Reactive Species	Bovine
Recommended Detection Systems	Boster recommends Enhanced Chemiluminescent Kit with anti-Rabbit IgG (EK1002) for Western blot, and HRP Conjugated anti-Rabbit IgG Super Vision Assay Kit (SV0002-1) for IHC(P).

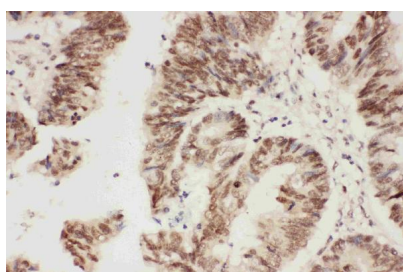
Cross Reactivity	No cross-reactivity with other proteins
Isotype	Rabbit IgG
Form	Lyophilized
Concentration	Adding 0.2 ml of distilled water will yield a concentration of 500 ug/ml.
Purification	Immunogen affinity purified.
Suggested Dilutions	<p>Dilute the sample so that the expected range of concentrations fall within the detection range of this kit.</p> <p>If the expected range of concentration is unknown, a pilot test should be conducted to decide the optimal dilution ratio for your samples.</p> <p>Some PubMed article(s) citing the expression level of this target are as follows:</p> <p>Boster Bio's internal QC testing used:</p> <p>Immunohistochemistry (Paraffin-embedded Section), 0.5-1ug/ml, Human, Rat, Mouse, By Heat</p> <p>Western blot, 0.1-0.5ug/ml, Human, Rat, Mouse</p>

Anti-ALK Antibody (PA1741) Images

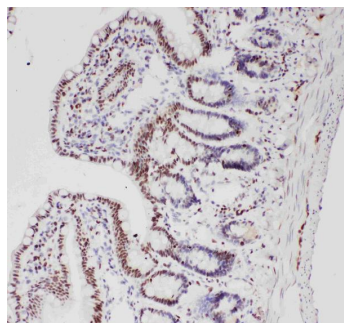


Anti-ALK antibody, PA1741, Western blotting

Lane 1: Rat Brain Tissue Lysate
Lane 2: Rat Testis Tissue Lysate
Lane 3: U87 Cell Lysate
Lane 4: HELA Cell Lysate
Lane 5: COLO320 Cell Lysate
Lane 6: JURKAT Cell Lysate



Anti-ALK antibody, PA1741, IHC(P)
IHC(P): Human Rectal Cancer Tissue



Anti-ALK antibody, PA1741, IHC(P)
IHC(P): Rat Intestine Tissue

Submit a product review to Biocompare.com

Submit a review of this product to Biocompare.com to receive a \$20 Amazon.com giftcard! Your reviews help your fellow scientists make the right decisions. Thank you for your contribution.



Anti-ALK Antibody