

Anti-GRO alpha/CXCL1 Antibody

Catalog Number: PA1760

About CXCL1

CXCL1 (Chemokine, CXC motif, Ligand 1), also called GRO1, SCYB1, GROA or MGSA, is a small cytokine belonging to the CXC chemokine family that was previously called GRO1 oncogene, GROalpha, KC, Neutrophil-activating protein 3 (NAP-3) and melanoma growth stimulating activity, alpha (MSGA-alpha). In humans, this protein is encoded by the CXCL1 gene. The CXCL1 gene is mapped on 4q13.3. CXCL1 is secreted by human melanoma cells, has mitogenic properties and is implicated in melanoma pathogenesis. CXCL1 is expressed by macrophages, neutrophils and epithelial cells, and has neutrophil chemoattractant activity. CXCL1 plays a role in spinal cord development by inhibiting the migration of oligodendrocyte precursors and is involved in the processes of angiogenesis, inflammation, wound healing, and tumorigenesis. Signaling through Cxcr2, Cxcl1 inhibited oligodendrocyte precursor migration. The migrational arrest was rapid, reversible, and concentration dependent, and it reflected enhanced cell/substrate interactions. White matter expression of Cxcl1 was temporospatially regulated. Others contribute to aggressive growth selectivity in the lung. Among the lung metastasis signature genes identified, several, including CXCL1, were functionally validated.

Overview

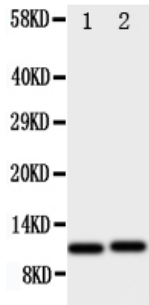
Product Name	Anti-GRO alpha/CXCL1 Antibody
Reactive Species	Human
Description	Boster Bio Anti-GRO alpha/CXCL1 Antibody catalog # PA1760. Tested in WB applications. This antibody reacts with Human.
Application	WB
Clonality	Polyclonal
Formulation	Each vial contains 5mg BSA, 0.9mg NaCl, 0.2mg Na2HPO4, 0.05mg Thimerosal, 0.05mg NaN3.
Storage Instructions	Store at -20°C for one year from date of receipt. After reconstitution, at 4°C for one month. It can also be aliquotted and stored frozen at -20°C for six months. Avoid repeated freeze-thaw cycles.
Host	Rabbit
Uniprot ID	P09341

Technical Details

Immunogen	A synthetic peptide corresponding to a sequence at the C-terminus of human GRO alpha.
Predicted Reactive Species	Hamster
Recommended Detection Systems	Boster recommends Enhanced Chemiluminescent Kit with anti-Rabbit IgG (EK1002) for Western blot.
Cross Reactivity	No cross-reactivity with other proteins
Isotype	Rabbit IgG

Form	Lyophilized
Concentration	Adding 0.2 ml of distilled water will yield a concentration of 500 ug/ml.
Purification	Immunogen affinity purified.
Suggested Dilutions	<p>Dilute the sample so that the expected range of concentrations fall within the detection range of this kit.</p> <p>If the expected range of concentration is unknown, a pilot test should be conducted to decide the optimal dilution ratio for your samples.</p> <p>Some PubMed article(s) citing the expression level of this target are as follows:</p> <p>Boster Bio's internal QC testing used:</p> <p>Western blot, 0.1-0.5ug/ml, Human</p>

Anti-GRO alpha/CXCL1 Antibody (PA1760) Images



Anti-GRO alpha antibody, PA1760, Western blotting
All lanes: Anti GRO alpha (PA1760) at 0.5ug/ml
Lane 1: HELA Whole Cell Lysate at 40ug
Lane 2: JURKAT Whole Cell Lysate at 40ug
Predicted bind size: 11KD
Observed bind size: 11KD

5 Publications Citing This Product

1. PubMed ID: 30606213, Crosstalk between NFkappaB-dependent astrocytic CXCL1 and neuron CXCR2 plays a role in descending pain facilitation Huadong Ni 1, Yungong Wang 2, Kang An 3, Qianying Liu 1, Longsheng Xu 1, Chunyan Zhu 1, Housheng Deng 1, Qiuli He 1, Tingting Wang 1, Miao Xu
2. PubMed ID: 24852102, Chemokine CXCL1 enhances inflammatory pain and increases NMDA receptor activity and COX-2 expression in spinal cord neurons via activation of CXCR2
3. PubMed ID: 23831863, Zhang Zj, Cao DI, Zhang X, Ji Rr, Gao Yj. Pain. 2013 Oct;154(10):2185-97. Doi: 10.1016/J.Pain.2013.07.002. Epub 2013 Jul 4. Chemokine Contribution To Neuropathic Pain: Respective Induction Of Cxcl1 And Cxcr2 In Spinal Cord Astrocytes And Neurons.

Visit bosterbio.com/anti-gro-alpha-antibody-pa1760-boster.html to see all 5 publications.

Submit a product review to Biocompare.com

Submit a review of this product to Biocompare.com to receive a \$20 Amazon.com giftcard! Your reviews help your fellow scientists make the right decisions. Thank you for your contribution.



Anti-GRO alpha/CXCL1 Antibody