

## Anti-SNRPN Antibody

Catalog Number: PA1775

### About SNRPN

SNRPN (Small Nuclear Ribonucleoprotein Polypeptide N), also called SMN, is a bicistronic imprinted gene that encodes 2 polypeptides, the SmN splicing factor, which is involved in RNA processing, and the SNRPN upstream reading frame (SNURF) polypeptide. The protein encoded by this gene is one polypeptide of a small nuclear ribonucleoprotein complex and belongs to the snRNP SMB/SMN family. SNRPN also encodes a long alternatively spliced transcript containing several small nucleolar RNAs (snoRNAs) and extends downstream to partially overlap the UBE3A gene in the antisense orientation. PWS arises from loss of function of genes in this region expressed exclusively from the paternal chromosome, suggesting that SNRPN may play a role in its etiology. The SNRPN gene is mapped on 15q11.2. Analysis of maternal DNA and of SNRPN cDNA confirmed that the maternal allele is not expressed in fetal brain and heart. Deletions in the transcription unit of the imprinted SNRPN gene occur in patients who have PWS or Angelman syndrome because of a parental imprint switch failure in this chromosomal domain.

### Overview

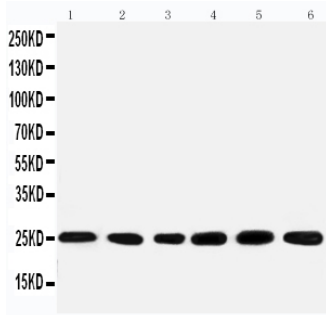
Product Name	Anti-SNRPN Antibody
Reactive Species	Human, Mouse, Rat
Description	Boster Bio Anti-SNRPN Antibody catalog # PA1775. Tested in IHC, ICC, WB applications. This antibody reacts with Human, Mouse, Rat.
Application	IHC, ICC, WB
Clonality	Polyclonal
Formulation	Each vial contains 5mg BSA, 0.9mg NaCl, 0.2mg Na2HPO4, 0.05mg Thimerosal, 0.05mg NaN3.
Storage Instructions	Store at -20°C for one year from date of receipt. After reconstitution, at 4°C for one month. It can also be aliquotted and stored frozen at -20°C for six months. Avoid repeated freeze-thaw cycles.
Host	Rabbit
Uniprot ID	P63162

### Technical Details

Immunogen	A synthetic peptide corresponding to a sequence at the N-terminus of human SNRPN, identical to the related rat and mouse sequences.
Predicted Reactive Species	Hamster
Recommended Detection Systems	Boster recommends Enhanced Chemiluminescent Kit with anti-Rabbit IgG (EK1002) for Western blot, and HRP Conjugated anti-Rabbit IgG Super Vision Assay Kit (SV0002-1) for IHC(P) and ICC.
Cross Reactivity	No cross-reactivity with other proteins
Isotype	Rabbit IgG

Form	Lyophilized
Concentration	Adding 0.2 ml of distilled water will yield a concentration of 500 ug/ml.
Purification	Immunogen affinity purified.
Suggested Dilutions	<p>Dilute the sample so that the expected range of concentrations fall within the detection range of this kit.</p> <p>If the expected range of concentration is unknown, a pilot test should be conducted to decide the optimal dilution ratio for your samples.</p> <p>Some PubMed article(s) citing the expression level of this target are as follows:</p> <p>Boster Bio's internal QC testing used:</p> <p>Immunocytochemistry , 0.5-1ug/ml, Human, Mouse, Rat</p> <p>Immunohistochemistry (Paraffin-embedded Section), 0.5-1ug/ml, Human, Rat, Mouse, By Heat</p> <p>Western blot, 0.1-0.5ug/ml, Human, Rat, Mouse</p>

## Anti-SNRPN Antibody (PA1775) Images



Anti-SNRPN antibody, PA1775, Western blotting

Lane 1: Rat kidney Tissue Lysate

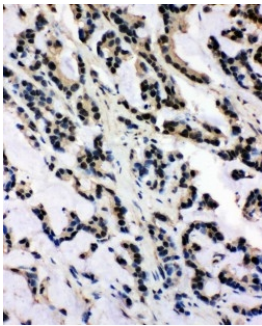
Lane 2: U87 Cell Lysate

Lane 3: U87 Cell Lysate

Lane 4: HELA Cell Lysate

Lane 5: HMY Cell Lysate

Lane 6: NEUR Cell Lysate



Anti-SNRPN antibody, PA1775, IHC(P)

IHC(P): Human Intestinal Cancer Tissue



Anti-SNRPN antibody, PA1775, ICC

ICC: HELA Cell

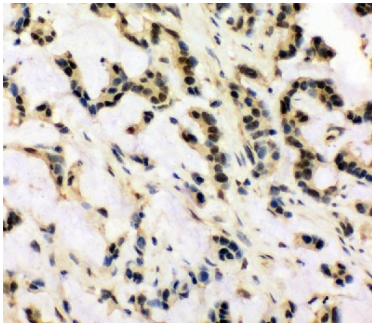
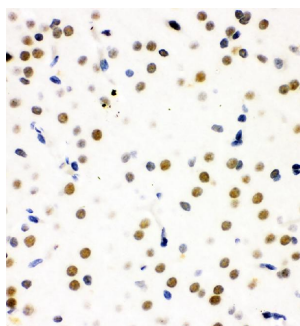


Figure 4. IHC analysis of SNRPN using anti-SNRPN antibody (PA1775).

SNRPN was detected in paraffin-embedded section of human intestinal cancer tissue. Heat mediated antigen retrieval was performed in citrate buffer (pH6, epitope retrieval solution) for 20 mins. The tissue section was blocked with 10% goat serum. The tissue section was then incubated with 1ug/ml rabbit anti-SNRPN Antibody (PA1775) overnight at 4°C. Biotinylated goat anti-rabbit IgG was used as secondary antibody and incubated for 30 minutes at 37°C. The tissue section was developed using Streptavidin-Biotin-Complex (SABC)(Catalog # SA1022) with DAB as the chromogen.

Figure 5. IHC analysis of SNRPN using anti-SNRPN antibody (PA1775).

SNRPN was detected in paraffin-embedded section of rat brain tissue. Heat mediated antigen retrieval was performed



in citrate buffer (pH6, epitope retrieval solution) for 20 mins. The tissue section was blocked with 10% goat serum. The tissue section was then incubated with 1ug/ml rabbit anti-SNRPN Antibody (PA1775) overnight at 4°C. Biotinylated goat anti-rabbit IgG was used as secondary antibody and incubated for 30 minutes at 37°C. The tissue section was developed using Streptavidin-Biotin-Complex (SABC)(Catalog # SA1022) with DAB as the chromogen.

## Submit a product review to Biocompare.com

Submit a review of this product to Biocompare.com to receive a \$20 Amazon.com giftcard! Your reviews help your fellow scientists make the right decisions. Thank you for your contribution.



Anti-SNRPN Antibody