

## Anti-LIM and SH3 domain protein 1 LASP1 Antibody

Catalog Number: PA1791

### About LASP1

LASP1 (LIM and SH3 domain protein 1), also known as LASP1, is a protein that in humans is encoded by the LASP1 gene. This gene encodes a member of a LIM protein subfamily which is characterized by a LIM motif and a domain of Src homology region 3. This protein functions as an actin-binding protein and possibly in cytoskeletal organization. LASP1 has been shown to interact with Zyxin. Tomasetto et al. (1995) mapped the LASP1 gene to chromosome 17q11-q21.3 by radioactive in situ hybridization. Northern blot analysis revealed that LASP1 mRNA was expressed at a basal level in all normal tissues examined and overexpressed in 8% of primary breast cancers. In most of these cancers, LASP1 and ERBB2 were simultaneously overexpressed.

### Overview

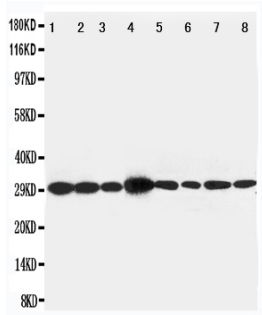
Product Name	Anti-LIM and SH3 domain protein 1 LASP1 Antibody
Reactive Species	Human, Mouse, Rat
Description	Boster Bio Anti-LIM and SH3 domain protein 1 LASP1 Antibody catalog # PA1791. Tested in IHC, ICC, WB applications. This antibody reacts with Human, Mouse, Rat.
Application	IHC, ICC, WB
Clonality	Polyclonal
Formulation	Each vial contains 5mg BSA, 0.9mg NaCl, 0.2mg Na <sub>2</sub> HPO <sub>4</sub> , 0.05mg Thimerosal, 0.05mg NaN <sub>3</sub> .
Storage Instructions	Store at -20°C for one year from date of receipt. After reconstitution, at 4°C for one month. It can also be aliquotted and stored frozen at -20°C for six months. Avoid repeated freeze-thaw cycles.
Host	Rabbit
Uniprot ID	Q14847

### Technical Details

Immunogen	A synthetic peptide corresponding to a sequence at the N-terminus of human LASP1, identical to the related rat sequence and different from the related mouse sequence by one amino acid.
Predicted Reactive Species	Hamster
Recommended Detection Systems	Boster recommends Enhanced Chemiluminescent Kit with anti-Rabbit IgG (EK1002) for Western blot, and HRP Conjugated anti-Rabbit IgG Super Vision Assay Kit (SV0002-1) for IHC(P) and ICC.
Cross Reactivity	No cross-reactivity with other proteins
Isotype	Rabbit IgG
Form	Lyophilized

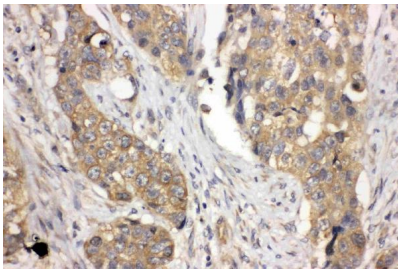
Concentration	Adding 0.2 ml of distilled water will yield a concentration of 500 ug/ml.
Purification	Immunogen affinity purified.
Suggested Dilutions	<p>Dilute the sample so that the expected range of concentrations fall within the detection range of this kit.</p> <p>If the expected range of concentration is unknown, a pilot test should be conducted to decide the optimal dilution ratio for your samples.</p> <p>Some PubMed article(s) citing the expression level of this target are as follows:</p> <p>Boster Bio's internal QC testing used:</p> <p>Immunocytochemistry , 0.5-1ug/ml, Human, Mouse, Rat</p> <p>Immunohistochemistry (Paraffin-embedded Section), 0.5-1ug/ml, Human, Mouse, Rat, By Heat</p> <p>Western blot, 0.1-0.5ug/ml, Human, Mouse, Rat</p>

## Anti-LIM and SH3 domain protein 1 LASP1 Antibody (PA1791) Images



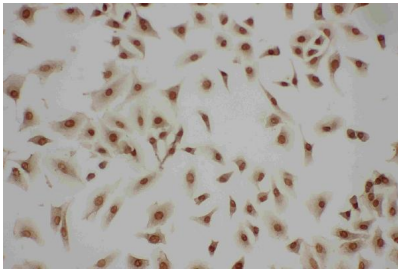
Anti-LASP1 antibody, PA1791, Western blotting

Lane 1: Rat Liver Tissue Lysate  
Lane 2: Rat Spleen Tissue Lysate  
Lane 3: Rat Intestine Tissue Lysate  
Lane 4: JURKAT Cell Lysate  
Lane 5: MCF-7 Cell Lysate  
Lane 6: A431 Cell Lysate  
Lane 7: HELA Cell Lysate  
Lane 8: 293T Cell Lysate



Anti-LASP1 antibody, PA1791, IHC(P)

IHC(P): Human Lung Cancer Tissue



Anti-LASP1 antibody, PA1791, ICC

ICC: A549 Cell

## 1 Publications Citing This Product

1. PubMed ID: 32473899, Lu C,Fu L,Qian X,Dou L,Cang S.Knockdown of circular RNA circ-FARSA restricts colorectal cancer cell growth through regulation of miR-330-5p/LASP1 axis.Arch Biochem Biophys.2020 Aug 15;689:108434.doi:10.1016/j.abb.2020.108434.Epub 2020 May 29.PMID:32473899

Visit [bosterbio.com/anti-lasp1-antibody-pa1791-boster.html](https://bosterbio.com/anti-lasp1-antibody-pa1791-boster.html) to see all 1 publications.

## Submit a product review to Biocompare.com

Submit a review of this product to Biocompare.com to receive a \$20 Amazon.com giftcard! Your reviews help your fellow scientists make the right decisions. Thank you for your contribution.



Anti-LIM and SH3 domain protein 1 LASP1 Antibody