

Anti-CBL Antibody

Catalog Number: PA1800

About CBL

CBL (Cbl proto-oncogene) is also known as C-CBL, RNF55, CBL2 and E3 ubiquitin protein ligase. Wei et al. (1990) mapped the CBL gene to chromosome 11q23.3-qter by molecular characterization of the breakpoints in 2 somatic cell hybrids. The encoded protein is one of the enzymes required for targeting substrates for degradation by the proteasome. This protein mediates the transfer of ubiquitin from ubiquitin conjugating enzymes (E2) to specific substrates. This protein also contains an N-terminal phosphotyrosine binding domain that allows it to interact with numerous tyrosine-phosphorylated substrates and target them for proteasome degradation. As such it functions as a negative regulator of many signal transduction pathways. This gene has been found to be mutated or translocated in many cancers including acute myeloid leukaemia. Mutations in this gene are also the cause of Noonan syndrome-like disorder.

Overview

Product Name	Anti-CBL Antibody
Reactive Species	Human, Mouse, Rat
Description	Boster Bio Anti-CBL Antibody catalog # PA1800. Tested in WB applications. This antibody reacts with Human, Mouse, Rat.
Application	WB
Clonality	Polyclonal
Formulation	Each vial contains 5mg BSA, 0.9mg NaCl, 0.2mg Na2HPO4, 0.05mg Thimerosal, 0.05mg NaN3.
Storage Instructions	Store at -20°C for one year from date of receipt. After reconstitution, at 4°C for one month. It can also be aliquotted and stored frozen at -20°C for six months. Avoid repeated freeze-thaw cycles.
Host	Rabbit
Uniprot ID	P22681

Technical Details

Immunogen	A synthetic peptide corresponding to a sequence at the C-terminus of human CBL, identical to the related rat and mouse sequences.
Predicted Reactive Species	Chicken
Recommended Detection Systems	Boster recommends Enhanced Chemiluminescent Kit with anti-Rabbit IgG (EK1002) for Western blot.
Cross Reactivity	No cross-reactivity with other proteins
Isotype	Rabbit IgG

Form	Lyophilized
Concentration	Adding 0.2 ml of distilled water will yield a concentration of 500 ug/ml.
Purification	Immunogen affinity purified.
Suggested Dilutions	<p>Dilute the sample so that the expected range of concentrations fall within the detection range of this kit.</p> <p>If the expected range of concentration is unknown, a pilot test should be conducted to decide the optimal dilution ratio for your samples.</p> <p>Some PubMed article(s) citing the expression level of this target are as follows:</p> <p>Boster Bio's internal QC testing used:</p> <p>Western blot, 0.1-0.5ug/ml, Human, Mouse, Rat</p>

Anti-CBL Antibody (PA1800) Images

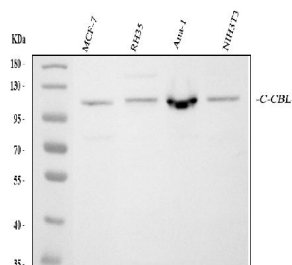


Figure 1. Western blot analysis of CBL using anti-CBL antibody (PA1800).

Electrophoresis was performed on a 5-20% SDS-PAGE gel at 70V (Stacking gel) / 90V (Resolving gel) for 2-3 hours. The sample well of each lane was loaded with 30 ug of sample under reducing conditions.

Lane 1: human MCF-7 whole cell lysates,

Lane 2: rat RH35 whole cell lysates,

Lane 3: mouse ANA-1 whole cell lysates,

Lane 4: mouse NIH/3T3 whole cell lysates.

After electrophoresis, proteins were transferred to a nitrocellulose membrane at 150 mA for 50-90 minutes.

Blocked the membrane with 5% non-fat milk/TBS for 1.5

hour at RT. The membrane was incubated with rabbit anti-

CBL antigen affinity purified polyclonal antibody (Catalog #

PA1800) at 0.5 ug/mL overnight at 4°C, then washed with

TBS-0.1%Tween 3 times with 5 minutes each and probed

with a goat anti-rabbit IgG-HRP secondary antibody at a

dilution of 1:5000 for 1.5 hour at RT. The signal is developed

using an Enhanced Chemiluminescent detection (ECL) kit

(Catalog # EK1002) with Tanon 5200 system. A specific

band was detected for CBL at approximately 120 kDa. The

expected band size for CBL is at 120 kDa.

Submit a product review to Biocompare.com

Submit a review of this product to Biocompare.com to receive a \$20 Amazon.com giftcard! Your reviews help your fellow scientists make the right decisions. Thank you for your contribution.



Anti-CBL Antibody