

Anti-Rel B/RELB Antibody

Catalog Number: PA1803

About RELB

RELB (v-rel reticuloendotheliosis viral oncogene homolog B) is also known as IREL. The International Radiation Hybrid Mapping Consortium assigned the RELB gene to chromosome 19. By RT-PCR and immunocytochemical analyses, Clark et al. (1999) showed that RELB expression correlated with dendritic cell activation. NF-kappa-B-inducing kinase is required for osteoclastogenesis in response to pathologic stimuli. Vaira et al. (2008) found that overexpression of Relb, but not Rela, rescued differentiation of mouse Nik -/- osteoclast precursors, indicating that blockade of the alternative NF-kappa-B pathway, rather than the classical NF-kappa-B pathway, is responsible for the osteoclastogenic defect in the absence of Nik. Using Relb -/- mice, they showed that Relb itself was required for Rankl-induced osteoclastogenesis in vitro and for TNF-induced bone resorption in vivo. Both Relb -/- and Nik -/- mice were resistant to tumor-mediated osteolysis. Vaira et al. (2008) concluded that the alternative NF-kappa-B pathway, via RELB, plays an essential and unique role in RANKL signaling toward osteoclast development.

Overview

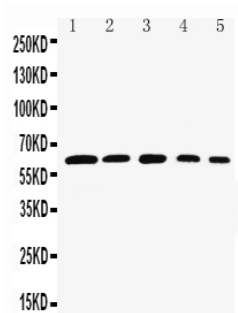
| | |
|----------------------|---|
| Product Name | Anti-Rel B/RELB Antibody |
| Reactive Species | Human, Mouse, Rat |
| Description | Boster Bio Anti-Rel B/RELB Antibody catalog # PA1803. Tested in WB applications. This antibody reacts with Human, Mouse, Rat. |
| Application | WB |
| Clonality | Polyclonal |
| Formulation | Each vial contains 5mg BSA, 0.9mg NaCl, 0.2mg Na2HPO4, 0.05mg Thimerosal, 0.05mg NaN3. |
| Storage Instructions | Store at -20°C for one year from date of receipt. After reconstitution, at 4°C for one month. It can also be aliquotted and stored frozen at -20°C for six months. Avoid repeated freeze-thaw cycles. |
| Host | Rabbit |
| Uniprot ID | Q01201 |

Technical Details

| | |
|-------------------------------|--|
| Immunogen | A synthetic peptide corresponding to a sequence at the C-terminus of human Rel B, identical to the related mouse sequence. |
| Predicted Reactive Species | Hamster |
| Recommended Detection Systems | Boster recommends Enhanced Chemiluminescent Kit with anti-Rabbit IgG (EK1002) for Western blot. |
| Cross Reactivity | No cross-reactivity with other proteins |
| Isotype | Rabbit IgG |

| | |
|---------------------|--|
| Form | Lyophilized |
| Concentration | Adding 0.2 ml of distilled water will yield a concentration of 500 ug/ml. |
| Purification | Immunogen affinity purified. |
| Suggested Dilutions | <p>Dilute the sample so that the expected range of concentrations fall within the detection range of this kit.</p> <p>If the expected range of concentration is unknown, a pilot test should be conducted to decide the optimal dilution ratio for your samples.</p> <p>Some PubMed article(s) citing the expression level of this target are as follows:</p> <p>Boster Bio's internal QC testing used:</p> <p>Western blot, 0.1-0.5ug/ml, Human, Mouse, Rat</p> |

Anti-Rel B/RELB Antibody (PA1803) Images



Anti-Rel B antibody, PA1803, Western blotting

Lane 1: Rat Testis Tissue Lysate

Lane 2: HELA Cell Lysate

Lane 3: NIH3T3 Cell Lysate

Lane 4: RAJI Cell Lysate

Lane 5: HEPA Cell Lysate

Submit a product review to Biocompare.com

Submit a review of this product to Biocompare.com to receive a \$20 Amazon.com giftcard! Your reviews help your fellow scientists make the right decisions. Thank you for your contribution.



Anti-Rel B/RELB Antibody