

## Anti-Kallikrein 10/KLK10 Antibody

Catalog Number: PA1821

### About KLK10

KLK10 (kallikrein-related peptidase 10) also known as kallikrein 10, PRSSL1 or NES1, belongs to the kallikrein subfamily of serine proteases, which are involved in a variety of enzymatic processes. Its encoded protein is secreted and may play a role in suppression of tumorigenesis in breast and prostate cancers. KLK10 also contains 12 conserved cysteines in its protease domain that are expected to form 6 disulfide bonds, as in other serine proteases. RT-PCR detected variable levels of KLK10 expression in nearly all of the 35 adult and fetal tissues examined. The KLK10 gene contains 6 exons, the first of which is noncoding. By fluorescence in situ hybridization, Polikoff et al. (1997) mapped the PRSSL1 gene to 19q13.3. By genomic sequence analysis, Gan et al. (2000) mapped the KLK10 gene within the KLK gene cluster on chromosome 19q13. This cluster includes 13 KLK genes and 5 pseudogenes.

### Overview

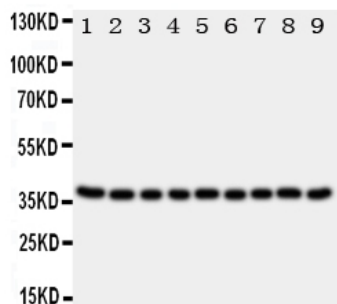
Product Name	Anti-Kallikrein 10/KLK10 Antibody
Reactive Species	Human, Rat
Description	Boster Bio Anti-Kallikrein 10/KLK10 Antibody catalog # PA1821. Tested in WB applications. This antibody reacts with Human, Rat.
Application	WB
Clonality	Polyclonal
Formulation	Each vial contains 5mg BSA, 0.9mg NaCl, 0.2mg Na2HPO4, 0.05mg Thimerosal, 0.05mg NaN3.
Storage Instructions	Store at -20°C for one year from date of receipt. After reconstitution, at 4°C for one month. It can also be aliquotted and stored frozen at -20°C for six months. Avoid repeated freeze-thaw cycles.
Host	Rabbit
Uniprot ID	O43240

### Technical Details

Immunogen	A synthetic peptide corresponding to a sequence at the C-terminus of human Kallikrein 10.
Predicted Reactive Species	Bovine
Recommended Detection Systems	Boster recommends Enhanced Chemiluminescent Kit with anti-Rabbit IgG (EK1002) for Western blot.
Cross Reactivity	No cross-reactivity with other proteins
Isotype	Rabbit IgG
Form	Lyophilized

Concentration	Adding 0.2 ml of distilled water will yield a concentration of 500 ug/ml.
Purification	Immunogen affinity purified.
Suggested Dilutions	<p>Dilute the sample so that the expected range of concentrations fall within the detection range of this kit.</p> <p>If the expected range of concentration is unknown, a pilot test should be conducted to decide the optimal dilution ratio for your samples.</p> <p>Some PubMed article(s) citing the expression level of this target are as follows:</p> <p>Boster Bio's internal QC testing used:</p> <p>Western blot, 0.1-0.5ug/ml, Human, Rat</p>

## Anti-Kallikrein 10/KLK10 Antibody (PA1821) Images



Anti-Kallikrein 10 antibody, PA1821, Western blotting

All lanes: Anti Kallikrein 10 (PA1821) at 0.5ug/ml

Lane 1: Rat Ovary Tissue Lysate at 50ug

Lane 2: Rat Testis Tissue Lysate at 50ug

Lane 3: Rat Spleen Tissue Lysate at 50ug

Lane 4: Rat Liver Tissue Lysate at 50ug

Lane 5: 22RV Whole Cell Lysate at 40ug

Lane 6: SROV Whole Cell Lysate at 40ug

Lane 7: HELA Whole Cell Lysate at 40ug

Lane 8: MCF-7 Whole Cell Lysate at 40ug

Lane 9: MM231 Whole Cell Lysate at 40ug

Predicted bind size: 37KD

Observed bind size: 37KD

## Submit a product review to Biocompare.com

Submit a review of this product to Biocompare.com to receive a \$20 Amazon.com giftcard! Your reviews help your fellow scientists make the right decisions. Thank you for your contribution.



Anti-Kallikrein 10/KLK10 Antibody