

Anti-Myoglobin/MB Antibody

Catalog Number: PA1827

About Mb

Myoglobin (MB) also known as PVALB, is a single-chain globular protein of 153 or 154 amino acids, containing a heme (iron-containing porphyrin) prosthetic group in the center around which the remaining apoprotein folds. It is a member of the globin superfamily and is expressed in skeletal and cardiac muscles. This gene is mapped to chromosome 22q11-q13. Myoglobin is released from damaged muscle tissue (rhabdomyolysis), which has very high concentrations of myoglobin. The released myoglobin is filtered by the kidneys but is toxic to the renal tubular epithelium and so may cause acute renal failure.

Overview

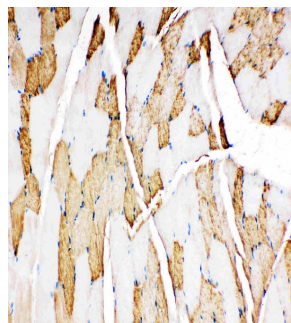
Product Name	Anti-Myoglobin/MB Antibody
Reactive Species	Mouse, Rat
Description	Boster Bio Anti-Myoglobin/MB Antibody catalog # PA1827. Tested in IHC, WB applications. This antibody reacts with Mouse, Rat.
Application	IHC, WB
Clonality	Polyclonal
Formulation	Each vial contains 5mg BSA, 0.9mg NaCl, 0.2mg Na ₂ HPO ₄ , 0.05mg Thimerosal, 0.05mg NaN ₃ .
Storage Instructions	Store at -20°C for one year from date of receipt. After reconstitution, at 4°C for one month. It can also be aliquotted and stored frozen at -20°C for six months. Avoid repeated freeze-thaw cycles.
Host	Rabbit
Uniprot ID	P04247

Technical Details

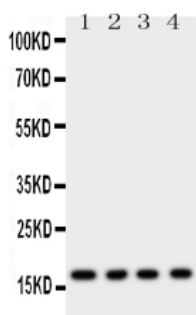
Immunogen	A synthetic peptide corresponding to a sequence at the C-terminus of mouse Myoglobin, identical to the related rat sequence.
Predicted Reactive Species	Hamster
Recommended Detection Systems	Boster recommends Enhanced Chemiluminescent Kit with anti-Rabbit IgG (EK1002) for Western blot, and HRP Conjugated anti-Rabbit IgG Super Vision Assay Kit (SV0002-1) for IHC(P).
Cross Reactivity	No cross-reactivity with other proteins
Isotype	Rabbit IgG
Form	Lyophilized
Concentration	Adding 0.2 ml of distilled water will yield a concentration of 500 ug/ml.

Purification	Immunogen affinity purified.
Suggested Dilutions	<p>Dilute the sample so that the expected range of concentrations fall within the detection range of this kit.</p> <p>If the expected range of concentration is unknown, a pilot test should be conducted to decide the optimal dilution ratio for your samples.</p> <p>Some PubMed article(s) citing the expression level of this target are as follows:</p> <p>Boster Bio's internal QC testing used:</p> <p>Immunohistochemistry (Paraffin-embedded Section), 0.5-1ug/ml, Rat, Mouse, By Heat</p> <p>Western blot, 0.1-0.5ug/ml, Rat, Mouse</p>

Anti-Myoglobin/MB Antibody (PA1827) Images



Anti-Myoglobin antibody, PA1827, IHC(P)
IHC(P): Rat Skeletal Muscle Tissue



Anti-Myoglobin antibody, PA1827, Western blotting
All lanes: Anti Myoglobin (PA1827) at 0.5ug/ml
Lane 1: Rat Skeletal Muscle Tissue Lysate at 50ug
Lane 2: Rat Heart Tissue Lysate at 50ug
Lane 3: Rat Liver Tissue Lysate at 50ug
Lane 4: Rat Intestine Tissue Lysate at 50ug
Predicted bind size: 17KD
Observed bind size: 17KD

2 Publications Citing This Product

1. PubMed ID: 25659681, Xu H, He J, Zhang Y, Fan L, Zhao Y, Xu T, Nie Z, Li X, Huang Z, Lu B, Xu P. Carbohydr Polym. 2015 May 5;121:132-9. Doi: 10.1016/J.Carbpol.2014.12.057. Epub 2015 Jan 3. Synthesis And In Vitro Evaluation Of A Hyaluronic Acid-Quantum Dots-Melphalan C...
2. PubMed ID: 21586274, Peng L, Yanjiao M, Ai-Guo W, Pengtao G, Jianhua L, Ju Y, Hongsheng O, Xichen Z. Biochem Biophys Res Commun. 2011 Jun 3;409(2):344-9. Doi: 10.1016/J.Bbrc.2011.05.021. Epub 2011 May 8. A Fine Balance Between Ccn1 And Timp1 Contributes To The Develo...

Visit bosterbio.com/anti-myoglobin-antibody-pa1827-boster.html to see all 2 publications.

Submit a product review to Biocompare.com

Submit a review of this product to Biocompare.com to receive a \$20 Amazon.com giftcard! Your reviews help your fellow scientists make the right decisions. Thank you for your contribution.



Anti-Myoglobin/MB Antibody