

Anti-LOX 1/OLR1 Antibody

Catalog Number: PA1833

About OLR1

OLR1 (oxidized low density lipoprotein (lectin-like) receptor 1) also called CLEC8A, LOX-1, SCARE1, is a receptor protein which belongs to the C-type lectin superfamily. The OLR1 gene encodes a cell-surface endocytosis receptor for oxidized low density lipoprotein (OxLDL). The OLR1 gene is mapped on 12p13.2. Incubation of the cells with LDL had no effect on LOX1 expression, but incubation with OxLDL resulted in a dose-dependent increase in LOX1 mRNA and protein expression; however, very high concentrations of OxLDL caused a decrease in OxLDL expression, perhaps indicating toxic effects on endothelial cells. LOX1 was also expressed in macrophages, but not in vascular smooth muscle cells. The findings suggested a role for LOX1 in the pathophysiology of atherosclerotic cardiovascular disease. LOX1 expression was detected in all choroidal neovascular membranes, regardless of structure, whereas there was no evidence of LOX1 within the posterior segments of normal eyes. LOX1 plays an active role in the pathogenesis of choroidal neovascularization, especially in ARMD.

Overview

Product Name	Anti-LOX 1/OLR1 Antibody
Reactive Species	Human
Description	Boster Bio Anti-LOX 1/OLR1 Antibody catalog # PA1833. Tested in WB applications. This antibody reacts with Human.
Application	WB
Clonality	Polyclonal
Formulation	Each vial contains 5mg BSA, 0.9mg NaCl, 0.2mg Na2HPO4, 0.05mg Thimerosal, 0.05mg NaN3.
Storage Instructions	Store at -20°C for one year from date of receipt. After reconstitution, at 4°C for one month. It can also be aliquotted and stored frozen at -20°C for six months. Avoid repeated freeze-thaw cycles.
Host	Rabbit
Uniprot ID	P78380

Technical Details

Immunogen	A synthetic peptide corresponding to a sequence in the middle region of human LOX 1, different from the related rat sequence by three amino acids.
Predicted Reactive Species	Rabbit
Recommended Detection Systems	Boster recommends Enhanced Chemiluminescent Kit with anti-Rabbit IgG (EK1002) for Western blot.
Cross Reactivity	No cross-reactivity with other proteins
Isotype	Rabbit IgG

Form	Lyophilized
Concentration	Adding 0.2 ml of distilled water will yield a concentration of 500 ug/ml.
Purification	Immunogen affinity purified.
Suggested Dilutions	<p>Dilute the sample so that the expected range of concentrations fall within the detection range of this kit.</p> <p>If the expected range of concentration is unknown, a pilot test should be conducted to decide the optimal dilution ratio for your samples.</p> <p>Some PubMed article(s) citing the expression level of this target are as follows:</p> <p>Boster Bio's internal QC testing used:</p> <p>Western blot, 0.1-0.5ug/ml, Human</p>

Anti-LOX 1/OLR1 Antibody (PA1833) Images

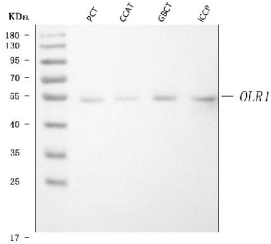


Figure 1. Western blot analysis of LOX 1/OLR1 using anti-LOX 1/OLR1 antibody (PA1833).

Electrophoresis was performed on a 5-20% SDS-PAGE gel at 70V (Stacking gel) / 90V (Resolving gel) for 2-3 hours. The sample well of each lane was loaded with 30 ug of sample under reducing conditions.

Lane 1: human prostatic carcinoma tissue (PCT) lysates,
Lane 2: human cervical carcinoma tissue (CCAT) lysates,
Lane 3: human gallbladder carcinoma tissue (GBCT) lysates,
Lane 4: human intrahepatic cholangiocarcinoma paracancerous tissue (ICCP) lysates.

After electrophoresis, proteins were transferred to a nitrocellulose membrane at 150 mA for 50-90 minutes. Blocked the membrane with 5% non-fat milk/TBS for 1.5 hour at RT. The membrane was incubated with rabbit anti-LOX 1/OLR1 antigen affinity purified polyclonal antibody (Catalog # PA1833) at 0.5 ug/mL overnight at 4°C, then washed with TBS-0.1%Tween 3 times with 5 minutes each and probed with a goat anti-rabbit IgG-HRP secondary antibody at a dilution of 1:5000 for 1.5 hour at RT. The signal is developed using an Enhanced Chemiluminescent detection (ECL) kit (Catalog # EK1002) with Tanon 5200 system. A specific band was detected for LOX 1/OLR1 at approximately 48-52 kDa. The expected band size for LOX 1/OLR1 is at 31 kDa.

Submit a product review to Biocompare.com

Submit a review of this product to Biocompare.com to receive a \$20 Amazon.com giftcard! Your reviews help your fellow scientists make the right decisions. Thank you for your contribution.



Anti-LOX 1/OLR1 Antibody