

Anti-ErbB 3/ERBB3 Antibody

Catalog Number: PA1880

About ERBB3

ERBB3 (V-erb-b2 avian erythroblastic leukemia viral oncogene homolog 3) also known as ONCOGENE ERBB3 or HER3, is an enzyme that in humans is encoded by the ERBB3 gene. This gene encodes a member of the epidermal growth factor receptor (EGFR) family of receptor tyrosine kinases. This membrane-bound protein has a neuregulin binding domain but not an active kinase domain. By in situ hybridization, Kraus et al. (1989) mapped the ERBB3 gene to chromosome 12q13. Carraway et al. (1994) demonstrated that ERBB3 is a receptor for heregulin and is capable of mediating HGL-stimulated tyrosine phosphorylation of itself. Most notably, EGFR and ErbB2 became markedly more promiscuous as the threshold was lowered, whereas ErbB3 did not. Engelman et al. (2007) found that amplification of MET caused gefitinib resistance by driving ERBB3-dependent activation of phosphoinositide 3-kinase, a pathway though to be specific to EGFR/ERBB family receptors.

Overview

Product Name	Anti-ErbB 3/ERBB3 Antibody
Reactive Species	Human
Description	Boster Bio Anti-ErbB 3/ERBB3 Antibody catalog # PA1880. Tested in WB applications. This antibody reacts with Human.
Application	WB
Clonality	Polyclonal
Formulation	Each vial contains 5mg BSA, 0.9mg NaCl, 0.2mg Na ₂ HPO ₄ , 0.05mg Thimerosal, 0.05mg NaN ₃ .
Storage Instructions	Store at -20°C for one year from date of receipt. After reconstitution, at 4°C for one month. It can also be aliquotted and stored frozen at -20°C for six months. Avoid repeated freeze-thaw cycles.
Host	Rabbit
Uniprot ID	P21860

Technical Details

Immunogen	A synthetic peptide corresponding to a sequence at the N-terminus of human ErbB 3.
Predicted Reactive Species	Bovine
Recommended Detection Systems	Boster recommends Enhanced Chemiluminescent Kit with anti-Rabbit IgG (EK1002) for Western blot.
Cross Reactivity	No cross-reactivity with other proteins
Isotype	Rabbit IgG
Form	Lyophilized

Concentration	Adding 0.2 ml of distilled water will yield a concentration of 500 ug/ml.
Purification	Immunogen affinity purified.
Suggested Dilutions	<p>Dilute the sample so that the expected range of concentrations fall within the detection range of this kit.</p> <p>If the expected range of concentration is unknown, a pilot test should be conducted to decide the optimal dilution ratio for your samples.</p> <p>Some PubMed article(s) citing the expression level of this target are as follows:</p> <p>Boster Bio's internal QC testing used:</p> <p>Western blot, 0.1-0.5ug/ml, Human</p>

Anti-ErbB 3/ERBB3 Antibody (PA1880) Images

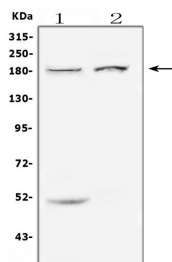


Figure 1. Western blot analysis of ERBB3 using anti-ERBB3 antibody (PA1880).

Electrophoresis was performed on a 5-20% SDS-PAGE gel at 70V (Stacking gel) / 90V (Resolving gel) for 2-3 hours. The sample well of each lane was loaded with 50ug of sample under reducing conditions.

Lane 1: human Caco-2 whole cell lysates

Lane 2: human K562 whole cell lysates

After Electrophoresis, proteins were transferred to a Nitrocellulose membrane at 150mA for 50-90 minutes. Blocked the membrane with 5% Non-fat Milk/ TBS for 1.5 hour at RT. The membrane was incubated with rabbit anti-ERBB3 antigen affinity purified polyclonal antibody (Catalog # PA1880) at 0.5 ug/mL overnight at 4°C, then washed with TBS-0.1%Tween 3 times with 5 minutes each and probed with a goat anti-rabbit IgG-HRP secondary antibody at a dilution of 1:10000 for 1.5 hour at RT. The signal is developed using an Enhanced Chemiluminescent detection (ECL) kit (Catalog # EK1002) with Tanon 5200 system. A specific band was detected for ERBB3 at approximately 180KD. The expected band size for ERBB3 is at 148KD.

Submit a product review to Biocompare.com

Submit a review of this product to Biocompare.com to receive a \$20 Amazon.com giftcard! Your reviews help your fellow scientists make the right decisions. Thank you for your contribution.



Anti-ErbB 3/ERBB3 Antibody