

Anti-MCSF Receptor/CSF1R Antibody

Catalog Number: PA1905

About CSF1R

CSF1R (Colony-Stimulating Factor 1 Receptor) also known as MCSFR, FMS, c-FMS, CD115, ONCOGENE FMS or CD115 ANTIGEN, encodes a tyrosine kinase growth factor receptor for colony-stimulating factor-1, the macrophage-and monocyte-specific growth factor. The gene is located on long arm of chromosome 5 (5q32) on the Crick (minus) strand. The as-yet-unidentified CSF1 Rpromoter/enhancer sequences may be confined to the nucleotides separating the 2 genes or could potentially lie within the PDGFR gene itself. The encoded protein is a single pass type I membrane protein and acts as the receptor for colony stimulating factor 1, a cytokine which controls the production, differentiation, and function of macrophages. The encoded protein is a tyrosine kinase transmembrane receptor and member of the CSF1/PDGF receptor family of tyrosine-protein kinases. Kondo et al. (2000) showed that the endogenous myelomonocytic cytokine receptors for GM-CSF and macrophage colony-stimulating factor (CSF1R) are expressed at low to moderate levels on the more primitive hematopoietic stem cells, are absent on common lymphoid progenitors, and are upregulated after myeloid lineage induction by IL2.

Overview

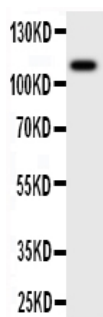
Product Name	Anti-MCSF Receptor/CSF1R Antibody
Reactive Species	Human, Mouse, Rat
Description	Boster Bio Anti-MCSF Receptor/CSF1R Antibody catalog # PA1905. Tested in WB applications. This antibody reacts with Human, Mouse, Rat.
Application	WB
Clonality	Polyclonal
Formulation	Each vial contains 5mg BSA, 0.9mg NaCl, 0.2mg Na2HPO4, 0.05mg Thimerosal, 0.05mg NaN3.
Storage Instructions	Store at -20°C for one year from date of receipt. After reconstitution, at 4°C for one month. It can also be aliquotted and stored frozen at -20°C for six months. Avoid repeated freeze-thaw cycles.
Host	Rabbit
Uniprot ID	P07333

Technical Details

Immunogen	A synthetic peptide corresponding to a sequence at the C-terminus of human MCSF Receptor, different from the related mouse sequence by one amino acid and from the related rat sequence by two amino acids.
Predicted Reactive Species	Hamster
Recommended Detection Systems	Boster recommends Enhanced Chemiluminescent Kit with anti-Rabbit IgG (EK1002) for Western blot.
Cross Reactivity	No cross-reactivity with other proteins

Isotype	Rabbit IgG
Form	Lyophilized
Concentration	Adding 0.2 ml of distilled water will yield a concentration of 500 ug/ml.
Purification	Immunogen affinity purified.
Suggested Dilutions	<p>Dilute the sample so that the expected range of concentrations fall within the detection range of this kit.</p> <p>If the expected range of concentration is unknown, a pilot test should be conducted to decide the optimal dilution ratio for your samples.</p> <p>Some PubMed article(s) citing the expression level of this target are as follows:</p> <p>Boster Bio's internal QC testing used:</p> <p>Western blot, 0.1-0.5ug/ml, Human, Rat, Mouse</p>

Anti-MCSF Receptor/CSF1R Antibody (PA1905) Images



Anti-MCSF Receptor antibody, PA1905, Western blotting
WB: Rat Intestine Tissue Lysate

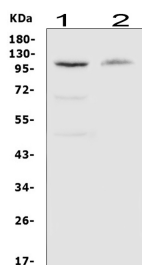


Figure 2. Western blot analysis of MCSF Receptor using anti-MCSF Receptor antibody (PA1905).

Electrophoresis was performed on a 5-20% SDS-PAGE gel at 70V (Stacking gel) / 90V (Resolving gel) for 2-3 hours. The sample well of each lane was loaded with 50ug of sample under reducing conditions.

Lane 1: human Raji whole cell lysates

Lane 2: mouse RAW246.7 whole cell lysates

After Electrophoresis, proteins were transferred to a Nitrocellulose membrane at 150mA for 50-90 minutes. Blocked the membrane with 5% Non-fat Milk/ TBS for 1.5 hour at RT. The membrane was incubated with rabbit anti-MCSF Receptor antigen affinity purified polyclonal antibody (Catalog # PA1905) at 0.5 ug/mL overnight at 4°C, then washed with TBS-0.1%Tween 3 times with 5 minutes each and probed with a goat anti-rabbit IgG-HRP secondary antibody at a dilution of 1:10000 for 1.5 hour at RT. The signal is developed using an Enhanced Chemiluminescent detection (ECL) kit (Catalog # EK1002) with Tanon 5200 system. A specific band was detected for MCSF Receptor at approximately 108KD. The expected band size for MCSF Receptor is at 108KD.

Submit a product review to Biocompare.com

Submit a review of this product to Biocompare.com to receive a \$20 Amazon.com giftcard! Your reviews help your fellow scientists make the right decisions. Thank you for your contribution.



Anti-MCSF Receptor/CSF1R Antibody