

## Anti-Ki67/MKI67 Antibody

Catalog Number: PA1918

### About MKI67

Ki-67 (Proliferation-related Ki-67 antigen), also known as MKI67 or KIA, is a protein that in humans is encoded by the MKI67 gene. From study of a panel of human-rodent somatic cell hybrids, Schonk et al. (1989) demonstrated that a gene involved in the expression of the MKI67 antigen is located on chromosome 10. By in situ hybridization, Fonatsch et al. (1991) regionalized the MKI67 gene to chromosome 10q25-qter. By FISH, Traut et al. (1998) mapped the mouse Mki67 gene to chromosome 7F3-F5. Antigen KI-67 is a nuclear protein that is associated with and may be necessary for cellular proliferation. Furthermore it is associated with ribosomal RNA transcription. Inactivation of antigen KI-67 leads to inhibition of ribosomal RNA synthesis.

### Overview

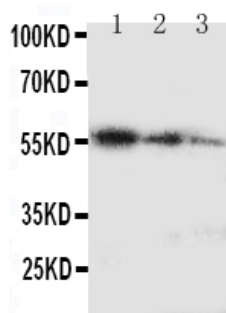
Product Name	Anti-Ki67/MKI67 Antibody
Reactive Species	Human
Description	Boster Bio Anti-Ki67/MKI67 Antibody catalog # PA1918. Tested in WB applications. This antibody reacts with Human.
Application	WB
Clonality	Polyclonal
Formulation	Each vial contains 5mg BSA, 0.9mg NaCl, 0.2mg Na2HPO4, 0.05mg Thimerosal, 0.05mg NaN3.
Storage Instructions	Store at -20°C for one year from date of receipt. After reconstitution, at 4°C for one month. It can also be aliquotted and stored frozen at -20°C for six months. Avoid repeated freeze-thaw cycles.
Host	Rabbit
Uniprot ID	P46013

### Technical Details

Immunogen	A synthetic peptide corresponding to a sequence at the C-terminus of human Ki67.
Predicted Reactive Species	Hamster
Recommended Detection Systems	Boster recommends Enhanced Chemiluminescent Kit with anti-Rabbit IgG (EK1002) for Western blot.
Cross Reactivity	No cross-reactivity with other proteins
Isotype	Rabbit IgG
Form	Lyophilized

Concentration	Adding 0.2 ml of distilled water will yield a concentration of 500 ug/ml.
Purification	Immunogen affinity purified.
Suggested Dilutions	<p>Dilute the sample so that the expected range of concentrations fall within the detection range of this kit.</p> <p>If the expected range of concentration is unknown, a pilot test should be conducted to decide the optimal dilution ratio for your samples.</p> <p>Some PubMed article(s) citing the expression level of this target are as follows:</p> <p>Boster Bio's internal QC testing used:</p> <p>Western blot, 0.1-0.5ug/ml, Human</p>

## Anti-Ki67/MKI67 Antibody (PA1918) Images



Anti-Ki67 antibody, PA1918, Western blotting  
Recombinant Protein Detection Source: E.coli derived  
-recombinant Human Ki67 50.3KD (162aa tag+  
K2967-I3256)

Lane 1: Recombinant Human Ki67 Protein 10ng

Lane 2: Recombinant Human Ki67 Protein 5ng

Lane 3: Recombinant Human Ki67 Protein 2.5ng

## 48 Publications Citing This Product

1. PubMed ID: 32158357, Yang Z,Zhang J,Lu D,Sun Y, Zhao X,Wang X,Zhou W,He Q,Jiang Z.Hsa\_circ\_0137008 suppresses the malignant phenotype in colorectal cancer by acting as a microRNA-338-5p sponge. Cancer Cell Int.2020 Mar 4;20:67. doi:10.1186/s12935-020-1150-1.PMID:32158357;PMC
2. PubMed ID: 26938295, Tumor-suppressive function of long noncoding RNA MALAT1 in glioma cells by downregulation of MMP2 and inactivation of ERK/MAPK signaling
3. PubMed ID: 23554729, Soy isoflavone extracts stimulate the growth of nude mouse xenografts bearing estrogen-dependent human breast cancer cells (MCF-7)

Visit [bosterbio.com/anti-ki67-antibody-pa1918-boster.html](https://www.bosterbio.com/anti-ki67-antibody-pa1918-boster.html) to see all 48 publications.

## Submit a product review to Biocompare.com

Submit a review of this product to Biocompare.com to receive a \$20 Amazon.com giftcard! Your reviews help your fellow scientists make the right decisions. Thank you for your contribution.



Anti-Ki67/MKI67 Antibody