

Anti-Milk Fat Globule 1/MFGE8 Antibody

Catalog Number: PA1945

About MFGE8

MFGE8 (Milk Fat Globule-Egf Factor 8), also called as Lactadherin or SED1, is a protein which in humans is encoded by the MFGE8 gene. Mfge8 is secreted protein found in vertebrates, including mammals as well as birds. By fluorescence in situ hybridization, Collins et al. (1997) mapped the MFGE8 gene to chromosome 15q25. Hanayama et al. (2002) found that MFGE8 is a factor that links apoptotic cells to phagocytes. MFGE8 specifically bound to apoptotic cells by recognizing aminophospholipids such as phosphatidylserine. MFGE8, when engaged by phospholipids, bound to cells via its RGD motif. It bound particularly strongly to cells expressing alpha-V-beta-3 integrin. Bu et al. (2007) showed that Mfge8 was expressed in intestinal lamina propria macrophages in mice. Using a wound-healing assay, they showed that Mfge8 promoted migration of intestinal epithelial cells through a PKC-epsilon (PRKCE)-dependent mechanism.

Overview

Product Name	Anti-Milk Fat Globule 1/MFGE8 Antibody
Reactive Species	Human
Description	Boster Bio Anti-Milk Fat Globule 1/MFGE8 Antibody catalog # PA1945. Tested in IHC, WB applications. This antibody reacts with Human.
Application	IHC, WB
Clonality	Polyclonal
Formulation	Each vial contains 4mg Trehalose, 0.9mg NaCl and 0.2mg Na2HPO4.
Storage Instructions	Store at -20°C for one year from date of receipt. After reconstitution, at 4°C for one month. It can also be aliquotted and stored frozen at -20°C for six months. Avoid repeated freeze-thaw cycles.
Host	Rabbit
Uniprot ID	Q08431

Technical Details

Immunogen	A synthetic peptide corresponding to a sequence in the middle region of human Human Milk Fat Globule 1.
Predicted Reactive Species	Bovine
Recommended Detection Systems	Boster recommends Enhanced Chemiluminescent Kit with anti-Rabbit IgG (EK1002) for Western blot, and HRP Conjugated anti-Rabbit IgG Super Vision Assay Kit (SV0002-1) for IHC(P).
Cross Reactivity	No cross-reactivity with other proteins
Isotype	Rabbit IgG

Form	Lyophilized
Concentration	Adding 0.2 ml of distilled water will yield a concentration of 500 ug/ml.
Purification	Immunogen affinity purified.
Suggested Dilutions	<p>Dilute the sample so that the expected range of concentrations fall within the detection range of this kit.</p> <p>If the expected range of concentration is unknown, a pilot test should be conducted to decide the optimal dilution ratio for your samples.</p> <p>Some PubMed article(s) citing the expression level of this target are as follows:</p> <p>Boster Bio's internal QC testing used:</p> <p>Western blot, 0.1-0.5ug/ml, Human</p> <p>Immunohistochemistry (Paraffin-embedded Section), 2-5ug/ml, Human, By Heat</p>

Anti-Milk Fat Globule 1/MFGE8 Antibody (PA1945) Images

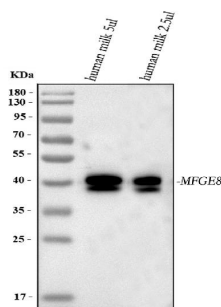


Figure 1. Western blot analysis of MFGE8 using anti-MFGE8 antibody (PA1945).

Electrophoresis was performed on a 5-20% SDS-PAGE gel at 70V (Stacking gel) / 90V (Resolving gel) for 2-3 hours. The sample well of each lane was loaded with 30 ug of sample under reducing conditions.

Lane 1: human milk 5 ul,

Lane 2: human milk 2.5 ul.

After electrophoresis, proteins were transferred to a nitrocellulose membrane at 150 mA for 50-90 minutes. Blocked the membrane with 5% non-fat milk/TBS for 1.5 hour at RT. The membrane was incubated with rabbit anti-MFGE8 antigen affinity purified polyclonal antibody (Catalog # PA1945) at 0.5 ug/mL overnight at 4°C, then washed with TBS-0.1%Tween 3 times with 5 minutes each and probed with a goat anti-rabbit IgG-HRP secondary antibody at a dilution of 1:5000 for 1.5 hour at RT. The signal is developed using an Enhanced Chemiluminescent detection (ECL) kit (Catalog # EK1002) with Tanon 5200 system. A specific band was detected for MFGE8 at approximately 43 kDa. The expected band size for MFGE8 is at 43 kDa.

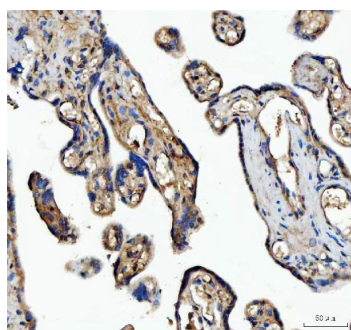


Figure 2. IHC analysis of MFGE8 using anti-MFGE8 antibody (PA1945).

MFGE8 was detected in a paraffin-embedded section of human placenta tissue. Heat mediated antigen retrieval was performed in EDTA buffer (pH 8.0, epitope retrieval solution). The tissue section was blocked with 10% goat serum. The tissue section was then incubated with 2 ug/ml rabbit anti-MFGE8 Antibody (PA1945) overnight at 4°C. Peroxidase Conjugated Goat Anti-rabbit IgG was used as secondary antibody and incubated for 30 minutes at 37°C. The tissue section was developed using HRP Conjugated Rabbit IgG Super Vision Assay Kit (Catalog # SV0002) with DAB as the chromogen.

1 Publications Citing This Product

1. PubMed ID: 26582774, Innate Immune Factors in Mothers' Breast Milk and Their Lack of Association With Rotavirus Vaccine Immunogenicity in Nicaraguan Infants.

Visit bosterbio.com/anti-milk-fat-globule-1-antibody-pa1945-boster.html to see all 1 publications.

Submit a product review to Biocompare.com

Submit a review of this product to Biocompare.com to receive a \$20 Amazon.com giftcard! Your reviews help your fellow scientists make the right decisions. Thank you for your contribution.

