

Anti-NRG1 Antibody

Catalog Number: PA1969

About NRG1

NRG1 (Neuregulin 1), also known as ARIA, NDF or HRGA, is a protein that in humans is encoded by the NRG1 gene. NRG1 is one of four proteins in the neuregulin family that act on the EGFR family of receptors. By in situ hybridization of a tritium-labeled probe to human metaphase spreads, Orr-Urtreger et al. (1993) localized the NDF gene to 8p21-p12. In mouse embryos 14.5 days postcoitum, Orr-Urtreger et al. (1993) found that NDF expression is confined predominantly to the central and peripheral nervous systems, including the neuroepithelium that lines the lateral ventricles of the brain, the ventral horn of the spinal cord, and the intestinal as well as dorsal root ganglia.

Overview

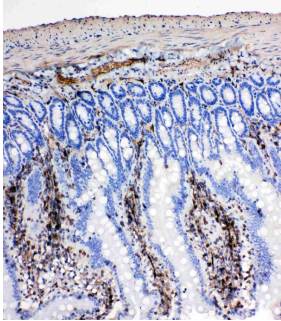
Product Name	Anti-NRG1 Antibody
Reactive Species	Human, Mouse, Rat
Description	Boster Bio Anti-NRG1 Antibody catalog # PA1969. Tested in IHC, ICC, WB applications. This antibody reacts with Human, Mouse, Rat.
Application	IHC, ICC, WB
Clonality	Polyclonal
Formulation	Each vial contains 4mg Trehalose, 0.9mg NaCl and 0.2mg Na ₂ HPO ₄ .
Storage Instructions	Store at -20°C for one year from date of receipt. After reconstitution, at 4°C for one month. It can also be aliquotted and stored frozen at -20°C for six months. Avoid repeated freeze-thaw cycles.
Host	Rabbit
Uniprot ID	Q02297

Technical Details

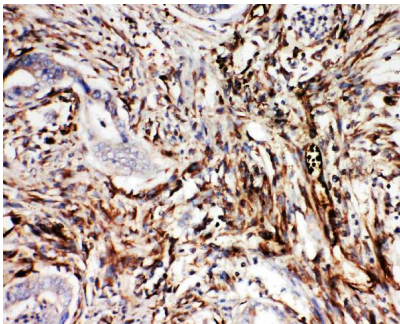
Immunogen	A synthetic peptide corresponding to a sequence at the C-terminus of human NRG1, different from the related rat and mouse sequences by one amino acids.
Predicted Reactive Species	Hamster
Recommended Detection Systems	Boster recommends Enhanced Chemiluminescent Kit with anti-Rabbit IgG (EK1002) for Western blot, and HRP Conjugated anti-Rabbit IgG Super Vision Assay Kit (SV0002-1) for IHC(P), IHC(F) and ICC.
Cross Reactivity	No cross-reactivity with other proteins
Isotype	Rabbit IgG
Form	Lyophilized

Concentration	Adding 0.2 ml of distilled water will yield a concentration of 500 ug/ml.
Purification	Immunogen affinity purified.
Suggested Dilutions	<p>Dilute the sample so that the expected range of concentrations fall within the detection range of this kit.</p> <p>If the expected range of concentration is unknown, a pilot test should be conducted to decide the optimal dilution ratio for your samples.</p> <p>Some PubMed article(s) citing the expression level of this target are as follows:</p> <p>Boster Bio's internal QC testing used:</p> <p>Immunohistochemistry (Paraffin-embedded Section), 0.5-1ug/ml, Human, Rat, Mouse, By Heat</p> <p>Immunocytochemistry , 0.5-1ug/ml, Human, Mouse, Rat</p> <p>Immunohistochemistry (Frozen Section), 0.5-1ug/ml, Rat, Human, Mouse</p> <p>Western blot, 0.1-0.5ug/ml, Human, Rat, Mouse</p>

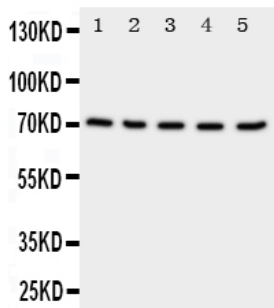
Anti-NRG1 Antibody (PA1969) Images



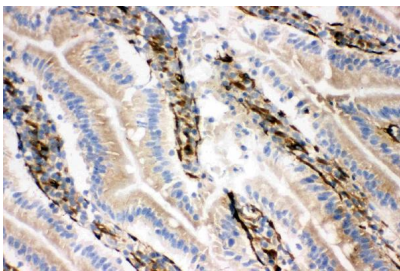
Anti-NRG1 antibody, PA1969, IHC(P)
IHC(P): Rat Intestine Tissue



Anti-NRG1 antibody, PA1969, IHC(P)
IHC(P): Human Intestinal Cancer Tissue

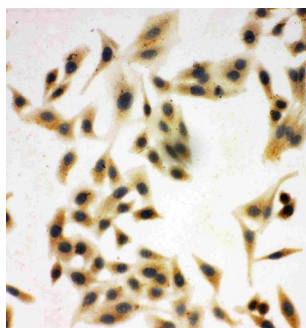


Anti-NRG1 antibody, PA1969, Western blotting
Lane 1: Rat Spleen Tissue Lysate
Lane 2: Rat Kidney Tissue Lysate
Lane 3: Rat Brain Tissue Lysate
Lane 4: HELA Cell Lysate
Lane 5: SMMC Cell Lysate



Anti-NRG1 antibody, PA1969, IHC(F)
IHC(F): Rat Intestine Tissue

Anti-NRG1 antibody, PA1969, ICC
ICC: HELA Cell



1 Publications Citing This Product

1. PubMed ID: 26261541, Qiliqiangxin improves cardiac function and attenuates cardiac remodeling in rats with experimental myocardial infarction.

Visit bosterbio.com/anti-nrg1-antibody-pa1969-boster.html to see all 1 publications.

Submit a product review to Biocompare.com

Submit a review of this product to Biocompare.com to receive a \$20 Amazon.com giftcard! Your reviews help your fellow scientists make the right decisions. Thank you for your contribution.



Anti-NRG1 Antibody