

Anti-VEGF Receptor 2/KDR Antibody

Catalog Number: PA1989

About KDR

KDR (Kinase Insert Domain Receptor), also known as FLK1, VEGFR or VEGFR2, is a VEGF receptor. KDR is the human gene encoding it. Sait et al. (1995) likewise corrected the assignment to chromosome 4q11-q12 to the same region occupied also by PDGFRA and KIT, thus indicating the location of a cluster of receptor tyrosine kinase genes. Vascular endothelial growth factor (VEGF) is the only mitogen that specifically acts on endothelial cells. Its expression is upregulated by hypoxia, and its cell-surface receptor, known as fetal liver kinase-1 (Flk1) in mouse, is exclusively expressed in endothelial cells (Plate et al., 1993). Flk1 is the mouse homolog of KDR (Matthews et al., 1991).

Overview

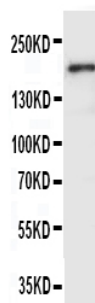
| | |
|----------------------|---|
| Product Name | Anti-VEGF Receptor 2/KDR Antibody |
| Reactive Species | Human |
| Description | Boster Bio Anti-VEGF Receptor 2/KDR Antibody catalog # PA1989. Tested in IHC, ICC, WB applications. This antibody reacts with Human. |
| Application | IHC, ICC, WB |
| Clonality | Polyclonal |
| Formulation | Each vial contains 4 mg Trehalose, 0.9 mg NaCl, 0.2mg Na ₂ HPO ₄ , 0.05 mg NaN ₃ . |
| Storage Instructions | Store at -20°C for one year from date of receipt. After reconstitution, at 4°C for one month. It can also be aliquotted and stored frozen at -20°C for six months. Avoid repeated freeze-thaw cycles. |
| Host | Rabbit |
| Uniprot ID | P35968 |

Technical Details

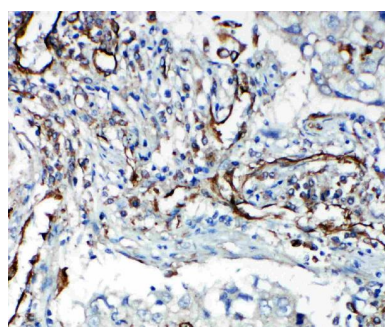
| | |
|-------------------------------|--|
| Immunogen | A synthetic peptide corresponding to a sequence in the middle region of human VEGF Receptor 2. |
| Predicted Reactive Species | Bovine |
| Recommended Detection Systems | Boster recommends Enhanced Chemiluminescent Kit with anti-Rabbit IgG (EK1002) for Western blot, and HRP Conjugated anti-Rabbit IgG Super Vision Assay Kit (SV0002-1) for IHC(P), IHC(F) and ICC. |
| Cross Reactivity | No cross-reactivity with other proteins |
| Isotype | Rabbit IgG |
| Form | Lyophilized |
| Concentration | Adding 0.2 ml of distilled water will yield a concentration of 500 ug/ml. |

| | |
|---------------------|--|
| Purification | Immunogen affinity purified. |
| Suggested Dilutions | <p>Dilute the sample so that the expected range of concentrations fall within the detection range of this kit.</p> <p>If the expected range of concentration is unknown, a pilot test should be conducted to decide the optimal dilution ratio for your samples.</p> <p>Some PubMed article(s) citing the expression level of this target are as follows:</p> <p>Boster Bio's internal QC testing used:</p> <p>Immunocytochemistry , 0.5- 1ug/ml, Human, -</p> <p>Immunohistochemistry (Frozen Section), 0.5-1ug/ml, Human, -</p> <p>Immunohistochemistry (Paraffin-embedded Section), 0.5-1ug/ml, Human, By Heat</p> <p>Western blot, 0.1-0.5ug/ml, Human</p> |

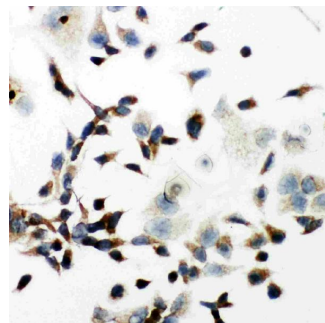
Anti-VEGF Receptor 2/KDR Antibody (PA1989) Images



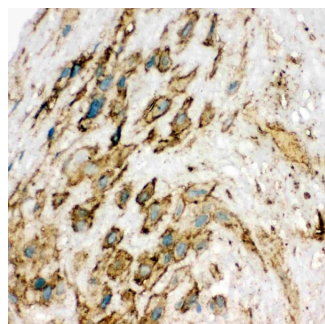
Anti-VEGF Receptor 2 antibody, PA1989, Western blotting
WB: SMMC Cell Lysate



Anti-VEGF Receptor 2 antibody, PA1989, IHC(P)
IHC(P): Human Lung Cancer Tissue



Anti-VEGF Receptor 2 antibody, PA1989, ICC
ICC: HELA Cell



Anti-VEGF Receptor 2 antibody, PA1989, IHC(F)
IHC(F): Human Placenta Tissue

6 Publications Citing This Product

1. PubMed ID: 23671638, Wu Y, You H, Ma P, Li L, Yuan Y, Li J, Ye X, Liu X, Yao H, Chen R, Lai K, Yang X. Plos One. 2013 May 9;8(5):E62827. Doi: 10.1371/Journal.Pone.0062827. Print 2013. Role Of Transient Receptor Potential Ion Channels And Evoked Levels Of Neuropeptides...
2. PubMed ID: 23946799, Wang L, Liu X, Wang H, Wang S. Oncol Lett. 2013 Jul;6(1):175-180. Epub 2013 May 15. Correlation Of The Expression Of Vascular Endothelial Growth Factor And Its Receptors With Microvessel Density In Ovarian Cancer.

3. PubMed ID: 25009634, Zhu Y, Tuerxun A, Hui Y, Abliz P. Exp Ther Med. 2014 Aug;8(2):647-651. Epub 2014 Jun 12. Effects Of Propranolol And Isoproterenol On Infantile Hemangioma Endothelial Cells In Vitro.

Visit bosterbio.com/anti-vegf-receptor-2-antibody-pa1989-boster.html to see all 6 publications.

Submit a product review to Biocompare.com

Submit a review of this product to Biocompare.com to receive a \$20 Amazon.com giftcard! Your reviews help your fellow scientists make the right decisions. Thank you for your contribution.



Anti-VEGF Receptor 2/KDR Antibody