

## Anti-T-bet/Tbx21 Antibody

Catalog Number: PA1999

### About TBX21

TBX21 (T-Box 21), also called TBET, is a protein that in humans is encoded by the TBX21 gene. This gene is a member of a phylogenetically conserved family of genes that share a common DNA-binding domain, the T-box. Zhang and Yang (2000) mapped the mouse Tbx21 gene to chromosome 11D in an area showing homology of synteny with human chromosome 17. Szabo et al. (2000) showed that TBX21 expression correlates with IFNG expression in Th1 and natural killer (NK) cells. Ectopic expression of TBX21 both transactivated the IFNG gene and induced endogenous IFNG production. Finotto et al. (2002) observed reduced expression of the T (H)1 transcription factor Tbet in T cells from airways of patients with asthma compared with that in T cells from airways of nonasthmatic patients, suggesting that loss of Tbet might be associated with asthma.

### Overview

Product Name	Anti-T-bet/Tbx21 Antibody
Reactive Species	Human, Mouse, Rat
Description	Boster Bio Anti-T-bet/Tbx21 Antibody catalog # PA1999. Tested in WB applications. This antibody reacts with Human, Mouse, Rat.
Application	WB
Clonality	Polyclonal
Formulation	Each vial contains 5mg BSA, 0.9mg NaCl, 0.2mg Na2HPO4, 0.05mg Thimerosal, 0.05mg NaN3.
Storage Instructions	Store at -20°C for one year from date of receipt. After reconstitution, at 4°C for one month. It can also be aliquotted and stored frozen at -20°C for six months. Avoid repeated freeze-thaw cycles.
Host	Rabbit
Uniprot ID	Q9UL17

### Technical Details

Immunogen	A synthetic peptide corresponding to a sequence at the C-terminus of human T-bet, different from the related rat and mouse sequences by one amino acid.
Predicted Reactive Species	Bovine
Recommended Detection Systems	Boster recommends Enhanced Chemiluminescent Kit with anti-Rabbit IgG (EK1002) for Western blot.
Cross Reactivity	No cross-reactivity with other proteins
Isotype	Rabbit IgG

Form	Lyophilized
Concentration	Adding 0.2 ml of distilled water will yield a concentration of 500 ug/ml.
Purification	Immunogen affinity purified.
Suggested Dilutions	<p>Dilute the sample so that the expected range of concentrations fall within the detection range of this kit.</p> <p>If the expected range of concentration is unknown, a pilot test should be conducted to decide the optimal dilution ratio for your samples.</p> <p>Some PubMed article(s) citing the expression level of this target are as follows:</p> <p>Boster Bio's internal QC testing used:</p> <p>Western blot, 0.1-0.5ug/ml, Human, Rat, Mouse</p>

## Anti-T-bet/Tbx21 Antibody (PA1999) Images

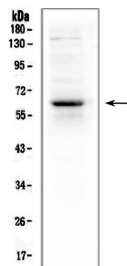


Figure 1. Western blot analysis of T-bet using anti-T-bet antibody (PA1999).

Electrophoresis was performed on a 5-20% SDS-PAGE gel at 70V (Stacking gel) / 90V (Resolving gel) for 2-3 hours. The sample well of each lane was loaded with 50ug of sample under reducing conditions.

Lane 1: mouse thymus tissue lysate.

After Electrophoresis, proteins were transferred to a Nitrocellulose membrane at 150mA for 50-90 minutes. Blocked the membrane with 5% Non-fat Milk/ TBS for 1.5 hour at RT. The membrane was incubated with rabbit anti-T-bet antigen affinity purified polyclonal antibody (Catalog # PA1999) at 0.5 ug/mL overnight at 4°C, then washed with TBS-0.1%Tween 3 times with 5 minutes each and probed with a goat anti-rabbit IgG-HRP secondary antibody at a dilution of 1:10000 for 1.5 hour at RT. The signal is developed using an Enhanced Chemiluminescent detection (ECL) kit (Catalog # EK1002) with Tanon 5200 system. A specific band was detected for T-bet at approximately 58-60KD. The expected band size for T-bet is at 58KD.

## 1 Publications Citing This Product

1. PubMed ID: 23056858, Miao L, Run-Ming J, Yi J. Iran J Pediatr. 2012 Mar;22(1):43-51. T-Bet Mediated Anti-Neoplastic Effects Of Dendritic Cell-Cytokine Induced Killer Cells In Vitro.

Visit [bosterbio.com/anti-t-bet-tbx21-antibody-pa1999-boster.html](http://bosterbio.com/anti-t-bet-tbx21-antibody-pa1999-boster.html) to see all 1 publications.

## Submit a product review to Biocompare.com

Submit a review of this product to Biocompare.com to receive a \$20 Amazon.com giftcard! Your reviews help your fellow scientists make the right decisions. Thank you for your contribution.



Anti-T-bet/Tbx21 Antibody