

Anti-TRAF1 Antibody

Catalog Number: PA2006

About TRAF1

TRAF1 (TNF Receptor-Associated Factor 1), also called EBI6, is a protein that in humans is encoded by the TRAF1 gene. The protein encoded by this gene is a member of the TNF receptor (TNFR) associated factor (TRAF) protein family. Sieminski et al. (1997) used fluorescence in situ hybridization to map the TRAF1 gene to 9q33-q34. Mosialos et al. (1995) found that LMP1, the EBV-transforming protein, specifically associates with LAP1 (TRAF3) or EBI6 in B lymphoblasts. LMP1 expression redirects LAP1 and EBI6 from scattered cytoplasmic structures to LMP1 plasma membrane patches. Both LAP1 and EBI6 associated with the cytoplasmic domain of p80/TNFR2 in vivo.

Overview

Product Name	Anti-TRAF1 Antibody
Reactive Species	Human, Mouse
Description	Boster Bio Anti-TRAF1 Antibody catalog # PA2006. Tested in WB applications. This antibody reacts with Human, Mouse.
Application	WB
Clonality	Polyclonal
Formulation	Each vial contains 5mg BSA, 0.9mg NaCl, 0.2mg Na2HPO4, 0.05mg Thimerosal, 0.05mg NaN3.
Storage Instructions	Store at -20°C for one year from date of receipt. After reconstitution, at 4°C for one month. It can also be aliquotted and stored frozen at -20°C for six months. Avoid repeated freeze-thaw cycles.
Host	Rabbit
Uniprot ID	Q13077

Technical Details

Immunogen	A synthetic peptide corresponding to a sequence in the middle region of human TRAF1, different from the related mouse sequence by one amino acid.
Predicted Reactive Species	Hamster
Recommended Detection Systems	Boster recommends Enhanced Chemiluminescent Kit with anti-Rabbit IgG (EK1002) for Western blot.
Cross Reactivity	No cross-reactivity with other proteins
Isotype	Rabbit IgG
Form	Lyophilized
Concentration	Adding 0.2 ml of distilled water will yield a concentration of 500 ug/ml.

Purification	Immunogen affinity purified.
Suggested Dilutions	<p>Dilute the sample so that the expected range of concentrations fall within the detection range of this kit.</p> <p>If the expected range of concentration is unknown, a pilot test should be conducted to decide the optimal dilution ratio for your samples.</p> <p>Some PubMed article(s) citing the expression level of this target are as follows:</p> <p>Boster Bio's internal QC testing used:</p> <p>Western blot, 0.1-0.5ug/ml, Human, Mouse</p>

Anti-TRAF1 Antibody (PA2006) Images

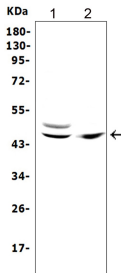


Figure 1. Western blot analysis of TRAF1 using anti-TRAF1 antibody (PA2006).

Electrophoresis was performed on a 5-20% SDS-PAGE gel at 70V (Stacking gel) / 90V (Resolving gel) for 2-3 hours. The sample well of each lane was loaded with 50ug of sample under reducing conditions.

Lane 1: human Raji whole cell lysates,

Lane 2: human T-47D whole cell lysates.

After Electrophoresis, proteins were transferred to a Nitrocellulose membrane at 150mA for 50-90 minutes. Blocked the membrane with 5% Non-fat Milk/ TBS for 1.5 hour at RT. The membrane was incubated with rabbit anti-TRAF1 antigen affinity purified polyclonal antibody (Catalog # PA2006) at 0.5 ug/mL overnight at 4°C, then washed with TBS-0.1%Tween 3 times with 5 minutes each and probed with a goat anti-rabbit IgG-HRP secondary antibody at a dilution of 1:10000 for 1.5 hour at RT. The signal is developed using an Enhanced Chemiluminescent detection (ECL) kit (Catalog # EK1002) with Tanon 5200 system. A specific band was detected for TRAF1 at approximately 46KD. The expected band size for TRAF1 is at 46KD.

Submit a product review to Biocompare.com

Submit a review of this product to Biocompare.com to receive a \$20 Amazon.com giftcard! Your reviews help your fellow scientists make the right decisions. Thank you for your contribution.



Anti-TRAF1 Antibody