

Anti-TRAF3 Antibody

Catalog Number: PA2008

About TRAF3

TRAF3 (TNF Receptor-Associated Factor 3), also called LAP1, CAP1, CRAF1 or CD40BP, is a protein that in humans is encoded by the TRAF3 gene. The protein encoded by this gene is a member of the TNF receptor (TNFR) associated factor (TRAF) protein family. Gross (2012) mapped the TRAF3 gene to chromosome 14q32.32 based on an alignment of the TRAF3 sequence with the genomic sequence (GRCh37). Dadgostar et al. (2003) determined that the coiled-coil domain of mouse T3jam interacted with the isoleucine zipper domain of Traf3. Oganessian et al. (2006) demonstrated that cells lacking TRAF3 are defective in type I interferon responses activated by several different Toll-like receptors.

Overview

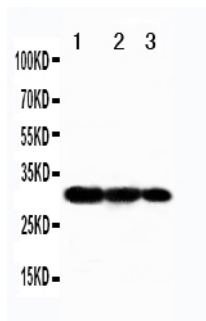
Product Name	Anti-TRAF3 Antibody
Reactive Species	Human, Mouse, Rat
Description	Boster Bio Anti-TRAF3 Antibody catalog # PA2008. Tested in WB applications. This antibody reacts with Human, Mouse, Rat.
Application	WB
Clonality	Polyclonal
Formulation	Each vial contains 5mg BSA, 0.9mg NaCl, 0.2mg Na2HPO4, 0.05mg Thimerosal, 0.05mg NaN3.
Storage Instructions	Store at -20°C for one year from date of receipt. After reconstitution, at 4°C for one month. It can also be aliquotted and stored frozen at -20°C for six months. Avoid repeated freeze-thaw cycles.
Host	Rabbit
Uniprot ID	Q13114

Technical Details

Immunogen	A synthetic peptide corresponding to a sequence in the middle region of human TRAF3, identical to the related rat and mouse sequences.
Predicted Reactive Species	Hamster
Recommended Detection Systems	Boster recommends Enhanced Chemiluminescent Kit with anti-Rabbit IgG (EK1002) for Western blot.
Cross Reactivity	No cross-reactivity with other proteins
Isotype	Rabbit IgG
Form	Lyophilized
Concentration	Adding 0.2 ml of distilled water will yield a concentration of 500 ug/ml.

Purification	Immunogen affinity purified.
Suggested Dilutions	<p>Dilute the sample so that the expected range of concentrations fall within the detection range of this kit.</p> <p>If the expected range of concentration is unknown, a pilot test should be conducted to decide the optimal dilution ratio for your samples.</p> <p>Some PubMed article(s) citing the expression level of this target are as follows:</p> <p>Boster Bio's internal QC testing used:</p> <p>Western blot, 0.1-0.5ug/ml, Human, Mouse, Rat</p>

Anti-TRAF3 Antibody (PA2008) Images



Anti-TRAF3 antibody, PA2008, Western blotting
Recombinant Protein Detection Source: E.coli derived
-recombinant Human TRAF3, 30.6KD (162aa tag+
R341-Y449)

Lane 1: Recombinant Human TRAF3 Protein 5ng
Lane 2: Recombinant Human TRAF3 Protein 2.5ng
Lane 3: Recombinant Human TRAF3 Protein 1.25ng

Submit a product review to Biocompare.com

Submit a review of this product to Biocompare.com to receive a \$20 Amazon.com giftcard! Your reviews help your fellow scientists make the right decisions. Thank you for your contribution.



Anti-TRAF3 Antibody