

## Anti-TRAF4 Antibody

Catalog Number: PA2009

### About TRAF4

TRAF4 (TNF Receptor-Associated Factor 4), also called CART1 or MLN62, is a protein that in humans is encoded by the TRAF3 gene. TRAF4 is a member of the TNF receptor associated factor (TRAF) family, a family of scaffold proteins. Tomasetto et al. (1995) identified genes that are overexpressed in breast cancer by differential screening of cDNAs from breast cancer-derived metastatic axillary lymph nodes. The TRAF4 cDNA, which they designated MLN62, was mapped to 17q11-q12 by radioisotopic in situ hybridization. To investigate the biologic function of TRAF4, Regnier et al. (2002) generated Traf4-deficient mice by gene disruption.

### Overview

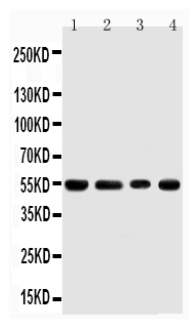
Product Name	Anti-TRAF4 Antibody
Reactive Species	Human, Mouse, Rat
Description	Boster Bio Anti-TRAF4 Antibody catalog # PA2009. Tested in IHC, WB applications. This antibody reacts with Human, Mouse, Rat.
Application	IHC, WB
Clonality	Polyclonal
Formulation	Each vial contains 5mg BSA, 0.9mg NaCl, 0.2mg Na2HPO4, 0.05mg Thimerosal, 0.05mg NaN3.
Storage Instructions	Store at -20°C for one year from date of receipt. After reconstitution, at 4°C for one month. It can also be aliquotted and stored frozen at -20°C for six months. Avoid repeated freeze-thaw cycles.
Host	Rabbit
Uniprot ID	Q9BUZ4

### Technical Details

Immunogen	A synthetic peptide corresponding to a sequence at the C-terminus of human TRAF4, identical to the related rat and mouse sequences.
Predicted Reactive Species	Hamster
Recommended Detection Systems	Boster recommends Enhanced Chemiluminescent Kit with anti-Rabbit IgG (EK1002) for Western blot, and HRP Conjugated anti-Rabbit IgG Super Vision Assay Kit (SV0002-1) for IHC(P).
Cross Reactivity	No cross-reactivity with other proteins
Isotype	Rabbit IgG
Form	Lyophilized
Concentration	Adding 0.2 ml of distilled water will yield a concentration of 500 ug/ml.

Purification	Immunogen affinity purified.
Suggested Dilutions	<p>Dilute the sample so that the expected range of concentrations fall within the detection range of this kit.</p> <p>If the expected range of concentration is unknown, a pilot test should be conducted to decide the optimal dilution ratio for your samples.</p> <p>Some PubMed article(s) citing the expression level of this target are as follows:</p> <p>Boster Bio's internal QC testing used:</p> <p>Immunohistochemistry (Paraffin-embedded Section), 0.5-1ug/ml, Human, Rat, Mouse, By Heat</p> <p>Western blot, 0.1-0.5ug/ml, Human, Mouse, Rat</p>

## Anti-TRAF4 Antibody (PA2009) Images



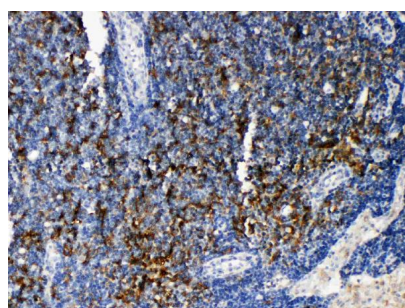
Anti-TRAF4 antibody, PA2009, Western blotting

Lane 1: Rat Thymus Tissue Lysate

Lane 2: HELA Cell Lysate

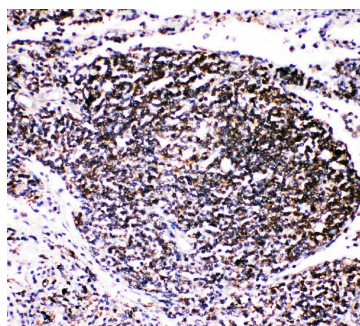
Lane 3: JURKAT Cell Lysate

Lane 4: HEPA Cell Lysate



Anti-TRAF4 antibody, PA2009, IHC(P)

IHC(P): Rat Lymphonodus Tissue



Anti-TRAF4 antibody, PA2009, IHC(P)

IHC(P): Human Lung Cancer Tissue

## Submit a product review to Biocompare.com

Submit a review of this product to Biocompare.com to receive a \$20 Amazon.com giftcard! Your reviews help your fellow scientists make the right decisions. Thank you for your contribution.



Anti-TRAF4 Antibody