

## Anti-eIF3B Antibody

Catalog Number: PA2030

### About EIF3B

EIF3B (Eukaryotic Translation Initiation Factor 3, Subunit B), also called PRT1 or EIF3-p116, is a protein that in humans is encoded by the EIF3B gene. By searching an EST database, Methot et al. (1997) identified a cDNA encoding a human PRT1 homolog. Asano et al. (1997) demonstrated that the 115-kD component of HeLa cell eIF3 is actually composed of 2 proteins, p116 (PRT1) and an unrelated 110-kD protein. Chaudhuri et al. (1997) isolated cDNAs encoding PRT1, which they called p110 based on the size of the corresponding component of rabbit eIF3.

### Overview

Product Name	Anti-eIF3B Antibody
Reactive Species	Human
Description	Boster Bio Anti-eIF3B Antibody catalog # PA2030. Tested in WB applications. This antibody reacts with Human.
Application	WB
Clonality	Polyclonal
Formulation	Each vial contains 5mg BSA, 0.9mg NaCl, 0.2mg Na2HPO4, 0.05mg Thimerosal, 0.05mg NaN3.
Storage Instructions	Store at -20°C for one year from date of receipt. After reconstitution, at 4°C for one month. It can also be aliquotted and stored frozen at -20°C for six months. Avoid repeated freeze-thaw cycles.
Host	Rabbit
Uniprot ID	P55884

### Technical Details

Immunogen	A synthetic peptide corresponding to a sequence at the C-terminus of human eIF3B, different from the related rat and mouse sequences by one amino acid.
Predicted Reactive Species	Hamster
Recommended Detection Systems	Boster recommends Enhanced Chemiluminescent Kit with anti-Rabbit IgG (EK1002) for Western blot.
Cross Reactivity	No cross-reactivity with other proteins
Isotype	Rabbit IgG
Form	Lyophilized
Concentration	Adding 0.2 ml of distilled water will yield a concentration of 500 ug/ml.

Purification	Immunogen affinity purified.
Suggested Dilutions	<p>Dilute the sample so that the expected range of concentrations fall within the detection range of this kit.</p> <p>If the expected range of concentration is unknown, a pilot test should be conducted to decide the optimal dilution ratio for your samples.</p> <p>Some PubMed article(s) citing the expression level of this target are as follows:</p> <p>Boster Bio's internal QC testing used:</p> <p>Western blot, 0.1-0.5ug/ml, Human</p>

## Anti-eIF3B Antibody (PA2030) Images

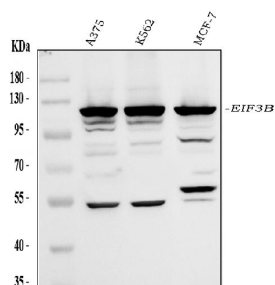


Figure 1. Western blot analysis of EIF3B using anti-EIF3B antibody (PA2030).

Electrophoresis was performed on a 5-20% SDS-PAGE gel at 70V (Stacking gel) / 90V (Resolving gel) for 2-3 hours. The sample well of each lane was loaded with 30 ug of sample under reducing conditions.

Lane 1: human A375 whole cell lysates,

Lane 2: human K562 whole cell lysates,

Lane 3: human MCF-7 whole cell lysates.

After electrophoresis, proteins were transferred to a nitrocellulose membrane at 150 mA for 50-90 minutes. Blocked the membrane with 5% non-fat milk/TBS for 1.5 hour at RT. The membrane was incubated with rabbit anti-EIF3B antigen affinity purified polyclonal antibody (Catalog # PA2030) at 0.5 ug/mL overnight at 4°C, then washed with TBS-0.1%Tween 3 times with 5 minutes each and probed with a goat anti-rabbit IgG-HRP secondary antibody at a dilution of 1:5000 for 1.5 hour at RT. The signal is developed using an Enhanced Chemiluminescent detection (ECL) kit (Catalog # EK1002) with Tanon 5200 system. A specific band was detected for EIF3B at approximately 115 kDa. The expected band size for EIF3B is at 92 kDa.

## Submit a product review to Biocompare.com

Submit a review of this product to Biocompare.com to receive a \$20 Amazon.com giftcard! Your reviews help your fellow scientists make the right decisions. Thank you for your contribution.



Anti-eIF3B Antibody