

## Anti-integrin beta 4 binding protein/EIF6 Antibody

Catalog Number: PA2031

### About EIF6

EIF6 (Eukaryotic Translation Initiation Factor 6), also called EIF3A or ITGB4BP, is a human gene. By fluorescence in situ hybridization, Sanvito et al. (1998) mapped the ITGB4BP gene to 20q11.2. Ceci et al. (2003) demonstrated that the ribosomal 60S subunit is activated by release of EIF6. In the cytoplasm, EIF6 is bound to free 60S but not to 80S subunits. Furthermore, EIF6 interacts in the cytoplasm with RACK1, a receptor for activated protein kinase C. Gandin et al. (2008) demonstrated that mammalian eIF6 is required for efficient initiation of translation in vivo. Eif6-null mouse embryos were lethal at preimplantation. Heterozygous mice had 50% reduction of eIF6 levels in all tissues, and showed reduced mass of hepatic and adipose tissues due to a lower number of cells and to impaired G1/S cell cycle progression.

### Overview

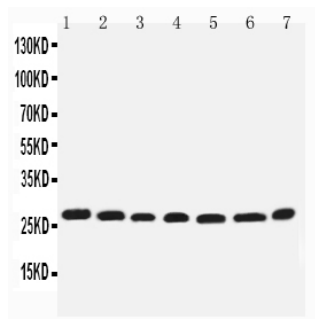
Product Name	Anti-integrin beta 4 binding protein/EIF6 Antibody
Reactive Species	Human, Mouse, Rat
Description	Boster Bio Anti-integrin beta 4 binding protein/EIF6 Antibody catalog # PA2031. Tested in IHC, WB applications. This antibody reacts with Human, Mouse, Rat.
Application	IHC, WB
Clonality	Polyclonal
Formulation	Each vial contains 5mg BSA, 0.9mg NaCl, 0.2mg Na2HPO4, 0.05mg Thimerosal, 0.05mg NaN3.
Storage Instructions	Store at -20°C for one year from date of receipt. After reconstitution, at 4°C for one month. It can also be aliquotted and stored frozen at -20°C for six months. Avoid repeated freeze-thaw cycles.
Host	Rabbit
Uniprot ID	P56537

### Technical Details

Immunogen	A synthetic peptide corresponding to a sequence in the middle region of human EIF6, different from the related rat and mouse sequences by one amino acid.
Predicted Reactive Species	Hamster
Recommended Detection Systems	Boster recommends Enhanced Chemiluminescent Kit with anti-Rabbit IgG (EK1002) for Western blot, and HRP Conjugated anti-Rabbit IgG Super Vision Assay Kit (SV0002-1) for IHC(P) and IHC(F).
Cross Reactivity	No cross-reactivity with other proteins
Isotype	Rabbit IgG
Form	Lyophilized

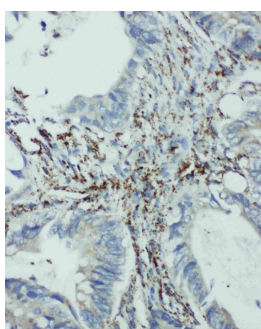
Concentration	Adding 0.2 ml of distilled water will yield a concentration of 500 ug/ml.
Purification	Immunogen affinity purified.
Suggested Dilutions	<p>Dilute the sample so that the expected range of concentrations fall within the detection range of this kit.</p> <p>If the expected range of concentration is unknown, a pilot test should be conducted to decide the optimal dilution ratio for your samples.</p> <p>Some PubMed article(s) citing the expression level of this target are as follows:</p> <p>Boster Bio's internal QC testing used:</p> <p>Immunohistochemistry (Paraffin-embedded Section), 0.5-1ug/ml, Human, Mouse, Rat, By Heat</p> <p>Immunohistochemistry (Frozen Section), 0.5-1ug/ml, Human, Mouse, Rat</p> <p>Western blot, 0.1-0.5ug/ml, Human, Mouse, Rat</p>

## Anti-integrin beta 4 binding protein/EIF6 Antibody (PA2031) Images



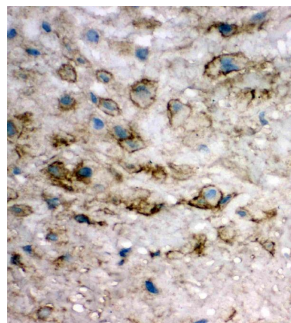
Anti-EIF6 antibody, PA2031, Western blotting

Lane 1: Rat Liver Tissue Lysate  
Lane 2: Rat Kidney Tissue Lysate  
Lane 3: COLO320 Cell Lysate  
Lane 4: SW620 Cell Lysate  
Lane 5: HELA Cell Lysate  
Lane 6: 293T Cell Lysate  
Lane 7: HEPA Cell Lysate



Anti-EIF6 antibody, PA2031, IHC(P)

IHC(P): Human Intestinal Cancer Tissue



Anti-EIF6 antibody, PA2031, IHC(F)

IHC(F): Human Placenta Tissue

## Submit a product review to Biocompare.com

Submit a review of this product to Biocompare.com to receive a \$20 Amazon.com giftcard! Your reviews help your fellow scientists make the right decisions. Thank you for your contribution.



Anti-integrin beta 4 binding protein/EIF6 Antibody